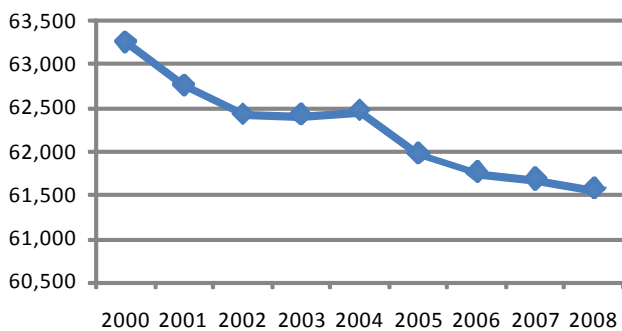


Population	2000 Census	2006 Estimate	2007 Estimate	Average Annual Rate of Change
Washington County	63,251	61,754	61,576	-0.40%
Belpre city	6,660	6,520	6,514	-0.31%
Beverly vil.	1,282	1,303	1,331	0.52%
Lowell vil.	628	596	596	-0.72%
Lower Salem vil.	109	103	103	-0.78%
Macksburg vil.	202	203	202	-0.07%
Marietta city	14,515	14,194	14,153	-0.49%
Matamoras vil.	957	916	912	-0.69%
The remaining of Washington County	38,898	37,919	37,765	-0.35%

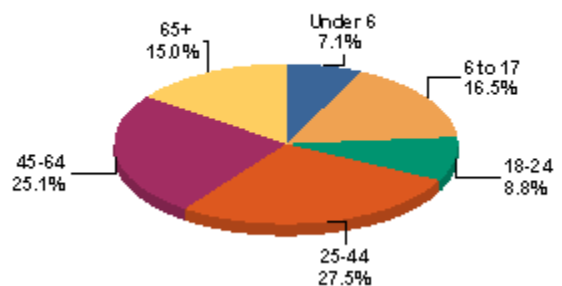
	2000 Census	2006 Estimate	2007 Estimate	Average Annual Rate of Change
Adams twp.	1,830	1,778	1,772	-0.47%
Aurelius twp.	441	438	436	-0.16%
Barlow twp.	2,417	2,364	2,355	-0.36%
Belpre twp.	4,192	4,106	4,090	-0.34%
Decatur twp.	1,181	1,162	1,156	-0.29%
Dunham twp.	2,505	2,466	2,455	-0.28%
Fairfield twp.	1,011	994	989	-0.30%
Fearing twp.	910	849	846	-0.35%
Grandview twp.	1,834	1,772	1,764	-0.54%
Independence twp.	387	381	379	-0.29%
Lawrence twp.	956	942	938	-0.35%
Liberty twp.	621	614	611	-0.22%
Ludlow twp.	330	323	322	-0.34%
Marietta twp.	4,673	4,583	4,562	-0.33%
Muskingum twp.	4,627	4,353	4,345	-0.53%
Newport twp.	2,176	2,128	2,119	-0.33%
Palmer twp.	625	616	612	-0.29%
Salem twp.	1,130	1,099	1,095	-0.43%
Warren twp.	4,044	3,969	3,952	-0.32%
Waterford twp.	3,708	3,675	3,692	-0.05%
Watertown twp.	1,563	1,526	1,521	-0.38%
Wesley twp.	915	902	898	-0.26%

	Total Population	Population Under 5	Population 5-13	Population 14-17			
1980 Census	64,266						
1990 Census	62,254	Not Available					
2000 Census	63,251	3,691	5.8%	7,557	11.9%	3,643	5.8%
2001 Estimate	62,755	3,563	5.7%	7,372	11.7%	3,571	5.7%
2002 Estimate	62,424	3,504	5.6%	7,295	11.7%	3,444	5.5%
2003 Estimate	62,411	3,500	5.6%	7,128	11.4%	3,429	5.5%
2004 Estimate	62,467	3,528	5.6%	6,976	11.2%	3,381	5.4%
2005 Estimate	61,971	3,424	5.5%	6,767	10.9%	3,366	5.4%
2006 Estimate	61,756	3,419	5.5%	6,658	10.8%	3,318	5.4%
2007 Estimate	61,682	3,371	5.5%	6,486	10.5%	3,289	5.3%
2008 Estimate	61,567	3,371	5.5%	6,336	10.3%	3,233	5.3%

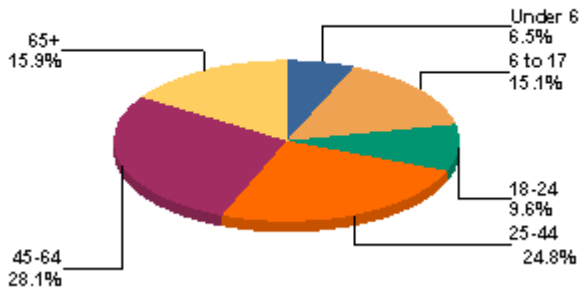
Estimated Total Population 1



2000 Population Percent by Age 2



2005 Population Estimates



Income and Employment Support 2007<sup>4</sup>

Washington County Ohio

Dependency Rate	22.9%	17.1%
Food Stamps	14.7%	14.7%
OWF cash assistance	0.6%	3.0%

Workforce Investment Act

Adult employment rate	100.0%	78.5%
Adult retention rate	100.0%	86.2%
Youth placement rate	75.0%	62.6%

Family Poverty and Employment<sup>15</sup>

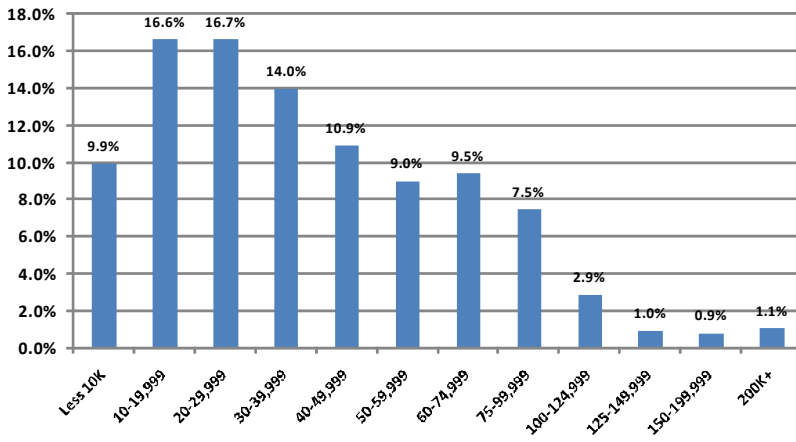
Poverty Status: Percent of total families in poverty (2000 Census)

Married Couples	39.3%
Male householder	8.3%
Female householder	52.3%

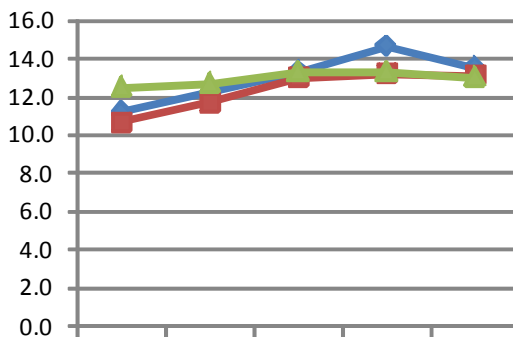
Family Type by Employment Status<sup>3</sup> (2000 Census)

Total Families	17,766	100%
Married couples, both in labor force	7,387	41.6%
Married couples, husband in labor force	3,265	18.4%
Married couples, wife in labor force	955	5.4%
Married couples not in labor force	2,942	16.6%
Male householder, in labor force	613	3.5%
Male householder not in labor force	197	1.1%
Female householder, in labor force	1,547	8.7%
Female householder not in labor force	860	4.8%

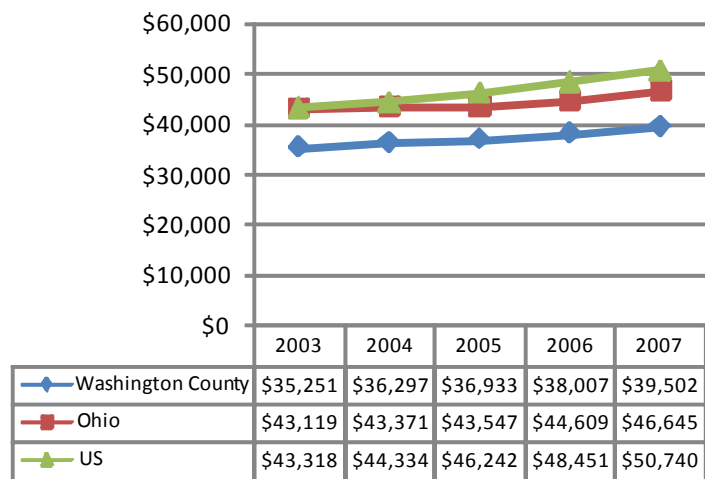
Percent of Population by Household Income<sup>3</sup> 2000 Census



Poverty Rate<sup>5</sup>



Median Household Income<sup>5</sup>



**Housing Units (2000 Census) <sup>6</sup>**

Total Housing Units	25,137
Owner occupied	69.0%
Renter occupied	21.5%
Vacant	9.4%
Median gross income as percentage of household income	23.7%
Median monthly owner's cost for housing with a mortgage as a percentage of household income	19.0%

<b>Educational Attainment <sup>7, 11</sup></b>	<b>Census 2000</b>	<b>2007 Estimate</b>	<b>2000 Census State</b>	<b>2000 Census National</b>
Population 25 years and over	100%	100.0%	100.0%	100.0%
No high school diploma	15.5%	12.5%	17.0%	19.6
High school graduate (includes equivalency)	43%	43.8%	36.1%	28.6%
Some college, no degree	19.30%	18.8%	19.9%	21.0%
Associate degree	7.10%	8.0%	5.9%	6.3%
Bachelor's degree	9.40%	11.0%	13.7%	15.5%
Graduate or professional degree	5.70%	5.9%	7.4%	8.9%

**Total Housing Units <sup>6</sup>**

<b>Cities and Townships</b>	<b>2000 Census</b>	<b>2005 Estimates</b>	<b>2006 Estimates</b>
<b>Washington Co</b>	<b>27,760</b>	<b>28,051</b>	<b>28,028</b>
Adams township	853	860	858
Aurelius township	196	203	202
Barlow township	965	982	980
Belpre city	3,283	3,331	3,334
Belpre township	1,702	1,734	1,730
Decatur township	523	535	534
Dunham township	1,001	1,025	1,023
Fairfield township	400	409	408
Fearing township	365	371	371
Grandview township	869	873	871
Independence township	171	175	175
Lawrence township	399	407	406
Liberty township	238	245	244
Ludlow township	166	169	169
Marietta city	6,819	6,766	6,755
Marietta township	2,003	2,043	2,038
Muskingum township	1,914	1,915	1,912
Newport township	922	941	939
Palmer township	233	239	238
Salem township	459	465	464
Warren township	1,565	1,597	1,594
Waterford township	1,709	1,742	1,760
Watertown township	595	604	603
Wesley township	410	420	420

**School Enrollment <sup>7, 11</sup>**

	<b>Census 2000</b>	<b>Census 2000</b>	<b>2007 Estimate</b>
Population 3 years and over enrolled in school	15,573	100%	100.0%
Nursery school, preschool	987	6%	4.0%
Kindergarten	829	5%	3.8%
Elementary school (grades 1-8)	6,839	44%	40.8%
High school (grades 9-12)	3,601	23%	24.5%
College or graduate school	3,317	21%	26.9%

**Kindergarten Readiness Assessment-Literacy Scores-Fall 2007**

<b>District Name</b>	<b>Count of Test Takers fall 2007</b>	<b>Average Score Fall 2007</b>	<b>Percent Band 1 (Scores 0-13)</b>	<b>Percent Band 2 (Scores 14-23)</b>	<b>Percent Band 3 (Scores 24-29)</b>
Belpre City SD	75	20.0	16.0	54.7	29.3
Fort Frye Local SD	52	18.9	21.2	51.9	26.9
Frontier Local SD	51	18.3	27.5	51.0	21.6
Marietta City SD	211	19.6	22.3	45.5	32.2
Warren Local SD	173	21.2	12.1	43.9	43.9
Wolf Creek Local SD	36	21.3	8.3	50.0	41.7
State	122,786	19.7	21.8	40.6	37.6

**Anemia Indicators Children Aged < 5 Years <sup>13</sup>**

	<b>Number</b>	<b>Percent</b>	<b>Rank</b>
Washington County	911	8.30	23

**Prevalence of Overweight and at Risk of Overweight Among Washington County Third Graders, 2004-5\* <sup>14</sup>**

	<b>Percent overweight and at risk of overweight</b>	<b>Percent overweight</b>
	33.6% (22.8-46.3)	19.6% (12.3-29.6)

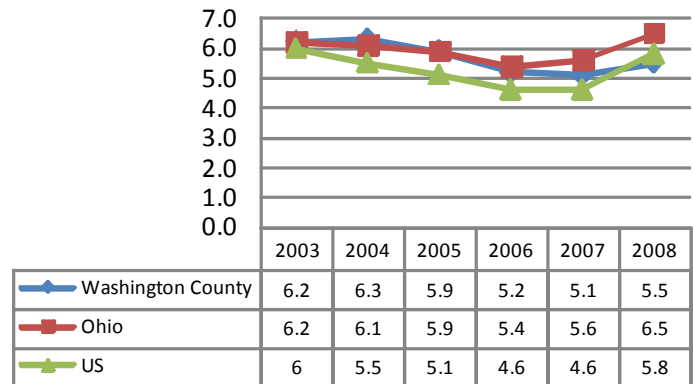
\* Confidence Interval 95 percent

**Childcare Services <sup>4</sup>**

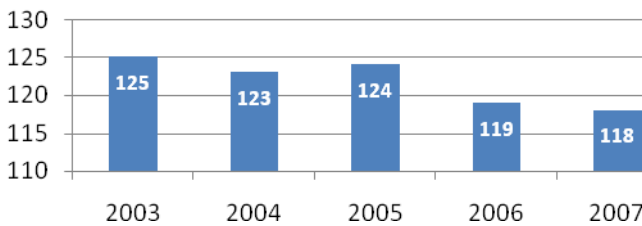
	<b>2006</b>	<b>2007</b>
Number of Children Using Publicly Funded Child Care (Unduplicated Count)	715	777
Public Funds Used for Child Care Expenditures	\$958,276	\$996,039
Annual Average Expenditures per Child	\$1,340	\$1,282
Children Enrolled in Early Learning Initiative Programs (ELI)	47	37
<b>Childcare Providers</b>		
Number of Licensed Child Care Centers	30	30

Major Employers by Industry <sup>3</sup>	
Marietta City Board of Education Warren Local Board of Education	Government
Eramet Marietta Inc KRATON Polymers LLC RJF International Corp Thermo Fisher Scientific Inc	Manufacturing
Marietta College Marietta Memorial Hospital	Service
Wal-Mart Stores Inc	Trade
American Electric Power Co	Utility

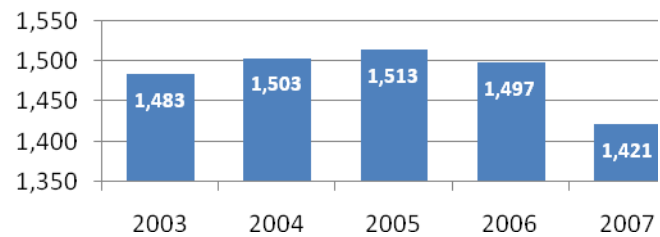
Unemployment Rate <sup>3, 10</sup>



Business starts <sup>3</sup>



Active businesses <sup>3</sup>

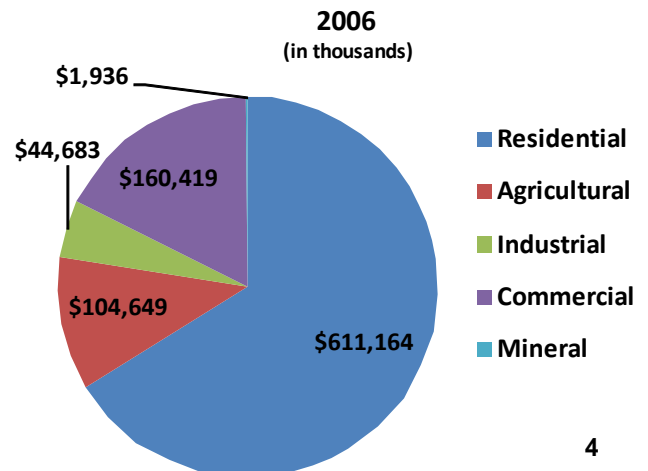


Commute Out To	Number	Percent	Commute In From	Number	Percent
Wood Co. WV	5,927	21.0%	Wood Co. WV	3,316	12.4%
Pleasants Co. WV	378	1.3%	Morgan Co. OH	501	1.9%
Monroe Co. OH	221	0.8%	Athens Co. OH	462	1.7%
Athens Co. OH	208	0.7%	Noble Co. OH	453	1.7%
Noble Co. OH	197	0.7%	Pleasants Co. WV	391	1.5%
Morgan Co. OH	125	0.4%	Meigs Co. OH	340	1.3%
Franklin Co. OH	124	0.4%	Monroe Co. OH	237	0.9%
Jackson Co. WV	95	0.3%	Ritchie Co. WV	137	0.5%
Guernsey Co. OH	83	0.3%	Franklin Co. OH	84	0.3%
Tyler Co. WV	71	0.3%	Tyler Co. WV	81	0.3%

Regional Commuting Patterns <sup>8</sup>

Number of workers living in county	28,171
Number of workers working in county	26,792
Net worker flow	-1379
Percent who commute out	29.2%
Average commute time in minutes	22.5

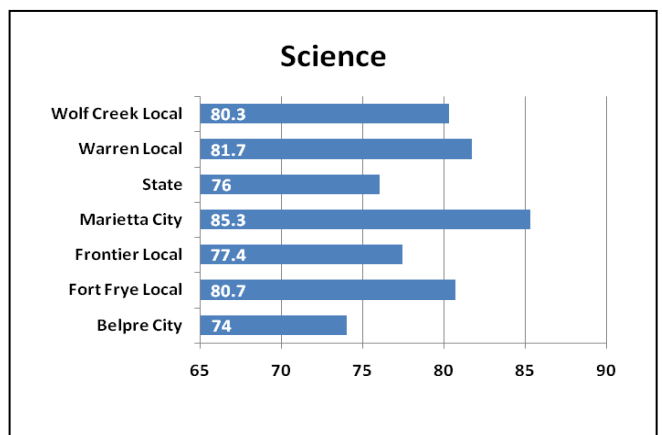
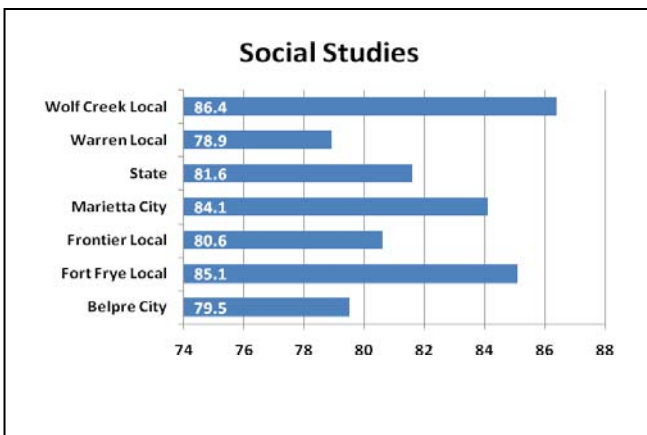
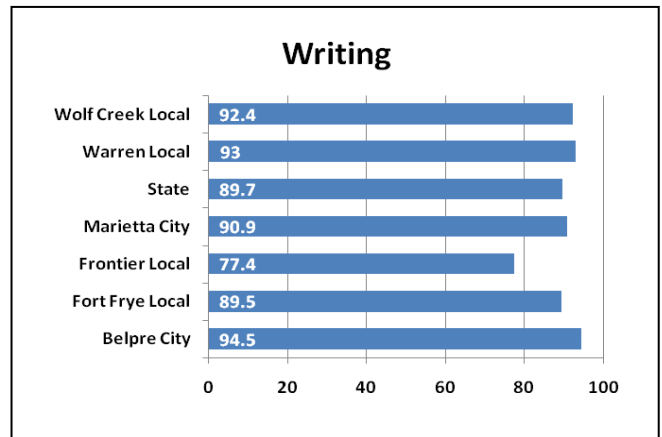
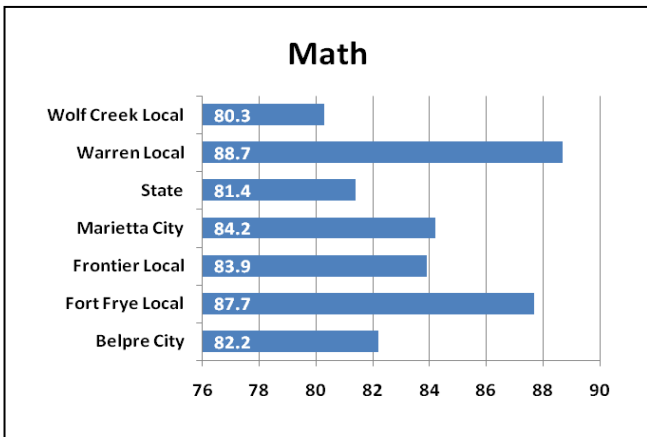
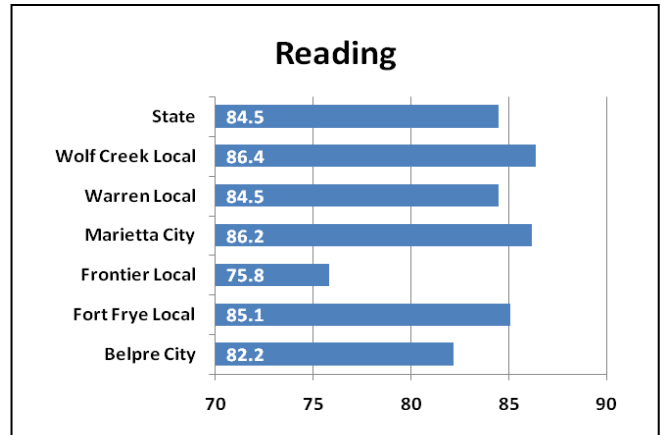
Value of Real Property <sup>3</sup>



Employment by Industry <sup>3</sup>

Industrial Sector	Number of Establishments		Average Employment	
	2006	Change since 2001	2006	Change since 2001
Private sector	1,502	-2.5%	21,632	2.0%
Goods-Producing	358	-2.2%	6,258	-11.7%
Natural Resources and Mining	60	3.4%	553	26.0%
Construction	198	-1.5%	1,485	-6.0%
Manufacturing	100	-6.5%	4,220	-16.8%
Service-Providing	1,144	-2.6%	15,375	8.9%
Trade, Transportation and Utilities	395	-6.0%	4,994	4.8%
Information	16	0.0%	129	-29.9%
Financial Services	139	3.0%	1,039	17.8%
Professional and Business Services	181	0.6%	1,984	40.0%
Education and Health Services	141	6.8%	4,342	14.2%
Leisure and Hospitality	136	13.3%	2,140	-5.2%
Other Services	135	-21.1%	746	-7.1%
Unclassified	2		2	
Federal Government			226	-5.4%
State Government			334	8.4%
Local Government			2,851	-0.5%

2008-09 Ohio Graduation Test (OGT) <sup>9</sup>  
District Ranking  
Percent of 10<sup>th</sup> Graders Proficient or Above



## Data Sources:

- <sup>1</sup> Annual Estimates of the Resident Population by Selected Age Groups and Sex for Counties: April 1, 2000 to July 1, 2008. U.S. Census Bureau. Accessed on May 29, 2009 from <http://www.census.gov/popest/counties/asrh/files/cc-est2008-agesex-39.csv>.
- <sup>2</sup> 2007 Population Estimates by County, City Village and Township. Office of Policy, Research and Strategic Planning, Ohio Department of Development, July 2008. Accessed on June 16, 2009 from <http://www.odod.state.oh.us/research/>.
- <sup>3</sup> 2007 Ohio County Profiles, Office of Policy, Research and Strategic Planning, Ohio Department of Development, January 2009. Accessed on June 12, 2009 from <http://www.odod.state.oh.us/research>.
- <sup>4</sup> Ohio County Profiles, Ohio Department of Job and Family Services, July 2008. Accessed on June 4, 2009 from <http://jfs.ohio.gov/county>.
- <sup>5</sup> 2007 Poverty and Median Income Estimates – Counties. Census Bureau, Small Area Estimates Branch, Release date: 12.2008. Accessed on March 24, 2009 from <http://www.census.gov/did/www/saipe/data/statecounty/data/2007.html>.
- <sup>6</sup> Estimated Housing Units for Ohio Places, County and County Subdivisions 2000-2006. Office of Policy, Research and Strategic Planning, Ohio Department of Development, September 2007. Accessed on May 26, 2009 from <http://www.odod.state.oh.us/research>.
- <sup>7</sup> 2007 Educational Attainment, School Enrollment. U.S. Census Bureau, 2005-2007 American Community Survey 3-Year Estimates. Accessed on February 26, 2009 from <http://factfinder.census.gov>.
- <sup>8</sup> Commuting Patterns by County, Office of Policy, Research and Strategic Planning, Ohio Department of Development. Accessed on June 17, 2009 from <http://www.odod.state.oh.us/research/files/P0005.htm>.
- <sup>9</sup> Ohio Department of Education, 2007-2008 School Year Report Card, August 2008. Accessed on May 24, 2009 from <http://webapp2.ode.state.oh.us/reportcard/archives/Default.asp>.
- <sup>10</sup> 2008 Civilian Labor Force Estimates with Unemployment Rate Map, Ohio Department of Job and Family Services, Office of Workforce Development, Bureau of Labor Market Information, March 12, 2009. Accessed on June 4, 2009 from <http://lmi.state.oh.us/laus/laus.html>.
- <sup>11</sup> 2000 Educational Attainment, School Enrollment. U.S. Census Bureau, Census 2000 Summary File 3 (SF 3). Accessed on February 26, 2009 from <http://factfinder.census.gov>.
- <sup>12</sup> Taxable Value of Real Property by Class of Property and County, Calendar Year 2007, Ohio Department of Taxation, Accessed on June 3, 2008 from [http://tax.ohio.gov/divisions/tax\\_analysis/tax\\_data\\_series/tangible\\_personal\\_property/pd31/pd31cy07.stm](http://tax.ohio.gov/divisions/tax_analysis/tax_data_series/tangible_personal_property/pd31/pd31cy07.stm).
- <sup>13</sup> Pediatric Nutrition Surveillance Data from WIC Participants in 2005, Ohio Department of Health, Accessed on May 22, 2009 from <http://www.odh.ohio.gov/ASSETS/4698F5F01183460DAE7A79CE5B9D98AB/2002cty.pdf>.
- <sup>14</sup> A Report on Body Mass Index of Ohio's Third Graders 2004-2005, Ohio Department of Health Division of Family and Community Health Services, Accessed on May 22, 2009 from <http://healthyohioprogam.org/ASSETS/7FBDB7A5C3FB4977A430A1EA46C642D9/bmirept.pdf>.
- <sup>15</sup> US Census 2000, Summary File 3, Poverty Status in 1999 of Families by Family Type by Presence and Age of Related Children <18 Years, Accessed on 8/3/09.
- <sup>16</sup> Aggregate Kindergarten Readiness Assessment-Literacy (KRA-L) Data for Fall 2007 District Scores by County, Accessed on 8/3/09 from <http://education.ohio.gov/GD/DocumentManagement/DocumentDownload.aspx?DocumentID=50667>.