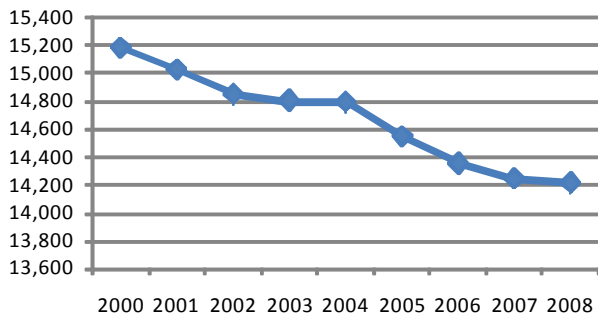


Population	2000 Census	2006 Estimate	2007 Estimate	Average Annual Rate of Change
Monroe County	15,180	14,368	14,258	-0.90%
Antioch vil.	89	86	85	-0.63%
Beallsville vil.	423	412	409	-0.46%
Clarington vil.	444	433	429	-0.47%
Graysville vil.	113	110	109	-0.50%
Jerusalem vil.	152	148	147	-0.46%
Lewisville vil.	233	226	224	-0.54%
Miltonsburg vil.	29	28	28	-0.48%
Stafford vil.	86	83	83	-0.49%
Wilson vil.	81	79	78	-0.52%
Woodsfield vil.	2,598	2,446	2,429	-0.92%
The remaining of Monroe	10,932	10,317	10,237	-0.90%

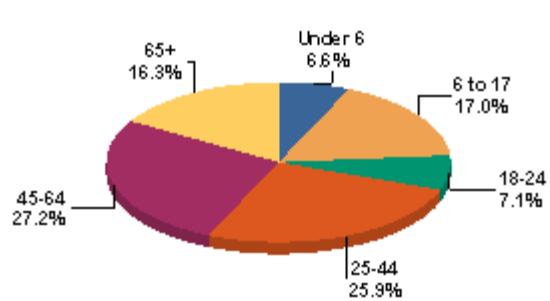
	2000 Census	2006 Estimate	2007 Estimate	Average Annual Rate of Change
Adams twp.	672	634	630	-0.89%
Benton twp.	349	331	328	-0.85%
Bethel twp.	357	337	334	-0.91%
Center twp.	3,797	3,580	3,554	-0.91%
Franklin twp.	453	430	427	-0.81%
Green twp.	422	400	397	-0.84%
Jackson twp.	473	447	444	-0.87%
Lee twp.	1,122	1,056	1,048	-0.94%
Malaga twp.	979	927	920	-0.85%
Ohio twp.	1,032	968	961	-0.98%
Perry twp.	455	432	429	-0.81%
Salem twp.	1,046	1,001	992	-0.73%
Seneca twp.	508	480	476	-0.89%
Summit twp.	714	679	673	-0.81%
Sunsbury twp.	1,424	1,363	1,353	-0.70%
Switzerland twp.	509	480	476	-0.92%
Washington twp.	520	494	490	-0.82%
Wayne twp.	348	329	326	-0.90%

	Total Population	Population Under 5	Population 5-13	Population 14-17
1980 Census	17,382	Not Available		
1990 Census	15,497	Not Available		
2000 Census	15,180	804 5.3%	1,856 12.2%	921 6.1%
2001 Estimate	15,027	808 5.4%	1,782 11.9%	880 5.9%
2002 Estimate	14,849	785 5.3%	1,709 11.5%	874 5.9%
2003 Estimate	14,806	770 5.2%	1,657 11.2%	855 5.8%
2004 Estimate	14,794	783 5.3%	1,577 10.7%	865 5.8%
2005 Estimate	14,551	770 5.3%	1,510 10.4%	847 5.8%
2006 Estimate	14,359	734 5.1%	1,482 10.3%	811 5.6%
2007 Estimate	14,250	726 5.1%	1,418 10.0%	795 5.6%
2008 Estimate	14,221	734 5.2%	1,391 9.8%	727 5.1%

Estimated Total Population <sup>1</sup>

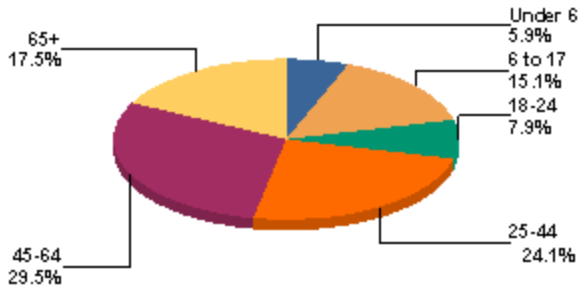


2000 Population Percent by Age <sup>2</sup>

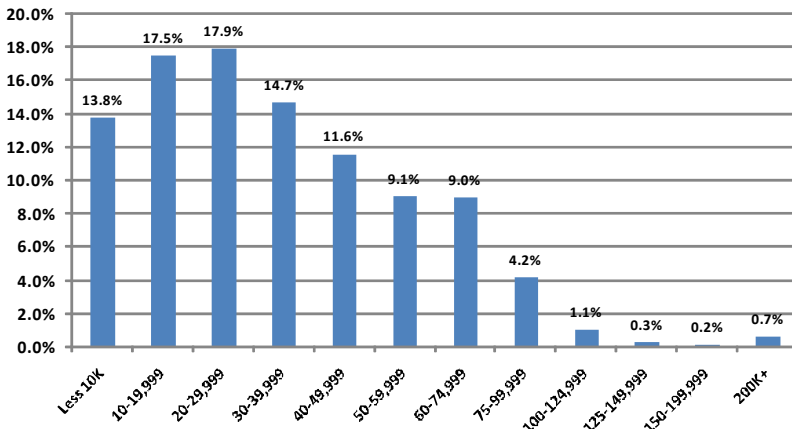


July 2009

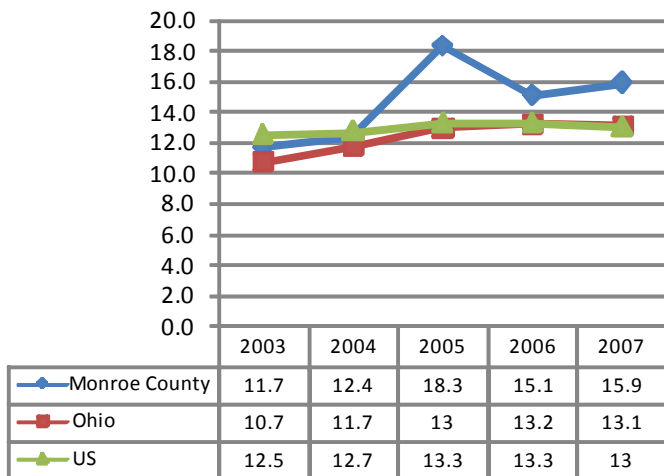
2005 Population Estimates <sup>3</sup>



Percent of Population by Household Income <sup>3</sup>  
2000 Census



Poverty Rate <sup>5</sup>



Income and Employment Support 2007 <sup>4</sup>

	Monroe County	Ohio
Dependency Rate	27.1%	17.1%
Food Stamps	16.9%	14.7%
OWF cash assistance	2.7%	3.0%

Workforce Investment Act

Adult employment rate	100.0%	78.5%
Adult retention rate	100.0%	86.2%
Youth placement rate	0.0%	62.6%

Family Poverty and Employment <sup>15</sup>

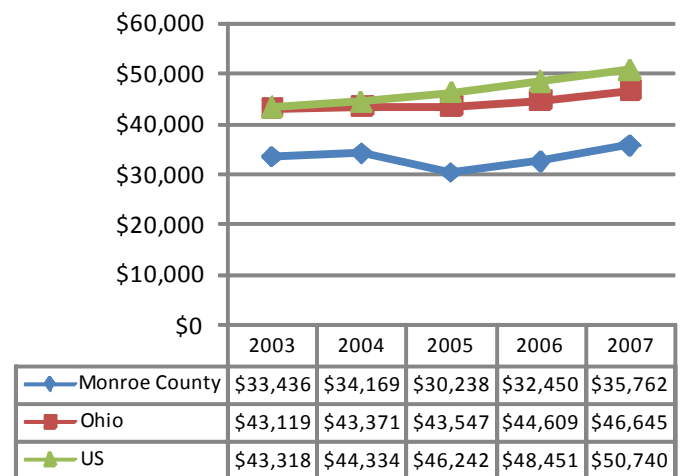
Poverty Status: Percent of total families in poverty (2000 Census)

Married Couples	57.1%
Male householder	7.0%
Female householder	35.9%

Family Type by Employment Status <sup>3</sup>  
(2000 Census)

Total Families	4,421	100%
Married couples, both in labor force	1,448	32.8%
Married couples, husband in labor force	941	21.3%
Married couples, wife in labor force	311	7.0%
Married couples not in labor force	1,055	23.9%
Male householder, in labor force	123	2.8%
Male householder not in labor force	57	1.3%
Female householder, in labor force	261	5.9%
Female householder not in labor force	225	5.1%

Median Household Income <sup>5</sup>



**Housing Units (2000 Census) <sup>6</sup>**

Total Housing Units	6,021
Owner occupied	67.4%
Renter occupied	16.1%
Vacant	16.5%
Median gross income as percentage of household income	24.7%
Median monthly owner's cost for housing with a mortgage as a percentage of household income	18.9%

Educational Attainment <sup>7, 11</sup>	2000 Census	2007 Estimate	2000 Census State	2000 Census National
Population 25 years and over	10,544	100%	100%	100%
No High school diploma	2,236	21.2%	17.0%	19.6%
High school graduate (includes equivalency)	5,277	50%	36.1%	28.6%
Some college, no degree	1,577	15%	19.9%	21.0%
Associate degree	568	5.4%	5.9%	6.3%
Bachelor's degree	618	5.9%	13.7%	15.5%
Graduate or professional degree	268	2.5%	7.4%	8.9%

**Total Housing Units <sup>6</sup>**

Cities and Townships	2000 Census	2005 Estimate	2006 Estimate
<b>Monroe Co</b>	<b>7,212</b>	<b>7,266</b>	<b>7,246</b>
Adams township	310	311	311
Benton township	191	193	192
Bethel township	194	195	195
Center township	1,782	1,785	1,780
Franklin township	236	239	238
Green township	206	208	207
Jackson township	252	254	253
Lee township	546	548	546
Malaga township	385	388	387
Ohio township	482	481	480
Perry township	283	286	286
Salem township	488	498	496
Seneca township	198	199	199
Summit township	336	340	339
Sunsbury township	596	608	607
Switzerland township	229	230	229
Washington township	313	316	315
Wayne township	185	187	186

School Enrollment <sup>7, 11</sup>	2000 Census	2007 Estimate
Population 3 years and over enrolled in school	3,438	n/a
Nursery school, preschool	167	n/a
Kindergarten	171	n/a
Elementary school (grades 1-8)	1,697	n/a
High school (grades 9-12)	910	n/a
College or graduate school	493	n/a

**Kindergarten Readiness Assessment-Literacy Scores-Fall 2007**

District Name	Count of Test Takers fall 2007	Average Score Fall 2007	Percent Band 1 (Scores 0-13)	Percent Band 2 (Scores 14-23)	Percent Band 3 (Scores 24-29)
Switzerland of Ohio Local SD	171	19.3	23.4	44.4	32.2
State	122,786	19.7	21.8	40.6	37.6

**Anemia Indicators Children Aged < 5 Years <sup>13</sup>**

	Number	Percent	Rank
Monroe County	382	22.00	86

**Prevalence of Overweight and at Risk of Overweight Among Monroe County Third Graders, 2004-5\* <sup>14</sup>**

Percent overweight and at risk of overweight	Percent overweight
44.9% (40.8-49.0)	14.8% (10.9-19.8)

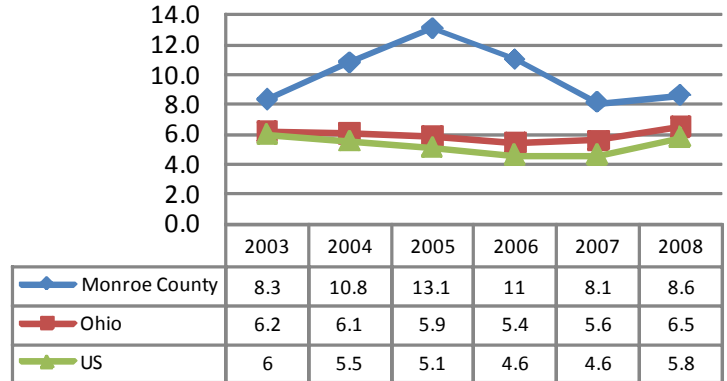
\* Confidence Interval 95 percent

**Childcare Services <sup>4</sup>**

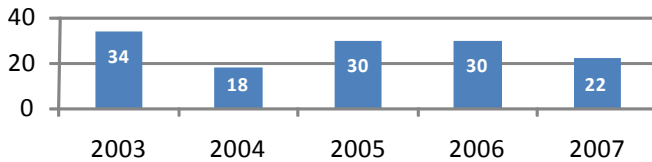
	2006	2007
Number of Children Using Publicly Funded Child Care (Unduplicated Count)	164	119
Public Funds Used for Child Care Expenditures	\$329,085	\$201,851
Annual Average Expenditures per Child	\$2,007	\$1,696
Children Enrolled in Early Learning Initiative Programs (ELI)	19	19
<b>Childcare Providers</b>		
Number of Licensed Child Care Centers	4	4

Major Employers by Industry <sup>3</sup>	
Monroe County Government Switzerland of Ohio Local Board of Education	Government
Ormet Corp	Manufacturing
Extencicare/Woodsfield Nursing Center Safe Auto Insurance Group	Service
Riesbeck Food Markets	Trade
Slay Transportation Co Inc	Transportation

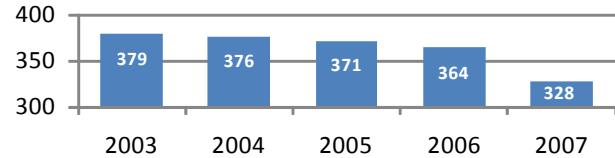
Unemployment Rate <sup>3, 10</sup>



Number of Business starts <sup>3</sup>



Number of Active Businesses <sup>3</sup>

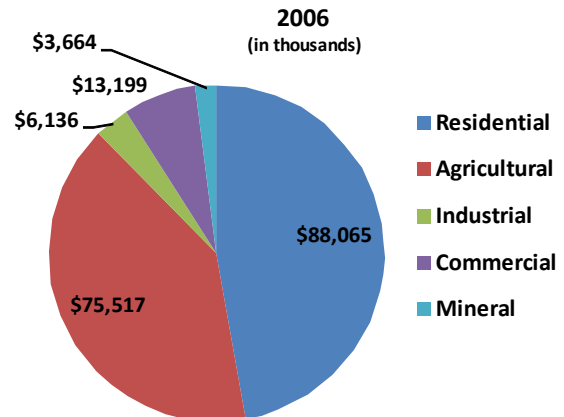


Commute Out To	Number	Percent	Commute In From	Number	Percent
Belmont Co. OH	596	10.3%	Belmont Co. OH	626	11.7%
Wetzel Co. WV	532	9.2%	Wetzel Co. WV	447	8.4%
Washington Co. OH	237	4.1%	Washington Co. OH	221	4.1%
Marshall Co. WV	145	2.5%	Marshall Co. WV	122	2.3%
Noble Co. OH	132	2.3%	Tyler Co. WV	102	1.9%
Ohio Co. WV	111	1.9%	Noble Co. OH	67	1.3%
Guernsey Co. OH	84	1.5%	Ohio Co. WV	36	0.7%
Tyler Co. WV	57	1.0%	Lucas Co. OH	33	0.6%
Wood Co. WV	46	0.8%	Franklin Co. OH	28	0.5%
Franklin Co. OH	29	0.5%	Montgomery Co. OH	15	0.3%

Regional Commuting Patterns <sup>8</sup>

Number of workers living in county	5,768
Number of workers working in county	5,346
Net worker flow	-422
Percent who commute out	38.5%
Average commute time in minutes	30.8

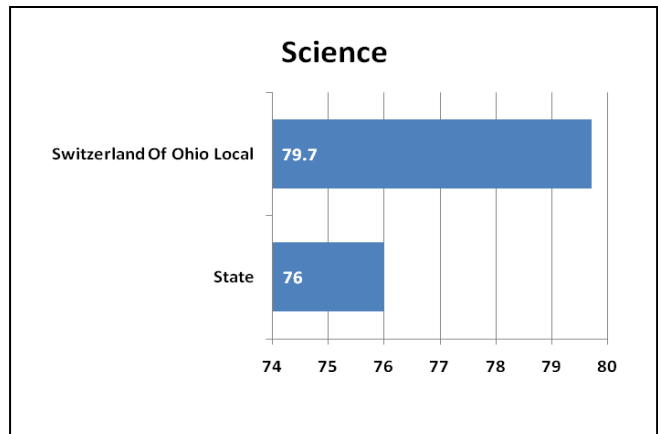
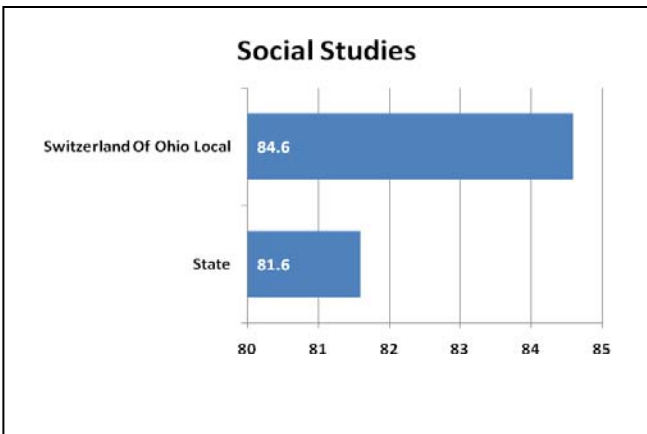
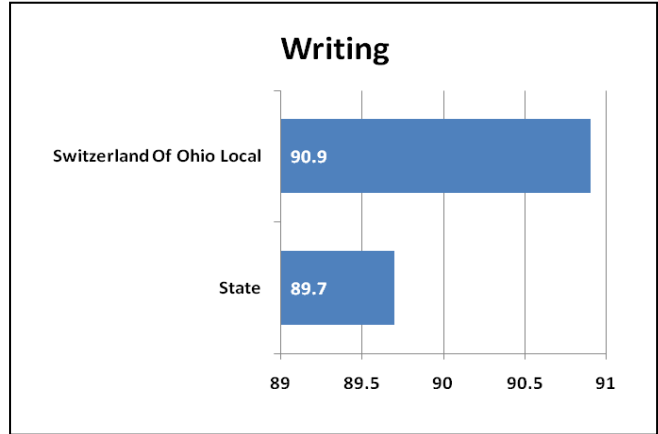
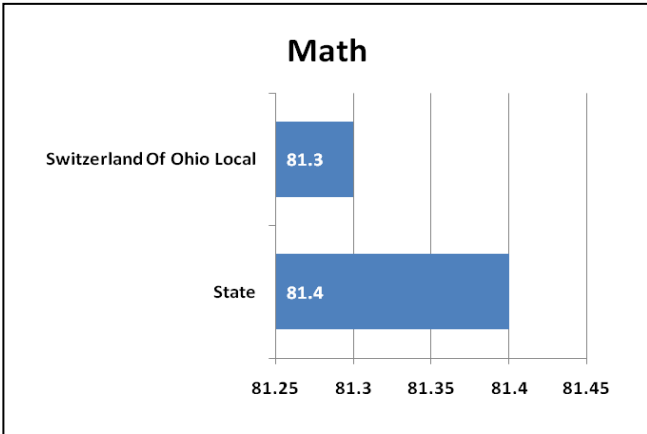
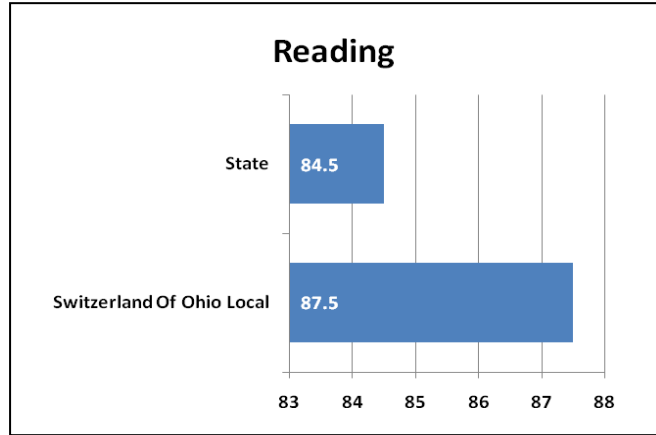
Taxable Value of Real Property <sup>3</sup>



Employment by Industry <sup>3</sup>

Industrial Sector	Number of Establishments		Average Employment	
	2006	Change since 2001	2006	Change since 2001
Private sector	284	-3.7%	2,151	-39.8%
Goods-Producing	88	-5.4%	535	-76.5%
Natural Resources and Mining	19	0.0%	70	11.1%
Construction	51	-8.9%	166	-2.4%
Manufacturing	19	5.6%	299	-85.4%
Service-Providing	196	-3.0%	1,616	25.1%
Trade, Transportation and Utilities	75	-3.8%	548	15%
Information				
Financial Services	17	-19.0%	425	224.4%
Professional and Business Services	27	-3.6%	203	150.6%
Education and Health Services	17	21.4%	188	-7.4%
Leisure and Hospitality	29	7.4%	129	-26.7%
Other Services	28	-3.4%	97	-23.0%
Unclassified				
Federal Government			54	-11.5%
State Government			34	-5.6%
Local Government			781	-7.5%

2008-09 Ohio Graduation Test (OGT) <sup>9</sup>  
 District Ranking  
 Percent of 10<sup>th</sup> Graders Proficient or Above



## Data Sources:

- <sup>1</sup> Annual Estimates of the Resident Population by Selected Age Groups and Sex for Counties: April 1, 2000 to July 1, 2008. U.S. Census Bureau. Accessed on May 29, 2009 from <http://www.census.gov/popest/counties/asrh/files/cc-est2008-agesex-39.csv>.
- <sup>2</sup> 2007 Population Estimates by County, City Village and Township. Office of Policy, Research and Strategic Planning, Ohio Department of Development, July 2008. Accessed on June 16, 2009 from <http://www.odod.state.oh.us/research/>.
- <sup>3</sup> 2007 Ohio County Profiles, Office of Policy, Research and Strategic Planning, Ohio Department of Development, January 2009. Accessed on June 12, 2009 from <http://www.odod.state.oh.us/research>.
- <sup>4</sup> Ohio County Profiles, Ohio Department of Job and Family Services, July 2008. Accessed on June 4, 2009 from <http://jfs.ohio.gov/county>.
- <sup>5</sup> 2007 Poverty and Median Income Estimates – Counties. Census Bureau, Small Area Estimates Branch, Release date: 12.2008. Accessed on March 24, 2009 from <http://www.census.gov/did/www/saipe/data/statecounty/data/2007.html>.
- <sup>6</sup> Estimated Housing Units for Ohio Places, County and County Subdivisions 2000-2006. Office of Policy, Research and Strategic Planning, Ohio Department of Development, September 2007. Accessed on May 26, 2009 from <http://www.odod.state.oh.us/research>.
- <sup>7</sup> 2007 Educational Attainment, School Enrollment. U.S. Census Bureau, 2005-2007 American Community Survey 3-Year Estimates. Accessed on February 26, 2009 from <http://factfinder.census.gov>.
- <sup>8</sup> Commuting Patterns by County, Office of Policy, Research and Strategic Planning, Ohio Department of Development. Accessed on June 17, 2009 from <http://www.odod.state.oh.us/research/files/P0005.htm>.
- <sup>9</sup> Ohio Department of Education, 2007-2008 School Year Report Card, August 2008. Accessed on May 24, 2009 from <http://webapp2.ode.state.oh.us/reportcard/archives/Default.asp>.
- <sup>10</sup> 2008 Civilian Labor Force Estimates with Unemployment Rate Map, Ohio Department of Job and Family Services, Office of Workforce Development, Bureau of Labor Market Information, March 12, 2009. Accessed on June 4, 2009 from <http://lmi.state.oh.us/laus/laus.html>.
- <sup>11</sup> 2000 Educational Attainment, School Enrollment. U.S. Census Bureau, Census 2000 Summary File 3 (SF 3). Accessed on February 26, 2009 from <http://factfinder.census.gov>.
- <sup>12</sup> Taxable Value of Real Property by Class of Property and County, Calendar Year 2007, Ohio Department of Taxation, Accessed on June 3, 2008 from [http://tax.ohio.gov/divisions/tax\\_analysis/tax\\_data\\_series/tangible\\_personal\\_property/pd31/pd31cy07.stm](http://tax.ohio.gov/divisions/tax_analysis/tax_data_series/tangible_personal_property/pd31/pd31cy07.stm).
- <sup>13</sup> Pediatric Nutrition Surveillance Data from WIC Participants in 2005, Ohio Department of Health, Accessed on May 22, 2009 from <http://www.odh.ohio.gov/ASSETS/4698F5F01183460DAE7A79CE5B9D98AB/2002cty.pdf>.
- <sup>14</sup> A Report on Body Mass Index of Ohio's Third Graders 2004-2005, Ohio Department of Health Division of Family and Community Health Services, Accessed on May 22, 2009 from <http://healthyohioprogam.org/ASSETS/7FBDB7A5C3FB4977A430A1EA46C642D9/bmirept.pdf>.
- <sup>15</sup> US Census 2000, Summary File 3, Poverty Status in 1999 of Families by Family Type by Presence and Age of Related Children <18 Years, Accessed on 8/3/09.
- <sup>16</sup> Aggregate Kindergarten Readiness Assessment-Literacy (KRA-L) Data for Fall 2007 District Scores by County, Accessed on 8/3/09 from <http://education.ohio.gov/GD/DocumentManagement/DocumentDownload.aspx?DocumentID=50667>.