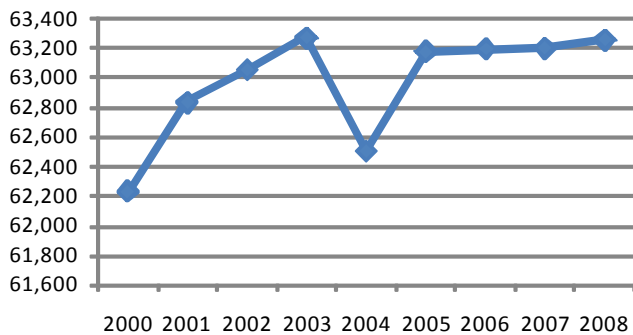


Population	2000 Census	2006 Estimate	2007 Estimate	Average Annual Rate of Change
Athens County	62,223	63,237	63,275	0.20%
Albany vil.	808	823	833	0.42%
Amesville vil.	184	190	190	0.44%
Athens city	21,342	21,871	21,909	0.36%
Buchtel vil.	563	591	589	0.62%
Chauncey vil.	1,067	1,111	1,108	0.52%
Coolville vil.	528	549	547	0.49%
Glouster vil.	1,972	2,038	2,034	0.43%
Jacksonville vil.	544	565	563	0.47%
Nelsonville city	5,230	5,409	5,400	0.44%
Trimble vil.	466	484	483	0.50%
The remaining of Athens	29,519	29,606	29,619	0.05%

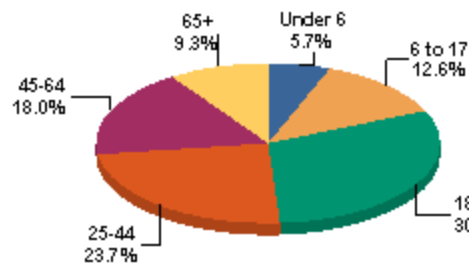
	2000 Census	2006 Estimate	2007 Estimate	Average Annual Rate of Change
Alexander twp.	2,614	2,625	2,627	0.07%
Ames twp.	1,231	1,233	1,238	0.08%
Athens twp.	27,714	28,226	28,254	0.27%
Bern twp.	519	524	526	0.18%
Canaan twp.	1,780	1,798	1,804	0.18%
Carthage twp.	1,467	1,480	1,483	0.15%
Dover twp.	3,797	3,846	3,843	0.17%
Lee twp.	2,531	2,552	2,563	0.17%
Lodi twp.	1,403	1,406	1,410	0.07%
Rome twp.	1,400	1,403	1,405	0.05%
Trimble twp.	4,710	4,820	4,813	0.30%
Troy twp.	2,712	2,750	2,746	0.17%
Waterloo twp.	2,605	2,619	2,619	0.07%
York twp.	7,740	7,955	7,944	0.36%

	Total Population	Population Under 5	Population 5-13	Population 14-17			
1980 Census	56,399						
1990 Census	59,549	Not Available					
2000 Census	62,223	2,972	4.8%	5,652	9.1%	2,787	4.5%
2001 Estimate	62,832	3,017	4.8%	5,499	8.8%	2,669	4.2%
2002 Estimate	63,052	3,059	4.9%	5,423	8.6%	2,622	4.2%
2003 Estimate	63,270	3,091	4.9%	5,391	8.5%	2,553	4.0%
2004 Estimate	62,499	3,100	5.0%	5,385	8.6%	2,481	4.0%
2005 Estimate	63,175	3,084	4.9%	5,278	8.4%	2,456	3.9%
2006 Estimate	63,193	2,994	4.7%	5,259	8.3%	2,440	3.9%
2007 Estimate	63,200	2,921	4.6%	5,202	8.2%	2,445	3.9%
2008 Estimate	63,255	2,930	4.6%	5,187	8.2%	2,407	3.8%

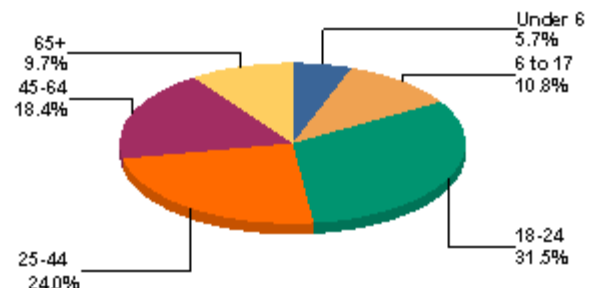
Estimated Total Population 1



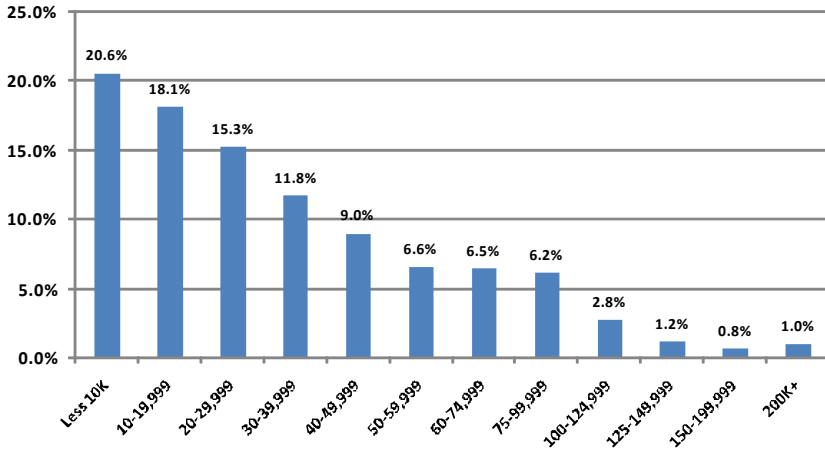
2000 Population Percent by Age 2



2005 Population Estimates



Percent of Population by Household Income 3  
2000 Census



**Income and Employment Support 2007<sup>4</sup>**  
Athens County Ohio

Dependency Rate	22.8%	17.1%
Food Stamps	17.7%	14.7%
OWF cash assistance	5.1%	3.0%

**Workforce Investment Act**

Adult employment rate	67.9%	78.5%
Adult retention rate	81.0%	86.2%
Youth placement rate	77.4%	62.6%

**Family Poverty and Employment<sup>15</sup>**

Employment Status: Percent of total families in poverty (2000 Census)

Married Couples	48.1%
Male householder	12.7%
Female householder	39.2%

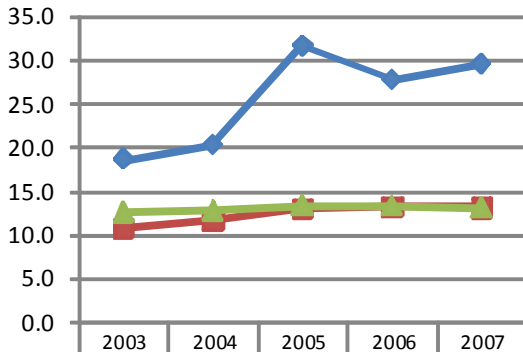
Family Type by Employment Status (2000 Census)<sup>3</sup>

Total Families	12,721	100%
Married couples, both in labor force	4,888	38.4%
Married couples, husband in labor force	2,241	17.6%
Married couples, wife in labor force	945	7.4%
Married couples not in labor force	1,986	15.6%
Male householder, in labor force	507	4.0%
Male householder not in labor force	278	2.2%
Female householder, in labor force	1,174	9.2%
Female householder not in labor force	702	5.5%

**Kindergarten Readiness Assessment-Literacy Scores-Fall 2007**

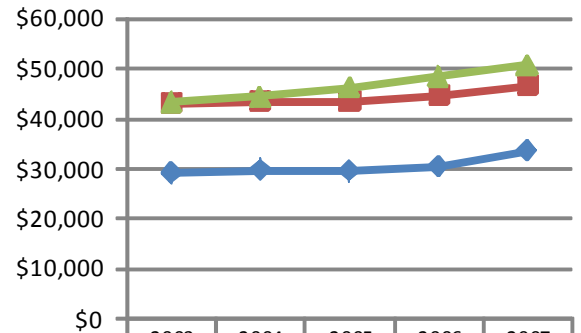
District Name	Count of Test Takers fall 2007	Average Score Fall 2007	Percent Band 1 (Scores 0-13)	Percent Band 2 (Scores 14-23)	Percent Band 3 (Scores 24-29)
Alexander Local SD	138	19.4	22.5	47.1	30.4
Athens City SD	236	19.7	24.6	33.9	41.5
Federal Hocking Local SD	72	18.7	20.8	48.6	30.6
Nelsonville-York City SD	80	16.6	37.5	41.3	21.3
Trimble Local SD	65	17.7	35.4	36.9	27.7
State	122,786	19.7	21.8	40.6	37.6

Poverty Rate<sup>5</sup>



Athens County	18.5	20.2	31.5	27.6	29.4
Ohio	10.7	11.7	13	13.2	13.1
US	12.5	12.7	13.3	13.3	13

Median Household Income<sup>5</sup>



Athens County	\$29,230	\$29,785	\$29,614	\$30,436	\$33,556
Ohio	\$43,119	\$43,371	\$43,547	\$44,609	\$46,645
US	\$43,318	\$44,334	\$46,242	\$48,451	\$50,740

July 2009

Housing Units (2000 Census) <sup>6</sup>

Total Housing Units	22,501
Owner occupied	54.6%
Renter occupied	35.8%
Vacant	9.6%
Median gross income as percentage of household income	36.5%
Median monthly owner's cost for housing with a mortgage as a percentage of household income	20.2%

Total Housing Units <sup>6</sup>

Cities and Townships with Villages	2000 Census	2005 Census	2006 Estimate
<b>Athens Co</b>	<b>24,901</b>	<b>25,229</b>	<b>25,196</b>
Alexander township	1,153	1,159	1,157
Ames township	545	547	546
Athens township	9,601	9,670	9,669
Bern township	285	288	287
Canaan township	790	799	798
Carthage township	589	595	594
Dover township	1,724	1,749	1,745
Lee township	1,140	1,150	1,149
Lodi township	613	615	614
Rome township	611	613	612
Trimble township	2,105	2,160	2,154
Troy township	1,245	1,264	1,261
Waterloo township	1,120	1,127	1,125
York township	3,380	3,493	3,485

Anemia Indicators Children Aged < 5 Years <sup>13</sup>

	Number	Percent	Rank
Athens County	1,270	10.90	47

Prevalence of Overweight and at Risk of Overweight Among Athens County Third Graders, 2004-5\* <sup>14</sup>

36.7%	(29.8–44.3)	23.5%	(18.2–29.7)
-------	-------------	-------	-------------

\* Confidence Interval 95 percent

Educational Attainment <sup>7, 11</sup>	2000 Census Percent	2007 Estimates	2000 Census State	2000 Census National
Population 25 years and over	100.0%	100.0%	100.0%	100.0%
Less than 9th grade	4.3%	4.6%	4.5%	7.5%
9th to 12th grade	12.8%	11.6%	12.6%	12.1%
High school or equivalent	34.2%	33.9%	36.1%	28.6%
Some college, no degree	16.5%	15.0%	19.9%	21.0%
Associate degree	6.5%	8.6%	5.9%	6.3%
Bachelor's degree	12.6%	12.3%	13.7%	15.5%
Graduate or professional degree	13.1%	14.0%	7.4%	8.9%

School Enrollment <sup>7, 11</sup>	2000 Census	2007 Estimate
Population 3 years and over enrolled in school	29,043	28,058
Nursery school, preschool	739	728
Kindergarten	577	529
Elementary school (grades 1-8)	4,514	5,226
High school (grades 9-12)	2,669	2,780
College or graduate school	20,544	18,795

Childcare Services <sup>4</sup>

	2006	2007
Number of Children Using Publicly Funded Child Care (Unduplicated Count)	509	565
Public Funds Used for Child Care Expenditures	\$924,444	\$1,033,860
Annual Average Expenditures per Child	\$1,816	\$1,830
Children Enrolled in Early Learning Initiative Programs (ELI)	68	54

## Childcare Providers

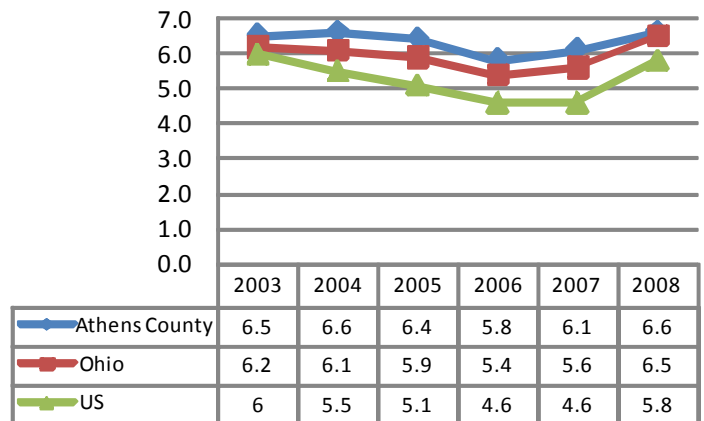
Number of Licensed Child Care Centers	14	15
---------------------------------------	----	----

# Athens County

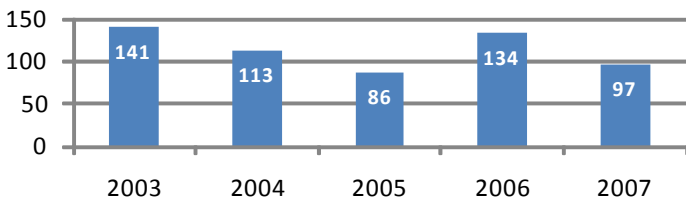
## Major Employers by Industry <sup>3</sup>

Alexander Local Board of Education	Government
Athens City Board of Education	
Athens County Government	
Federal Hocking Local Board of Education	
Hocking College	
Nelsonville-York City Board of Education	
Ohio University	
Diagnostic Hybrids Inc	Manufacturing
ED MAP Inc	Service
O'Bleness Memorial Hospital	
Wal-Mart Stores Inc	Trade

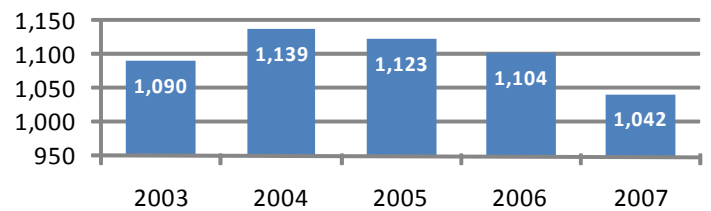
## Unemployment Rate <sup>3, 10</sup>



## Number of Business starts <sup>3</sup>



## Number of Active Businesses <sup>3</sup>

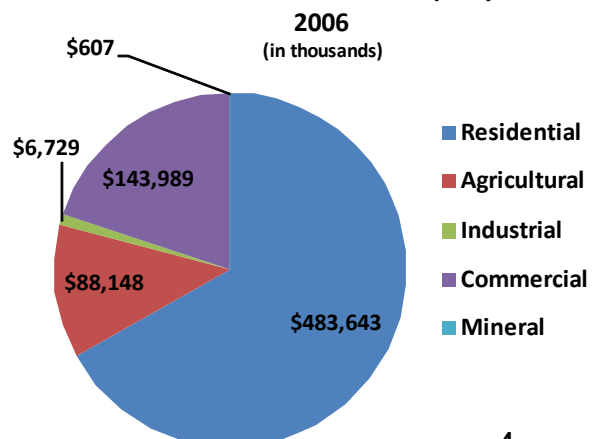


Commute Out To	Number	Percent	Commute In From	Number	Percent
Franklin Co. OH	712	2.8%	Meigs Co. OH	1,334	5.1%
Hocking Co. OH	580	2.3%	Hocking Co. OH	945	3.6%
Wood Co. WV	563	2.2%	Vinton Co. OH	420	1.6%
Washington Co. OH	462	1.8%	Morgan Co. OH	380	1.5%
Fairfield Co. OH	431	1.7%	Jackson Co. OH	220	0.8%
Vinton Co. OH	149	0.6%	Washington Co. OH	208	0.8%
Meigs Co. OH	142	0.6%	Gallia Co. OH	165	0.6%
Jackson Co. OH	130	0.5%	Fairfield Co. OH	142	0.5%
Perry Co. OH	123	0.5%	Wood Co. WV	116	0.4%

## Regional Commuting Patterns <sup>8</sup>

Number of workers living in county	25,586
Number of workers working in county	26,145
Net worker flow	559
Percent who commute out	16.8%
Average commute time in minutes	21.7

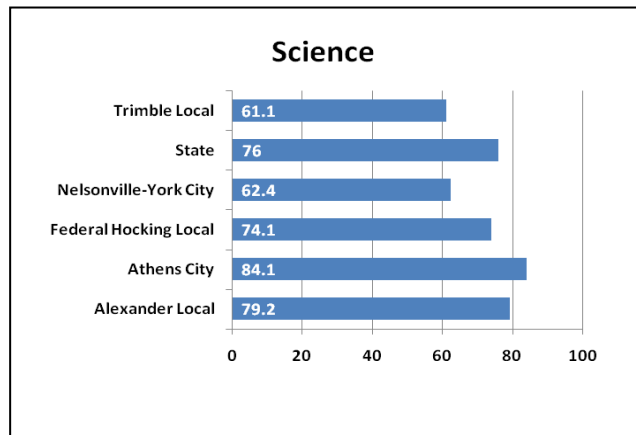
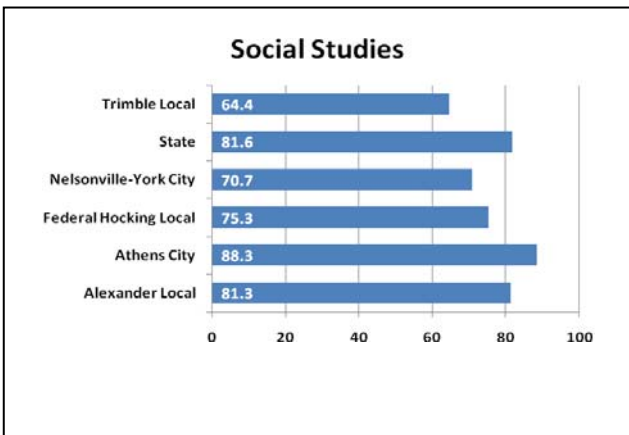
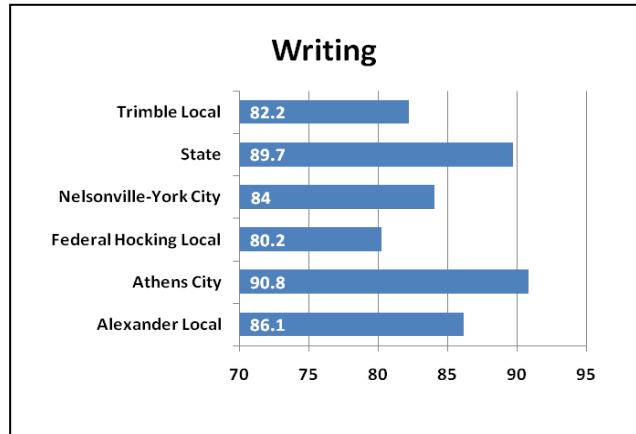
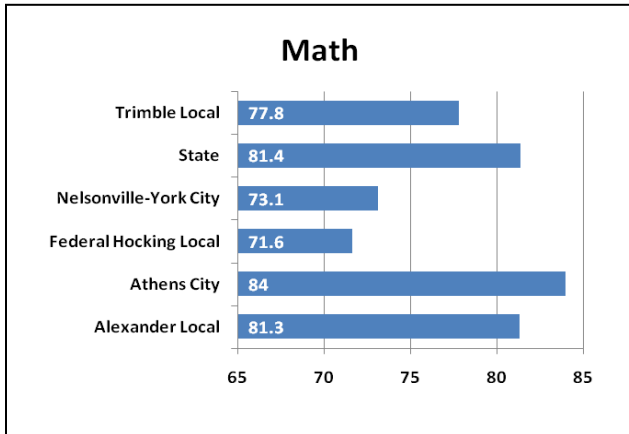
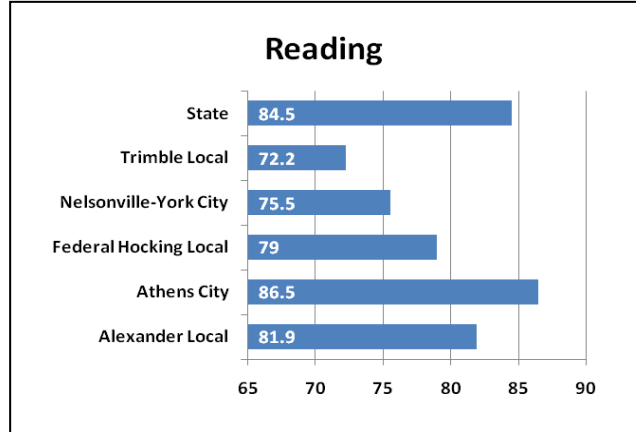
## Taxable Value of Real Property <sup>3</sup>



Employment by Industry <sup>3</sup>

Industrial Sector	Number of Establishments		Average Employment	
	2006	Change since 2001	2006	Change since 2001
Private sector	1,099	15%	12,771	8.0%
Goods-Producing	172	-1.1%	1,160	-25.6%
Natural Resources and Mining	7	-36.4%	150	94.8%
Construction	119	-0.8%	452	-8.7%
Manufacturing	45	4.7%	558	-43.5%
Service-Providing	928	2.1%	11,611	13.1%
Trade, Transportation and Utilities	251	-10.7%	3,587	14.3%
Information	27	28.6%	350	16.3%
Financial Services	140	12.9%	739	4.4%
Professional and Business Services	127	1.6%	753	-9.7%
Education and Health Services	117	1.7%	3,176	21.7%
Leisure and Hospitality	157	9.8%	2,516	14.3%
Other Services	105	5.0%	481	3.9%
Unclassified	4		9	
Federal Government			277	7.4%
State Government			3,575	3.8%
Local Government			3,489	-0.8%

2008-09 Ohio Graduation Test (OGT) <sup>9</sup>  
 District Ranking  
 Percent of 10<sup>th</sup> Graders Proficient or Above



## Data Sources:

- <sup>1</sup> Annual Estimates of the Resident Population by Selected Age Groups and Sex for Counties: April 1, 2000 to July 1, 2008. U.S. Census Bureau. Accessed on May 29, 2009 from <http://www.census.gov/popest/counties/asrh/files/cc-est2008-agesex-39.csv>.
- <sup>2</sup> 2007 Population Estimates by County, City Village and Township. Office of Policy, Research and Strategic Planning, Ohio Department of Development, July 2008. Accessed on June 16, 2009 from <http://www.odod.state.oh.us/research/>.
- <sup>3</sup> 2007 Ohio County Profiles, Office of Policy, Research and Strategic Planning, Ohio Department of Development, January 2009. Accessed on June 12, 2009 from <http://www.odod.state.oh.us/research>.
- <sup>4</sup> Ohio County Profiles, Ohio Department of Job and Family Services, July 2008. Accessed on June 4, 2009 from <http://jfs.ohio.gov/county>.
- <sup>5</sup> 2007 Poverty and Median Income Estimates – Counties. Census Bureau, Small Area Estimates Branch, Release date: 12.2008. Accessed on March 24, 2009 from <http://www.census.gov/did/www/saipe/data/statecounty/data/2007.html>.
- <sup>6</sup> Estimated Housing Units for Ohio Places, County and County Subdivisions 2000-2006. Office of Policy, Research and Strategic Planning, Ohio Department of Development, September 2007. Accessed on May 26, 2009 from <http://www.odod.state.oh.us/research>.
- <sup>7</sup> 2007 Educational Attainment, School Enrollment. U.S. Census Bureau, 2005-2007 American Community Survey 3-Year Estimates. Accessed on February 26, 2009 from <http://factfinder.census.gov>.
- <sup>8</sup> Commuting Patterns by County, Office of Policy, Research and Strategic Planning, Ohio Department of Development. Accessed on June 17, 2009 from <http://www.odod.state.oh.us/research/files/P0005.htm>.
- <sup>9</sup> Ohio Department of Education, 2007-2008 School Year Report Card, August 2008. Accessed on May 24, 2009 from <http://webapp2.ode.state.oh.us/reportcard/archives/Default.asp>.
- <sup>10</sup> 2008 Civilian Labor Force Estimates with Unemployment Rate Map, Ohio Department of Job and Family Services, Office of Workforce Development, Bureau of Labor Market Information, March 12, 2009. Accessed on June 4, 2009 from <http://lmi.state.oh.us/laus/laus.html>.
- <sup>11</sup> 2000 Educational Attainment, School Enrollment. U.S. Census Bureau, Census 2000 Summary File 3 (SF 3). Accessed on February 26, 2009 from <http://factfinder.census.gov>.
- <sup>12</sup> Taxable Value of Real Property by Class of Property and County, Calendar Year 2007, Ohio Department of Taxation, Accessed on June 3, 2008 from [http://tax.ohio.gov/divisions/tax\\_analysis/tax\\_data\\_series/tangible\\_personal\\_property/pd31/pd31cy07.stm](http://tax.ohio.gov/divisions/tax_analysis/tax_data_series/tangible_personal_property/pd31/pd31cy07.stm).
- <sup>13</sup> Pediatric Nutrition Surveillance Data from WIC Participants in 2005, Ohio Department of Health, Accessed on May 22, 2009 from <http://www.odh.ohio.gov/ASSETS/4698F5F01183460DAE7A79CE5B9D98AB/2002cty.pdf>.
- <sup>14</sup> A Report on Body Mass Index of Ohio's Third Graders 2004-2005, Ohio Department of Health Division of Family and Community Health Services, Accessed on May 22, 2009 from <http://healthyohioprogram.org/ASSETS/7FBDB7A5C3FB4977A430A1EA46C642D9/bmirept.pdf>.
- <sup>15</sup> US Census 2000, Summary File 3, Poverty Status in 1999 of Families by Family Type by Presence and Age of Related Children <18 Years, Accessed on 8/3/09.
- <sup>16</sup> Aggregate Kindergarten Readiness Assessment-Literacy (KRA-L) Data for Fall 2007 District Scores by County, Accessed on 8/3/09 from <http://education.ohio.gov/GD/DocumentManagement/DocumentDownload.aspx?DocumentID=50667>.