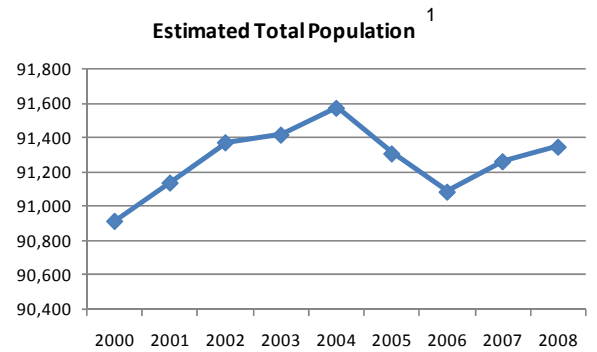
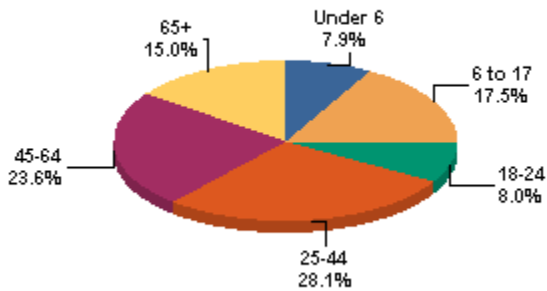


	2000 Census	2006 Estimate	2007 Estimate	Average Annual Rate of Change
Population				
Tuscarawas County	90,914	91,209	91,398	0.10%
Baltic vill.	629	622	621	-0.18%
Barnhill vill.	364	374	373	0.34%
Bolivar vill.	894	889	888	-0.09%
Dennison vill.	2,992	2,891	2,887	-0.49%
Dover city	12,210	12,428	12,472	0.21%
Gnadenhutten vill.	1,280	1,285	1,286	0.01%
Midvale vill.	547	586	585	0.90%
Mineral City vill.	841	844	843	0.03%
Newcomerstown vill.	4,008	3,904	3,902	-0.38%
New Philadelphia city	17,056	17,282	17,339	0.19%
Parral vill.	241	234	234	-0.41%
Port Washington vill.	552	567	567	0.37%
Roswell vill.	276	280	280	0.20%
Stone Creek vill.	184	181	180	-0.30%
Strasburg vill.	2,310	2,637	2,673	1.99%
Sugarcreek vill.	2,174	2,156	2,171	-0.06%
Tuscarawas vill.	934	972	977	0.65%
Uhrichsville city	5,662	5,522	5,521	-0.35%
Zoar village	193	191	191	-0.14%
The remaining of Tuscarawas County	37,567	37,364	37,408	-0.01%

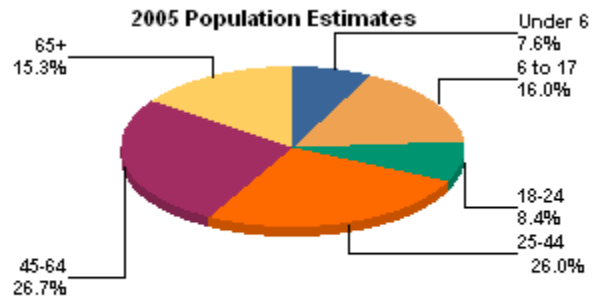
	Total Population	Population Under 5	Population 5-13	Population 14-17
1980 Census	84,614	Not Available		
1990 Census	84,090	Not Available		
2000 Census	90,914	6,002 6.6%	11,521 12.7%	5,572 6.1%
2001 Estimate	91,138	5,931 6.5%	11,415 12.5%	5,470 6.0%
2002 Estimate	91,374	5,908 6.5%	11,273 12.3%	5,332 5.8%
2003 Estimate	91,419	5,904 6.5%	11,093 12.1%	5,324 5.8%
2004 Estimate	91,576	5,886 6.4%	10,902 11.9%	5,232 5.7%
2005 Estimate	91,309	5,858 6.4%	10,801 11.8%	5,087 5.6%
2006 Estimate	91,085	5,781 6.3%	10,667 11.7%	5,037 5.5%
2007 Estimate	91,263	5,843 6.4%	10,525 11.5%	4,945 5.4%
2008 Estimate	91,348	5,820 6.4%	10,466 11.5%	4,825 5.3%



2000 Population Percent by Age



2005 Population Estimates



	2000 Census	2006 Estimate	2007 Estimate	Average Annual Rate of Change
Auburn twp	1,078	1,050	1,049	-0.38%
Bucks twp	1,601	1,574.0	1,571	-0.26%
Clay twp	1,981	1,960	1,960	-0.15%
Dover twp	4,726	4,686	4,717	0.18%
Fairfield twp	1,487	1,453	1,452	-0.33%
Franklin twp	4,244	4,604	4,638	1.23%
Goshen twp	5,285	5,194	5,186	-0.16%
Jefferson twp	976	956	954	-0.31%
Lawrence twp	5,241	5,631	5,690	1.14%
Mill twp	10,290	10,024	10,016	-0.37%
Oxford twp	5,133	5,000	4,996	-0.37%
Perry twp	462	454	453	-0.27%
Rush twp	887	868	866	-0.33%
Salem twp	1,673	1,668	1,665	-0.07%
Sandy twp	3,354	3,358	3,349	-0.02%
Sugar Creek twp	3,894	3,826	3,840	-0.19%
Union twp	1,599	1,571	1,569	-0.26%
Warren twp	1,194	1,168	1,166	-0.33%
Warwick twp	2,746	2,742	2,744	0.00%
Washington twp	762	746	744	-0.33%
Wayne twp	1,743	1,709	1,707	-0.29%
York twp	1,292	1,257	1,255	-0.40%

Income and Employment Support 2007 ⁴

	Tuscarawas County	Ohio
Dependency Rate	21.7%	17.1%
Food Stamps	15.5%	14.7%
OWF cash assistance	2.1%	3.0%

Workforce Investment Act

Adult employment rate	87.5%	78.5%
Adult retention rate	94.1%	86.2%
Youth placement rate	70.0%	62.6%

Family Poverty and Employment ¹⁵

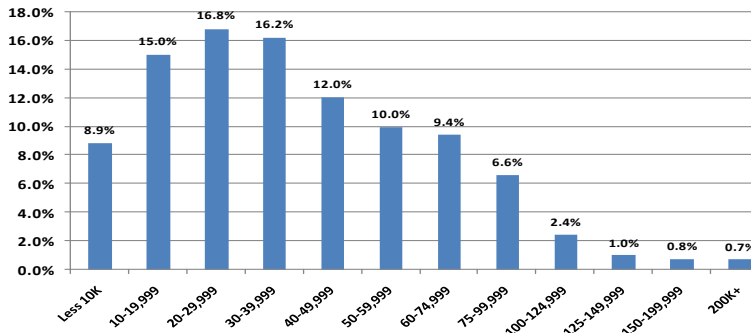
Poverty Status: Percent of total families in poverty (2000 Census)

Married Couples	42.7%
Male householder	9.2%
Female householder	48.1%

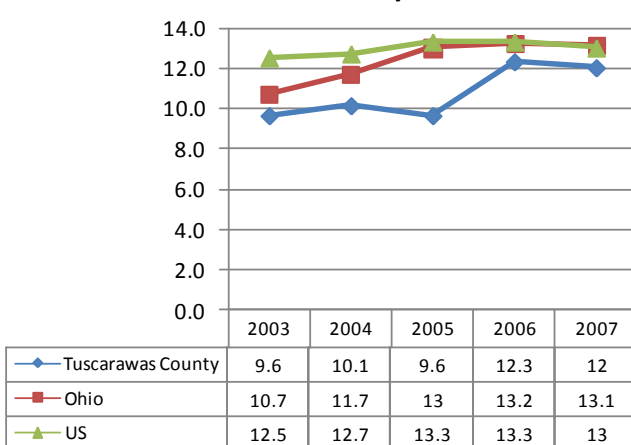
Poverty Status: Percent of total families in poverty (2000 Census)

Total Families	25,396	100%
Married couples, both in labor force	10,707	42.2%
Married couples, husband in labor force	4,814	19.0%
Married couples, wife in labor force	1,257	4.9%
Married couples not in labor force	4,087	16.1%
Male householder, in labor force	1,055	4.2%
Male householder not in labor force	186	0.7%
Female householder, in labor force	2,258	8.9%
Female householder not in labor force	1,032	4.1%

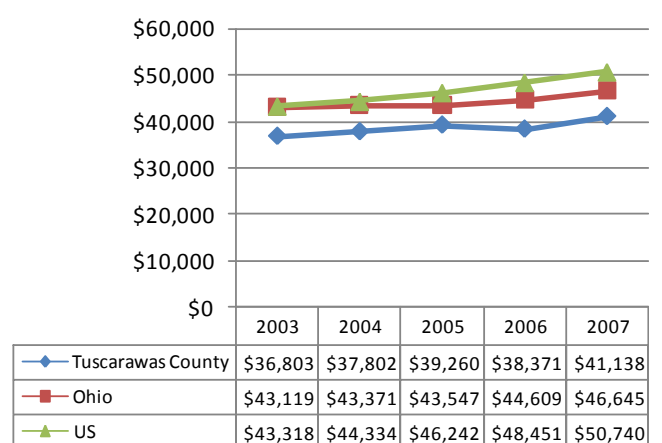
Percent of Population by Household Income ³
2000 Census



Poverty Rate ⁵



Median Household Income ⁵



Housing Units (2000 Census) ⁶

Total Housing Units	35,653
Owner occupied	70.1%
Renter occupied	23.4%
Vacant	6.5%
Median gross income as percentage of household income	22.7%
Median monthly owner's cost for housing with a mortgage as a percentage of household income	20.3%

Total Housing Units ⁶

Cities and Townships with Villages	2000 Census	2005 Census	2006 Estimate
Tuscarawas Co	38,113	38,865	38,934
Auburn township	349	346	345
Bucks township	601	603	602
Clay township	828	834	834
Dover city	5,266	5,421	5,427
Dover township	1,776	1,802	1,820
Fairfield township	603	601	600
Franklin township	1,760	1,925	1,948
Goshen township	2,124	2,146	2,141
Jefferson township	396	395	395
Lawrence township	2,143	2,322	2,341
Mill township	4,404	4,376	4,364
New Philadelphia city	7,807	8,011	8,035
Oxford township	2,304	2,290	2,284
Perry township	212	212	212
Rush township	342	342	341
Salem township	646	654	656
Sandy township	1,385	1,409	1,412
Sugar Creek township	1,418	1,413	1,420
Union township	610	611	610
Warren township	612	611	609
Warwick township	1,162	1,182	1,181
Washington township	295	294	294
Wayne township	563	562	561
York township	507	503	502

Anemia Indicators Children Aged < 5 Years ¹³

	Number	Percent	Rank
Tuscarawas County	1,414	6.50	14

Prevalence Of Overweight and At Risk Of Overweight Among Ohio Third Graders, 2004-5* ¹⁴

Percent overweight and at risk of overweight	Percent overweight
37.6% (31.9-43.6)	15.4% (11.8-19.9)

* Confidence Interval 95 percent

Educational Attainment ^{7, 11}	2000 Census Percent	2007 Estimates	2000 Census State	2000 Census National
Population 25 years and over	100.0%	100.0%	100.0%	100.0%
Less than 9th grade	6.5%	5.1%	4.5%	7.5%
9th to 12th grade	13.2%	11.4%	12.6%	12.1%
High school or equivalent	48.2%	48.6%	36.1%	28.6%
Some college, no degree	15.0%	15.1%	19.9%	21.0%
Associate's degree	4.9%	6.4%	5.9%	6.3%
Bachelor's degree	8.1%	8.8%	13.7%	15.5%
Graduate or professional degree	4.1%	4.6%	7.4%	8.9%

School Enrollment ^{7, 11}	2000 Census	2007 Estimate
Population 3 years and over enrolled in school	21272	20881
Nursery school, preschool	1,490	1,328
Kindergarten	1,186	1,327
Elementary school (grades 1-8)	10,424	9,135
High School (grades 9-12)	5,509	4,743
College or graduate school	2,663	4,348

Kindergarten Readiness Assessment-Literacy Scores-Fall 2007 ¹⁶

District Name	Count of Test Takers fall 2007	Average Score Fall 2007	Percent Band 1 (Scores 0-13)	Percent Band 2 (Scores 14-23)	Percent Band 3 (Scores 24-29)
Claymont City SD	159	19.0	23.9	43.4	32.7
Dover City SD	195	20.2	21.0	39.0	40.0
Garaway Local SD	83	19.2	21.7	51.8	26.5
Indian Valley Local SD	142	20.4	19.0	40.1	40.9
New Philadelphia City SD	196	20.0	19.9	42.9	37.2
Newcomerstown Ex Vill SD	86	19.4	24.4	41.9	33.7
Strasburg-Franklin Local SD	40	21.0	17.5	35.0	47.5
Tuscarawas Valley Local SD	104	20.4	17.3	47.1	35.6
State	122,786	19.7	21.8	40.6	37.6

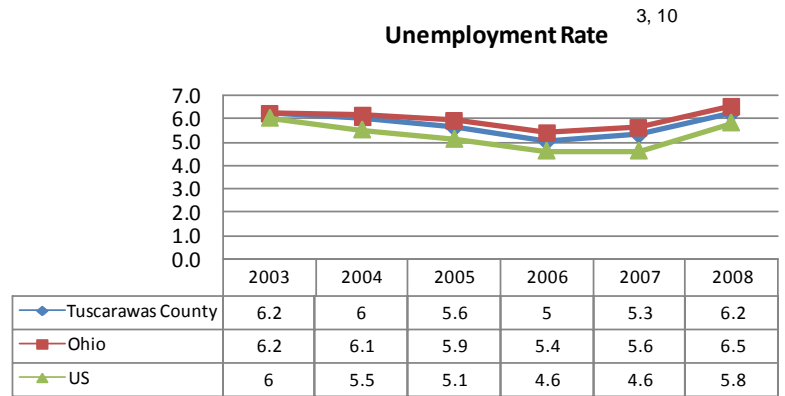
Childcare Services ⁴

	2006	2007
Number of Children Using Publicly Funded Child Care (Unduplicated Count)	936	954
Public Funds Used for Child Care Expenditures	\$1,951,999	\$1,797,940
Annual Average Expenditures per Child	\$2,189	\$1,885

Childcare Providers

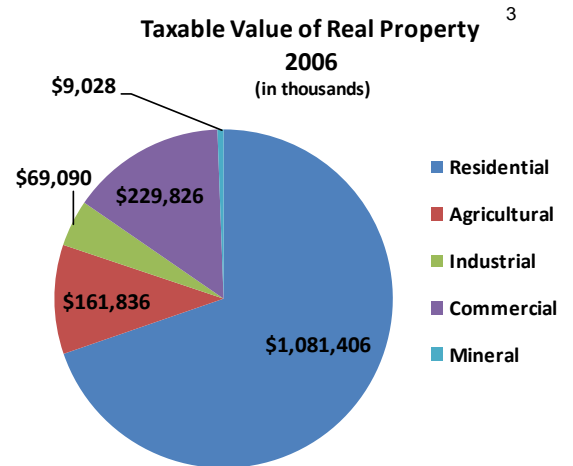
	2006	2007
Number of Licensed Child Care Centers	20	27

Major Employers by Industry 3	
Dover City Bd of Ed New Philadelphia City Bd of Ed	Govt
Alamo Group/Gradall Industries Allied Machine & Engineering Sanwa Shutter Corp/Genie Co Smurfit-Stone Container Corp Zimmer Holdings Inc	Mfg
Union Hospital	Serv
Wal-Mart Stores Inc	Trade



Number of workers 16+ years of age living in Tuscarawas County			Number of workers 16+ years of age working in Tuscarawas County		
	42,093		37,247		
Commute Out To	Number	Percent	Commute In From	Number	Percent
Stark Co. OH	5,707	13.6%	Stark Co. OH	1,679	4.5%
Holmes Co. OH	1,983	4.7%	Harrison Co. OH	1,410	3.8%
Coshocton Co. OH	709	1.7%	Carroll Co. OH	840	2.3%
Wayne Co. OH	688	1.6%	Coshocton Co. OH	780	2.1%
Summit Co. OH	606	1.4%	Holmes Co. OH	538	1.4%
Carroll Co. OH	289	0.7%	Guemsey Co. OH	249	0.7%
Harrison Co. OH	182	0.4%	Summit Co. OH	150	0.4%
Guemsey Co. OH	153	0.4%	Wayne Co. OH	125	0.3%
Cuyahoga Co. OH	128	0.3%	Jefferson Co. OH	89	0.2%
Muskingum Co. OH	124	0.3%	Belmont Co. OH	73	0.2%

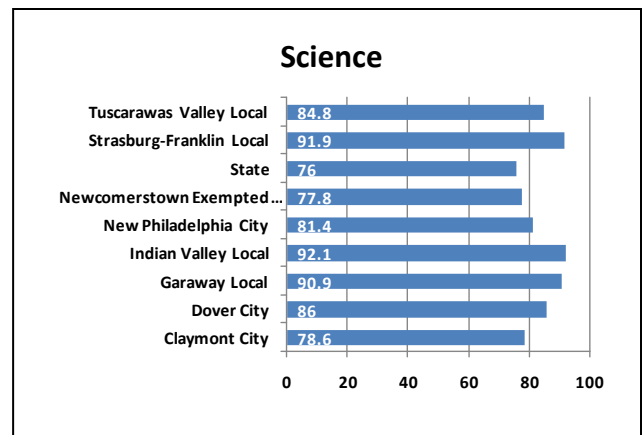
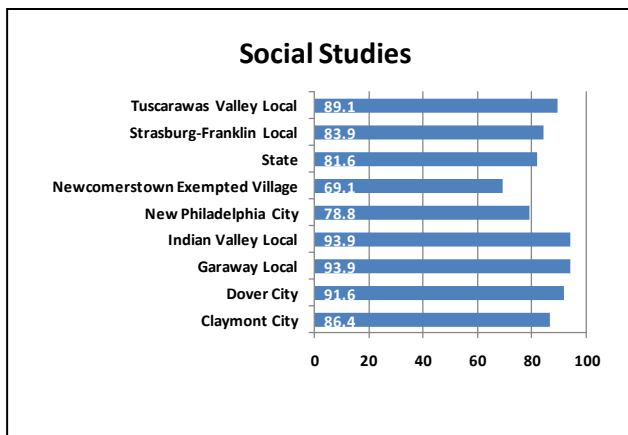
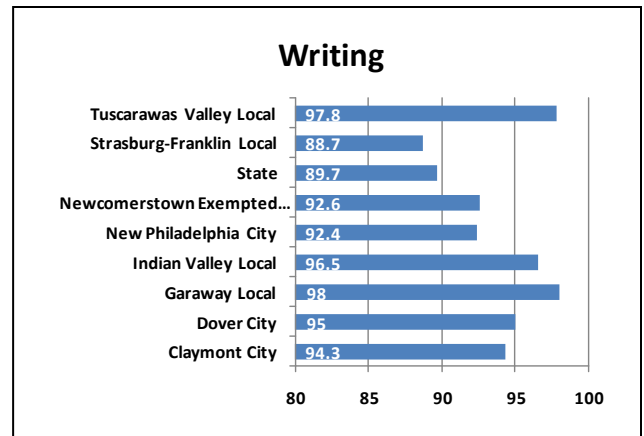
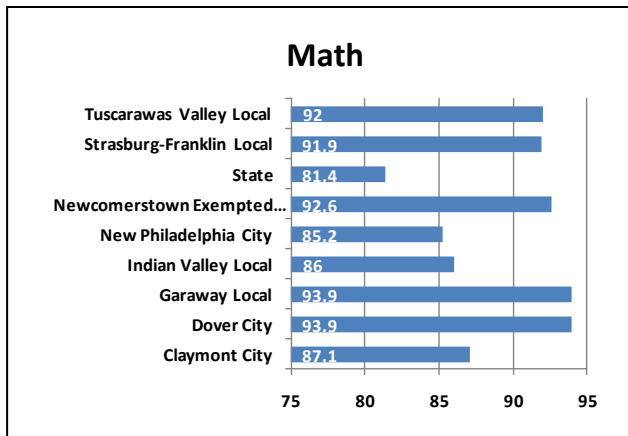
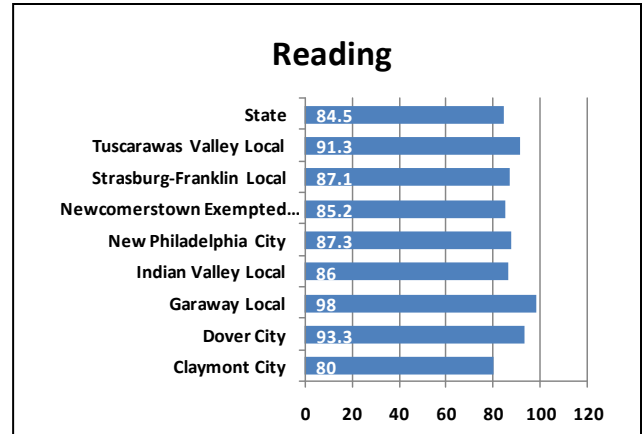
Regional Commuting Patterns	
Number of workers living in county	42,093
Number of workers working in county	37,247
Net worker flow	-4846
Percent who commute out	26.8%
Average commute time in minutes	21.6



Employment by Industry ³

Industrial Sector	Number of Establishments		Average Employment	
	2006	Change since 2001	2006	Change since 2001
Private sector	2,191	0.0%	31,742	1.1%
Goods-Producing	524	-4.9%	10,511	-5.7%
Natural Resources and Mining	55	-11.3%	702	16.4%
Construction	239	-7.0%	1,567	3.2%
Manufacturing	230	-0.9%	8,242	-8.7%
Service-Providing	1,667	1.6%	21,231	4.9%
Trade, Transportation and Utilities	550	-4.5%	6,927	-6.3%
Information	22	10.0%	484	35.6%
Financial Services	186	8.8%	1,110	7.2%
Professional and Business Services	233	9.4%	2,715	29.2%
Education and Health Services	210	5.0%	4,723	13.9%
Leisure and Hospitality	257	12.7%	3,863	2.2%
Other Services	205	-9.7%	1,401	-0.4%
Unclassified	5		8	
Federal Government			220	-7.2%
State Government			466	-6.4%
Local Government			4,140	-0.6%

2008-2009 Ohio Graduation Test (OGT) ⁹
District Ranking
Percent of 10th Graders Proficient of Above



Data Sources:

- ¹ Annual Estimates of the Resident Population by Selected Age Groups and Sex for Counties: April 1, 2000 to July 1, 2008. U.S. Census Bureau. Accessed on May 29, 2009 from <http://www.census.gov/popest/counties/asrh/files/cc-est2008-agesex-39.csv>.
- ² 2007 Population Estimates by County, City Village and Township. Office of Policy, Research and Strategic Planning, Ohio Department of Development, July 2008. Accessed on June 16, 2009 from <http://www.odod.state.oh.us/research/>.
- ³ 2007 Ohio County Profiles, Office of Policy, Research and Strategic Planning, Ohio Department of Development, January 2009. Accessed on June 12, 2009 from <http://www.odod.state.oh.us/research>.
- ⁴ Ohio County Profiles, Ohio Department of Job and Family Services, July 2008. Accessed on June 4, 2009 from <http://jfs.ohio.gov/county>.
- ⁵ 2007 Poverty and Median Income Estimates – Counties. Census Bureau, Small Area Estimates Branch, Release date: 12.2008 Accessed on March 24, 2009 from <http://www.census.gov/did/www/saipe/data/statecounty/data/2007.html>
- ⁶ Estimated Housing Units for Ohio Places, County and County Subdivisions 2000-2006. Office of Policy, Research and Strategic Planning, Ohio Department of Development, September 2007. Accessed on May 26, 2009 from <http://www.odod.state.oh.us/research>.
- ⁷ 2007 Educational Attainment, School Enrollment. U.S. Census Bureau, 2005-2007 American Community Survey 3-Year Estimates. Accessed on February 26, 2009 from <http://factfinder.census.gov>.
- ⁸ Commuting Patterns by County, Office of Policy, Research and Strategic Planning, Ohio Department of Development. Accessed on June 17, 2009 from <http://www.odod.state.oh.us/research/files/P0005.htm>.
- ⁹ Ohio Department of Education, 2007-2008 School Year Report Card, August 2008. Accessed on May 24, 2009 from <http://webapp2.ode.state.oh.us/reportcard/archives/Default.asp>.
- ¹⁰ 2008 Civilian Labor Force Estimates with Unemployment Rate Map, Ohio Department of Job and Family Services, Office of Workforce Development, Bureau of Labor Market Information, March 12, 2009. Accessed on June 4, 2009 from <http://lmi.state.oh.us/laus/laus.html>.
- ¹¹ 2000 Educational Attainment, School Enrollment. U.S. Census Bureau, Census 2000 Summary File 3 (SF 3). Accessed on February 26, 2009 from <http://factfinder.census.gov>.
- ¹² Taxable Value of Real Property by Class of Property and County, Calendar Year 2007, Ohio Department of Taxation, Accessed on June 3, 2008 from http://tax.ohio.gov/divisions/tax_analysis/tax_data_series/tangible_personal_property/pd31/pd31cy07.stm.
- ¹³ Pediatric Nutrition Surveillance Data from WIC Participants in 2005, Ohio Department of Health, Accessed on May 22, 2009 from <http://www.odh.ohio.gov/ASSETS/4698F5F01183460DAE7A79CE5B9D98AB/2002cty.pdf>.
- ¹⁴ A Report on Body Mass Index of Ohio's Third Graders 2004-2005, Ohio Department of Health Division of Family and Community Health Services, Accessed on May 22, 2009 from <http://healthyohioprogram.org/ASSETS/7FBDB7A5C3FB4977A430A1EA46C642D9/bmirept.pdf>.
- ¹⁵ US Census 2000, Summary File 3, Poverty Status in 1999 of Families by Family Type by Presence and Age of Related Children <18 Years, Accessed on 8/3/09.
- ¹⁶ Aggregate Kindergarten Readiness Assessment-Literacy (KRA-L) Data for Fall 2007 District Scores by County, Accessed on 8/3/09 from <http://education.ohio.gov/GD/DocumentManagement/DocumentDownload.aspx?DocumentID=50667>.