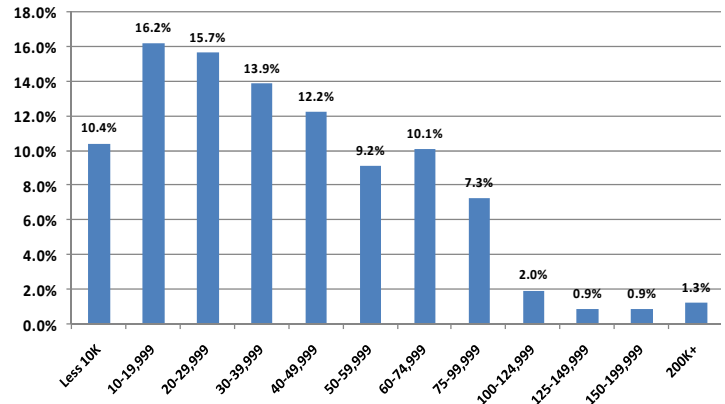


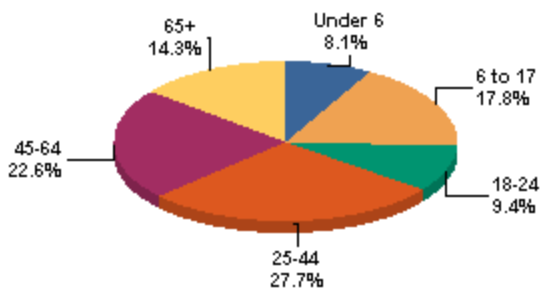
Population	2000 Census	2006 Estimate	2007 Estimate	Average Annual Rate of Change
Muskingum County	84,585	85,500	85,333	0.10%
Adamsville vill.	127	132	131	0.43%
Dresden vill.	1,423	1,426	1,422	-0.01%
Frazeysburg vill.	1,201	1,293	1,290	0.54%
Fultonham vill.	151	157	156	0.45%
Gratiot vill.	91	95	94	0.45%
New Concord vill.	2,651	2,647	2,645	-0.07%
Norwich vill.	113	117	117	0.50%
Philo vill.	769	767	765	-0.07%
Roseville vill.	765	756	754	-0.20%
South Zanesville vill.	1,936	1,983	1,982	0.34%
Zanesville city	25,586	25,193	25,116	-0.27%
The remaining of Muskingum County	49,772	50,934	50,861	0.32%

	Total Population	Population Under 5	Population 5-13	Population 14-17
1980 Census	83,340	Not Available		
1990 Census	82,068	Not Available		
2000 Census	84,585	5,637 6.7%	11,135 13.2%	5,158 6.1%
2001 Estimate	84,695	5,489 6.5%	11,018 13.0%	5,122 6.0%
2002 Estimate	85,074	5,458 6.4%	10,857 12.8%	5,119 6.0%
2003 Estimate	85,092	5,321 6.3%	10,837 12.7%	4,943 5.8%
2004 Estimate	85,155	5,306 6.2%	10,656 12.5%	4,949 5.8%
2005 Estimate	85,138	5,270 6.2%	10,428 12.2%	4,982 5.9%
2006 Estimate	85,378	5,316 6.2%	10,185 11.9%	4,997 5.9%
2007 Estimate	85,230	5,348 6.3%	9,992 11.7%	4,959 5.8%
2008 Estimate	85,087	5,355 6.3%	9,785 11.5%	4,853 5.7%

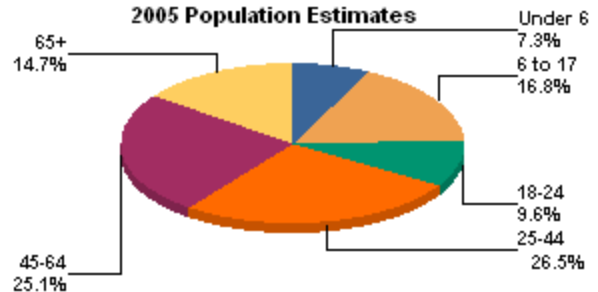
Percent of Population by Household Income 3
2000 Census



2000 Population Percent by Age 2



2005 Population Estimates 2



	2000 Census	2006 Estimate	2007 Estimate	Average Annual Rate of Change
Adams twp	516	553	553	0.96%
Blue Rock twp	641	676.0	675	0.59%
Brush Creek twp	1,375	1,424	1,421	0.45%
Cass twp	1,492	1,533	1,532	0.37%
Clay twp	1,038	1,041	1,039	0.01%
Falls twp	8,585	8,646	8,631	0.08%
Harrison twp	1,638	1,664	1,660	0.18%
Highland twp	848	883	883	0.56%
Hopewell twp	3,038	3,118	3,112	0.33%
Jackson twp	2,221	2,482	2,479	1.53%
Jefferson twp	1,766	1,775	1,769	0.02%
Licking twp	2,248	2,294	2,293	0.27%
Madison twp	487	520	519	0.88%
Meigs twp	173	203	204	2.55%
Monroe twp	439	473	473	1.03%
Muskingum twp	3,813	3,854	3,851	0.22%
Newton twp	5,402	5,556	5,543	0.22%
Perry twp	2,420	2,453	2,449	0.26%
Rich Hill twp	385	424	425	1.37%
Salem twp	830	869	868	0.62%
Salt Creek twp	1,113	1,149	1,148	0.47%
Springfield twp	5,433	5,464	5,456	0.19%
Union twp	4,359	4,390	4,387	0.09%
Washington twp	4,284	4,360	4,351	0.16%
Wayne twp	4,455	4,503	4,496	0.13%

Income and Employment Support 2007 ⁴

	Muskingum County	Ohio
Dependency Rate	24.9%	17.1%
Food Stamps	25.4%	14.7%
OWF cash assistance	5.3%	3.0%

Workforce Investment Act

	Muskingum County	Ohio
Adult employment rate	100.0%	78.5%
Adult retention rate	96.7%	86.2%
Youth placement rate	59.5%	62.6%

Family Poverty and Employment ¹⁵

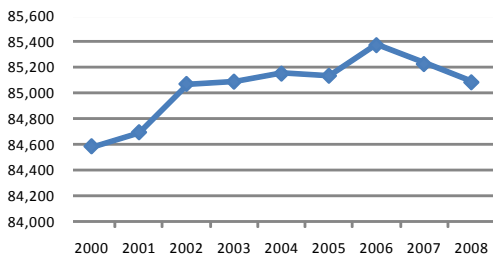
Poverty Status: Percent of total families in poverty (2000 Census)

Married Couples	39.9%
Male householder	7.6%
Female householder	52.5%

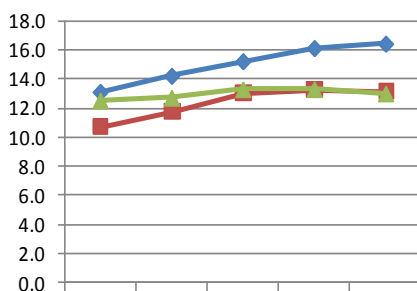
Poverty Status: Percent of total families in poverty (2000 Census)

Total Families	22,788	100%
Married couples, both in labor force	9,766	42.9%
Married couples, husband in labor force	3,509	15.4%
Married couples, wife in labor force	1,344	5.9%
Married couples not in labor force	3,358	14.7%
Male householder, in labor force	939	4.1%
Male householder not in labor force	302	1.3%
Female householder, in labor force	2,281	10.0%
Female householder not in labor force	1,289	5.7%

Estimated Total Population ¹

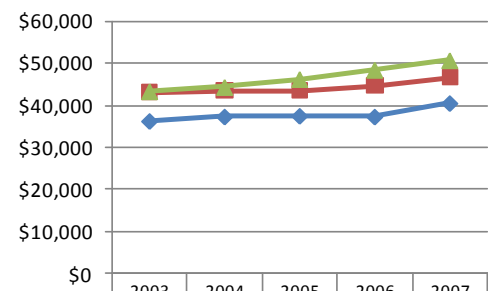


Poverty Rate ⁵



	2003	2004	2005	2006	2007
— Muskingum County	13.1	14.2	15.2	16.1	16.4
— Ohio	10.7	11.7	13	13.2	13.1
— US	12.5	12.7	13.3	13.3	13

Median Household Income ⁵



	2003	2004	2005	2006	2007
— Muskingum County	\$36,120	\$37,192	\$37,368	\$37,179	\$40,447
— Ohio	\$43,119	\$43,371	\$43,547	\$44,609	\$46,645
— US	\$43,318	\$44,334	\$46,242	\$48,451	\$50,740

Housing Units (2000 Census) ⁶

Total Housing Units	32,518
Owner occupied	68.0%
Renter occupied	24.5%
Vacant	7.5%
Median gross income as percentage of household income	23.1%
Median monthly owner's cost for housing with a mortgage as a percentage of household income	19.2%

Total Housing Units ⁶

Cities and Townships with Villages	2000 Census	2005 Census	2006 Estimate
Muskingum Co	35,163	35,570	35,545
Adams township	173	185	185
Blue Rock township	334	349	349
Brush Creek townshi	533	552	552
Cass township	596	612	613
Clay township	450	452	452
Falls township	3,565	3,595	3,594
Harrison township	738	752	752
Highland township	327	340	341
Hopewell township	1,117	1,147	1,147
Jackson township	911	1,015	1,015
Jefferson township	841	847	846
Licking township	813	830	830
Madison township	245	261	262
Meigs township	85	100	101
Monroe township	162	174	175
Muskingum township	1,484	1,509	1,510
Newton township	2,167	2,210	2,209
Perry township	890	909	909
Rich Hill township	163	178	180
Salem township	305	319	320
Salt Creek township	430	445	446
Springfield township	2,287	2,326	2,325
Union township	1,357	1,377	1,377
Washington townshiq	1,700	1,727	1,727
Wayne township	1,821	1,842	1,842
Zanesville city	11,669	11,517	11,486

Anemia Indicators Children Aged < 5 Years ¹³

	Number	Percent	Rank
Muskingum County	2,140	10.40	40

Prevalence Of Overweight and At Risk Of Overweight Among Ohio Third Graders, 2004-5* ¹⁴

Percent overweight and at risk of overweight	Percent overweight
37.1% (18.8–60.0)	23.6% (11.1–43.2)

* Confidence Interval 95 percent

Educational Attainment 7, 11	2000 Census Percent	2007 Estimates	2000 Census State	2000 Census National
Population 25 years and over	100.0%	100.0%	100.0%	100.0%
Less than 9th grade	4.5%	3.8%	4.5%	7.5%
9th to 12th grade	15.0%	11.5%	12.6%	12.1%
High school or equivalent	44.2%	46.3%	36.1%	28.6%
Some college, no degree	17.1%	18.8%	19.9%	21.0%
Associate's degree	6.6%	6.9%	5.9%	6.3%
Bachelor's degree	8.0%	7.6%	13.7%	15.5%
Graduate or professional degree	4.7%	5.2%	7.4%	8.9%

School Enrollment 7, 11	2000 Census	2007 Estimate
Population 3 years and over enrolled in school	21558	21749
Nursery school, preschool	1,452	1,021
Kindergarten	1,147	1,086
Elementary school (grades 1-8)	10,148	9,329
High School (grades 9-12)	5,045	5,096
College or graduate school	3,766	5,217

Kindergarten Readiness Assessment-Literacy Scores-Fall 2007 ¹⁶

District Name	Count of Test Takers fall 2007	Percent Average Score Fall 2007	Percent Band 1 (Scores 0-13)	Percent Band 2 (Scores 14-23)	Percent Band 3 (Scores 24-29)
East Muskingum Local SD	162	21.1	15.4	38.9	45.7
Franklin Local SD	159	21.8	15.7	31.5	52.8
Maysville Local SD	148	20.6	20.3	34.5	45.3
Tri-Valley Local SD	205	20.3	19.5	40.0	40.5
West Muskingum Local SD	128	19.7	19.5	46.1	34.4
Zanesville City SD	303	18.3	29.7	41.3	29.0
State	122,786	19.7	21.8	40.6	37.6

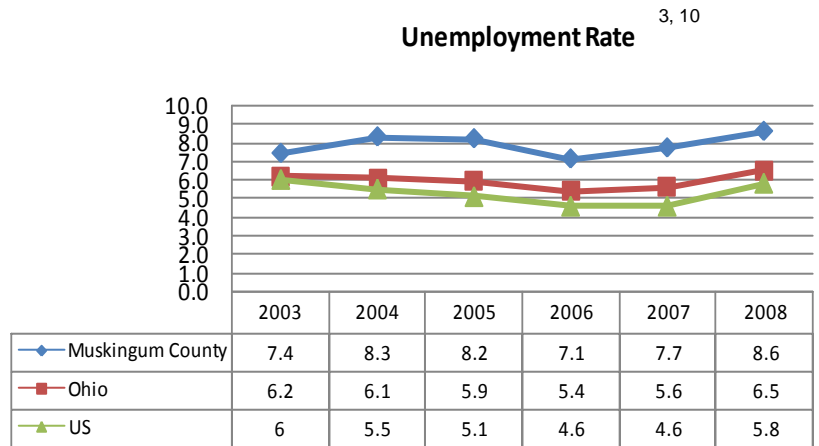
Childcare Services ⁴

	2006	2007
Number of Children Using Publicly Funded Child Care (Unduplicated Count)	1,927	1,923
Public Funds Used for Child Care Expenditures	\$3,842,161	\$3,973,961
Annual Average Expenditures per Child	\$1,994	\$2,067

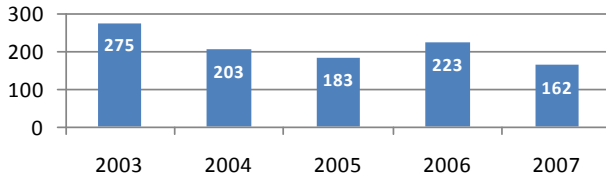
Childcare Providers

	2006	2007
Number of Licensed Child Care Centers	23	22

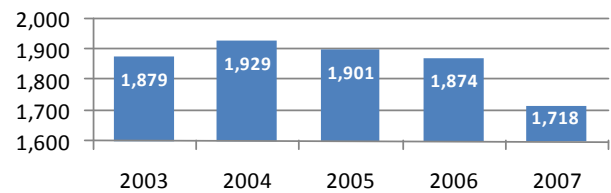
Major Employers by Industry 3	
Muskingum County Government Zanesville City Bd of Ed	Govt
5 B's Inc AK Steel Holding Co Longaberger Co Owens-Illinois/Owens-Brockway Wendy's Intl/New Bakery Co	Mfg
Genesis HealthCare System Muskingum College	Sev
AutoZone Inc Dollar General Corp	Trade



Number of Business starts 3



Number of Active Businesses 3

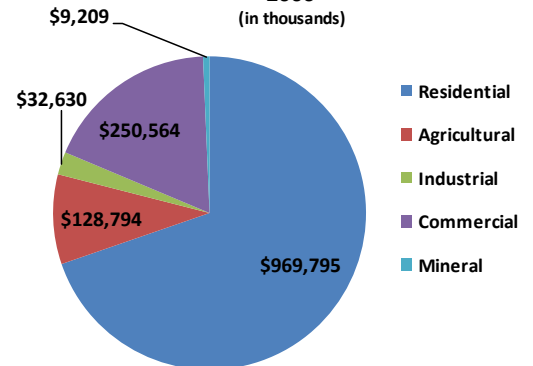


Number of workers 16+ years of age living in Muskingum County 37,774			Number of workers 16+ years of age working in Muskingum County 8	
Commute Out To	Number	Percent	Commute In From	Number
Licking Co. OH	2,667	7.1%	Guemsey Co. OH	1,815
Franklin Co. OH	2,078	5.5%	Perry Co. OH	1,451
Guemsey Co. OH	793	2.1%	Coshocton Co. OH	1,393
Perry Co. OH	570	1.5%	Licking Co. OH	1,100
Coshocton Co. OH	464	1.2%	Morgan Co. OH	707
Fairfield Co. OH	211	0.6%	Franklin Co. OH	275
Morgan Co. OH	211	0.6%	Noble Co. OH	274
Delaware Co. OH	80	0.2%	Fairfield Co. OH	158
Noble Co. OH	76	0.2%	Tuscarawas Co. OH	124
Washington Co. OH	72	0.2%	Belmont Co. OH	92

Regional Commuting Patterns 8

Number of workers living in county	37,774
Number of workers working in county	37,875
Net worker flow	101
Percent who commute out	20.9%
Average commute time in minutes	24.2

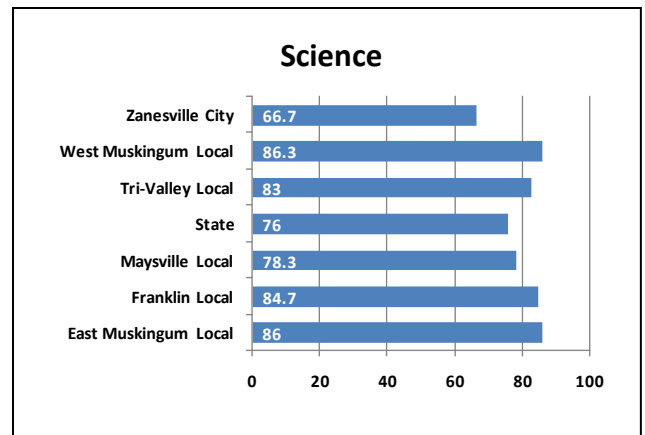
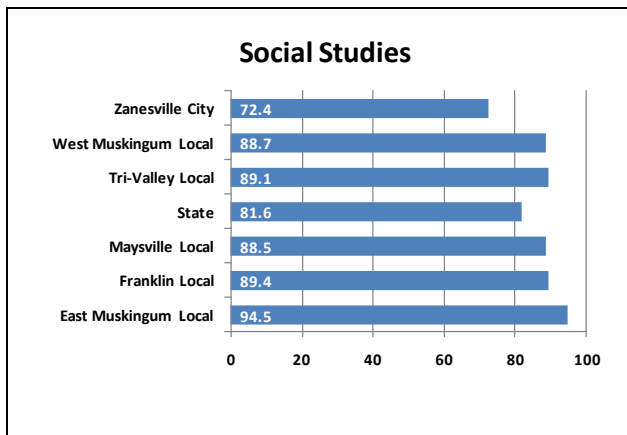
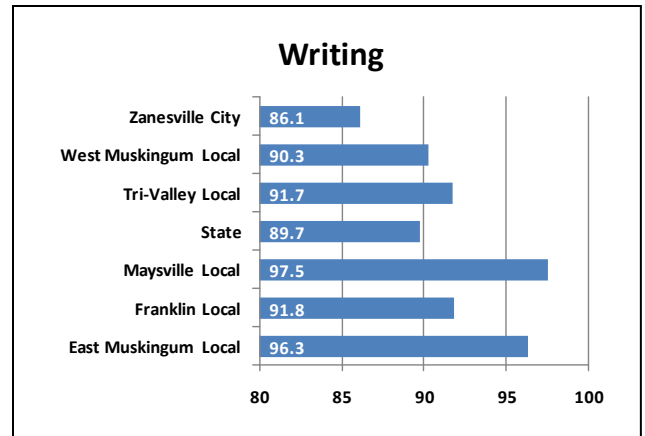
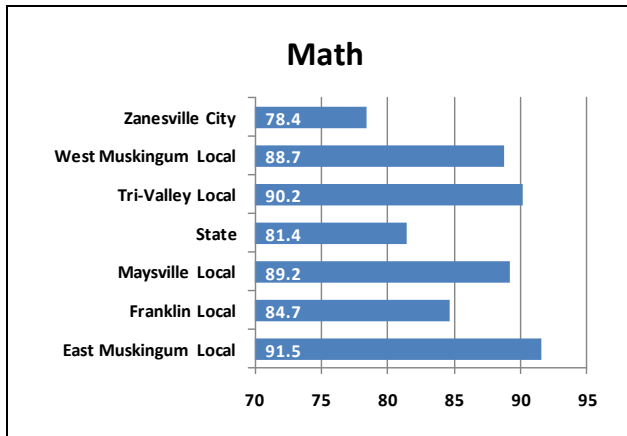
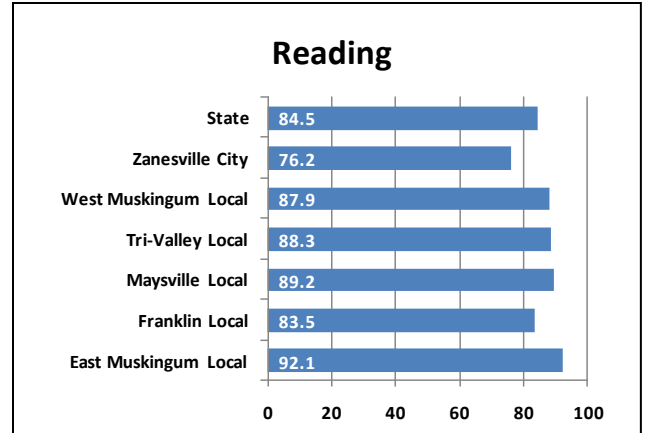
Taxable Value of Real Property 2006 3 (in thousands)



Employment by Industry ³

Industrial Sector	Number of Establishments		Average Employment	
	2006	Change since 2001	2006	Change since 2001
Private sector	1,841	-0.2%	29,775	-15.6%
Goods-Producing	366	0.5%	6,689	-41.2%
Natural Resources and Mining	43	26.5%	363	-11.5%
Construction	223	4.2%	1,198	-22.2%
Manufacturing	101	-13.7%	5,128	-65.6%
Service-Providing	1,475	0.4%	23,085	-3.5%
Trade, Transportation and Utilities	481	-8.4%	8,261	-15.4%
Information	18	12.5%	374	25.5%
Financial Services	185	9.5%	1,161	6.1%
Professional and Business Services	198	6.5%	1,641	-11.4%
Education and Health Services	223	7.7%	6,893	14.1%
Leisure and Hospitality	199	-0.5%	3,468	-1.5%
Other Services	172	-2.3%	1,282	-4.1%
Unclassified	1		6	
Federal Government			287	-8.0%
State Government			435	-8.6%
Local Government			4,503	2.1%

2008-2009 Ohio Graduation Test (OGT) ⁹
District Ranking
Percent of 10th Graders Proficient of Above



Data Sources:

- ¹ Annual Estimates of the Resident Population by Selected Age Groups and Sex for Counties: April 1, 2000 to July 1, 2008. U.S. Census Bureau. Accessed on May 29, 2009 from <http://www.census.gov/popest/counties/asrh/files/cc-est2008-agesex-39.csv>.
- ² 2007 Population Estimates by County, City Village and Township. Office of Policy, Research and Strategic Planning, Ohio Department of Development, July 2008. Accessed on June 16, 2009 from <http://www.odod.state.oh.us/research/>.
- ³ 2007 Ohio County Profiles, Office of Policy, Research and Strategic Planning, Ohio Department of Development, January 2009. Accessed on June 12, 2009 from <http://www.odod.state.oh.us/research>.
- ⁴ Ohio County Profiles, Ohio Department of Job and Family Services, July 2008. Accessed on June 4, 2009 from <http://jfs.ohio.gov/county>.
- ⁵ 2007 Poverty and Median Income Estimates – Counties. Census Bureau, Small Area Estimates Branch, Release date: 12.2008. Accessed on March 24, 2009 from <http://www.census.gov/did/www/saipe/data/statecounty/data/2007.html>
- ⁶ Estimated Housing Units for Ohio Places, County and County Subdivisions 2000-2006. Office of Policy, Research and Strategic Planning, Ohio Department of Development, September 2007. Accessed on May 26, 2009 from <http://www.odod.state.oh.us/research>.
- ⁷ 2007 Educational Attainment, School Enrollment. U.S. Census Bureau, 2005-2007 American Community Survey 3-Year Estimates. Accessed on February 26, 2009 from <http://factfinder.census.gov>.
- ⁸ Commuting Patterns by County, Office of Policy, Research and Strategic Planning, Ohio Department of Development. Accessed on June 17, 2009 from <http://www.odod.state.oh.us/research/files/P0005.htm>.
- ⁹ Ohio Department of Education, 2007-2008 School Year Report Card, August 2008. Accessed on May 24, 2009 from <http://webapp2.ode.state.oh.us/reportcard/archives/Default.asp>.
- ¹⁰ 2008 Civilian Labor Force Estimates with Unemployment Rate Map, Ohio Department of Job and Family Services, Office of Workforce Development, Bureau of Labor Market Information, March 12, 2009. Accessed on June 4, 2009 from <http://lmi.state.oh.us/laus/laus.html>.
- ¹¹ 2000 Educational Attainment, School Enrollment. U.S. Census Bureau, Census 2000 Summary File 3 (SF 3). Accessed on February 26, 2009 from <http://factfinder.census.gov>.
- ¹² Taxable Value of Real Property by Class of Property and County, Calendar Year 2007, Ohio Department of Taxation, Accessed on June 3, 2008 from http://tax.ohio.gov/divisions/tax_analysis/tax_data_series/tangible_personal_property/pd31/pd31cy07.stm.
- ¹³ Pediatric Nutrition Surveillance Data from WIC Participants in 2005, Ohio Department of Health, Accessed on May 22, 2009 from <http://www.odh.ohio.gov/ASSETS/4698F5F01183460DAE7A79CE5B9D98AB/2002cty.pdf>.
- ¹⁴ A Report on Body Mass Index of Ohio's Third Graders 2004-2005, Ohio Department of Health Division of Family and Community Health Services, Accessed on May 22, 2009 from <http://healthyohioprogram.org/ASSETS/7FBDB7A5C3FB4977A430A1EA46C642D9/bmirept.pdf>.
- ¹⁵ US Census 2000, Summary File 3, Poverty Status in 1999 of Families by Family Type by Presence and Age of Related Children <18 Years, Accessed on 8/3/09.
- ¹⁶ Aggregate Kindergarten Readiness Assessment-Literacy (KRA-L) Data for Fall 2007 District Scores by County, Accessed on 8/3/09 from <http://education.ohio.gov/GD/DocumentManagement/DocumentDownload.aspx?DocumentID=50667>.