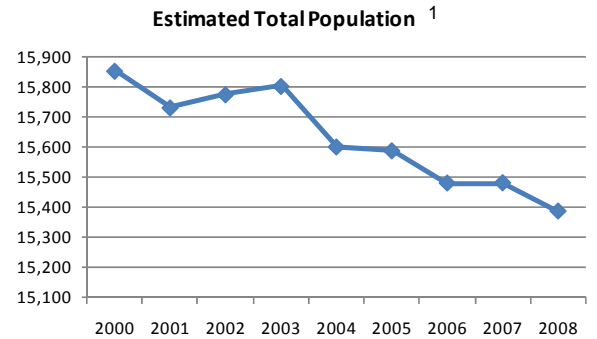
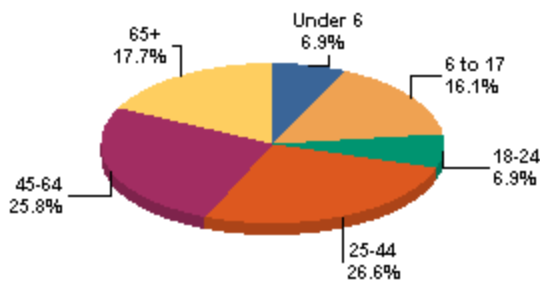


Population	2000 Census	2006 Estimate	2007 Estimate	Average Annual Rate of Change
Harrison County	15,856	15,516	15,506	-0.30%
Adena vill.	139	135	135	-0.40%
Bowerston vill.	414	414	414	0.00%
Cadiz vill.	3,308	3,310	3,308	0.00%
Deersville vill.	82	82	82	0.00%
Freeport vill.	398	398	397	-0.03%
Harrisville vill.	259	258	258	-0.05%
Hopedale vill.	984	969	969	0.00%
Jewett vill.	784	342	773	-0.19%
New Athens vill.	342	774	342	0.00%
Scio vill.	799	761	763	-0.63%
The remaining of Harrison County	8,347	8,073	8,065	-0.50%

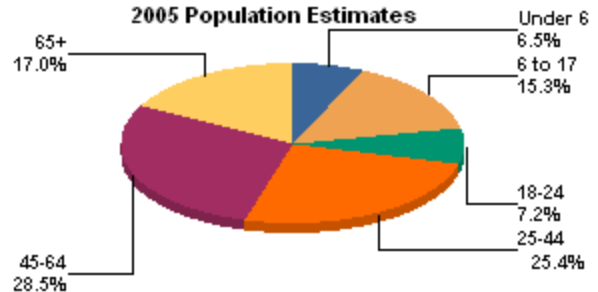
	Total Population	Population Under 5	Population 5-13	Population 14-17
1980 Census	18,152	Not Available		
1990 Census	16,085	Not Available		
2000 Census	15,856	914 5.8%	1,867 11.8%	866 5.5%
2001 Estimate	15,733	886 5.6%	1,825 11.6%	828 5.3%
2002 Estimate	15,777	895 5.7%	1,794 11.4%	815 5.2%
2003 Estimate	15,805	903 5.7%	1,747 11.1%	847 5.4%
2004 Estimate	15,602	849 5.4%	1,698 10.9%	868 5.6%
2005 Estimate	15,589	864 5.5%	1,645 10.6%	888 5.7%
2006 Estimate	15,481	844 5.5%	1,606 10.4%	876 5.7%
2007 Estimate	15,482	858 5.5%	1,608 10.4%	825 5.3%
2008 Estimate	15,387	850 5.5%	1,604 10.4%	775 5.0%



2000 Population Percent by Age ²



2005 Population Estimates ²



	2000 Census	2006 Estimate	2007 Estimate	Average Annual Rate of Change
Archer twp	306	296	295	-0.50%
Athens twp	520	514.0	514	-0.16%
Cadiz twp	3,639	3,633	3,630	-0.05%
Franklin twp	641	638	638	-0.06%
Freeport twp	763	749	748	-0.27%
German twp	767	735	734	-0.60%
Green twp	1,898	1,866	1,866	-0.23%
Monroe twp	1,241	1,214	1,213	-0.31%
Moorefield twp	420	403	403	-0.57%
North twp	1,652	1,582	1,583	-0.59%
Nottingham twp	392	375	375	-0.47%
Rumley twp	1,575	1,537	1,535	-0.35%
Short Creek twp	1,012	984	984	-0.39%
Stock twp	432	415	414	-0.59%
Washington twp	598	575	574	-0.56%

Income and Employment Support 2007 ⁴

	Harrison County	Ohio
Dependency Rate	29.7%	17.1%
Food Stamps	20.9%	14.7%
OWF cash assistance	3.2%	3.0%

Workforce Investment Act

	Harrison County	Ohio
Adult employment rate	100.0%	78.5%
Adult retention rate	90.9%	86.2%
Youth placement rate	50.0%	62.6%

Family Poverty and Employment ¹⁵

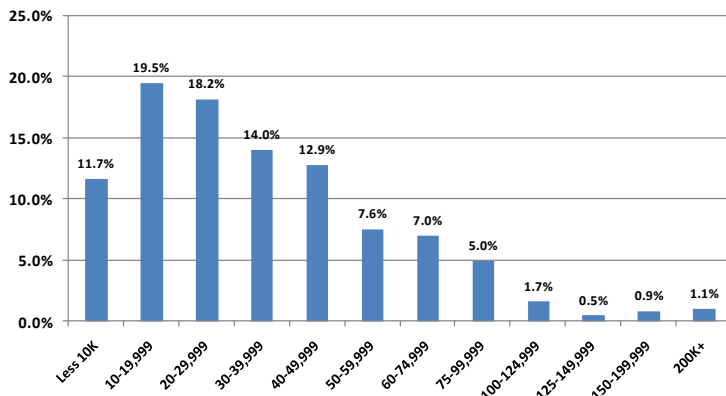
Poverty Status: Percent of total families in poverty (2000 Census)

Married Couples	62.0%
Male householder	6.4%
Female householder	31.6%

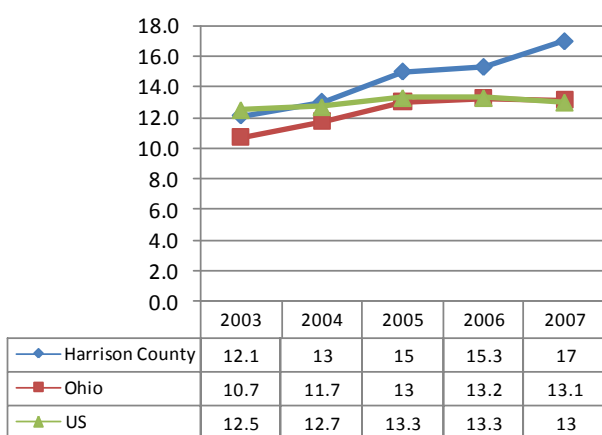
Poverty Status: Percent of total families in poverty (2000 Census)

Total Families	4,521	100%
Married couples, both in labor force	1,650	36.5%
Married couples, husband in labor force	1,054	23.3%
Married couples, wife in labor force	282	6.2%
Married couples not in labor force	869	19.2%
Male householder, in labor force	129	2.9%
Male householder not in labor force	67	1.5%
Female householder, in labor force	286	6.3%
Female householder not in labor force	184	4.1%

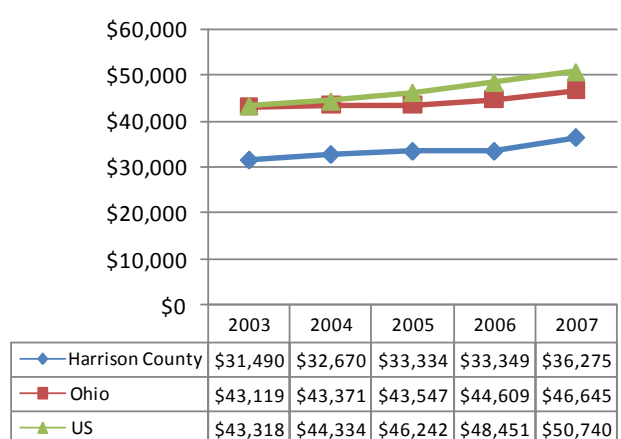
Percent of Population by Household Income ³
2000 Census



Poverty Rate ⁵



Median Household Income ⁵



Housing Units (2000 Census) ⁶

Total Housing Units	6,398
Owner occupied	64.5%
Renter occupied	18.8%
Vacant	16.7%
Median gross income as percentage of household income	25.5%
Median monthly owner's cost for housing with a mortgage as a percentage of household income	18.6%

Total Housing Units ⁶			
Cities and Townships with Villages	2000 Census	2005 Census	2006 Estimate
Harrison Co	7,680	7,786	7,767
Archer township	147	147	147
Athens township	231	237	236
Cadiz township	1,683	1,741	1,737
Franklin township	436	450	449
Freeport township	382	389	388
German township	347	345	344
Green township	775	790	788
Monroe township	562	569	567
Moorefield township	261	260	259
North township	804	798	796
Nottingham township	306	306	306
Rumley township	658	665	663
Short Creek township	472	476	475
Stock township	282	280	280
Washington township	334	333	332

Educational Attainment ^{7, 11}	2000 Census Percent	2007 Estimates	2000 Census State	2000 Census National
Population 25 years and over	100.0%	n/a	100.0%	100.0%
Less than 9th grade	6.6%	n/a	4.5%	7.5%
9th to 12th grade	13.9%	n/a	12.6%	12.1%
High school or equivalent	49.6%	n/a	36.1%	28.6%
Some college, no degree	14.6%	n/a	19.9%	21.0%
Associate's degree	6.3%	n/a	5.9%	6.3%
Bachelor's degree	6.0%	n/a	13.7%	15.5%
Graduate or professional degree	3.0%	n/a	7.4%	8.9%

School Enrollment ^{7, 11}	2000 Census	2007 Estimate
Population 3 years and over enrolled in school	3343	n/a
Nursery school, preschool	201	n/a
Kindergarten	199	n/a
Elementary school (grades 1-8)	1,708	n/a
High School (grades 9-12)	843	n/a
College or graduate school	392	n/a

Kindergarten Readiness Assessment-Literacy Scores-Fall 2007 ¹⁶

District Name	Count of Test Takers fall 2007	Average Score Fall 2007	Percent Band 1 (Scores 0-13)	Percent Band 2 (Scores 14-23)	Percent Band 3 (Scores 24-29)
Conotton Valley Union Local SD	43	16.3	30.2	58.1	11.6
Harrison Hills City SD	140	17.1	31.4	45.7	22.9
State	122,786	19.7	21.8	40.6	37.6

Anemia Indicators Children Aged < 5 Years ¹³

	Number	Percent	Rank
Harrison County	415	10.40	40

Prevalence Of Overweight and At Risk Of Overweight Among Ohio Third Graders, 2004-5* ¹⁴

Percent overweight and at risk of overweight	Percent overweight
39.0% (35.1-43.0)	25.4% (17.5-35.2)

* Confidence Interval 95 percent

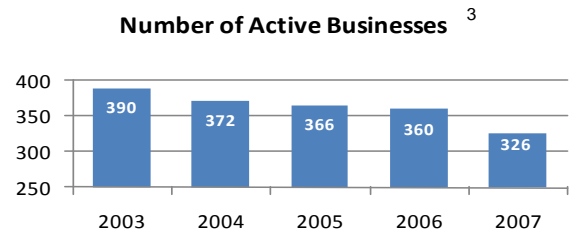
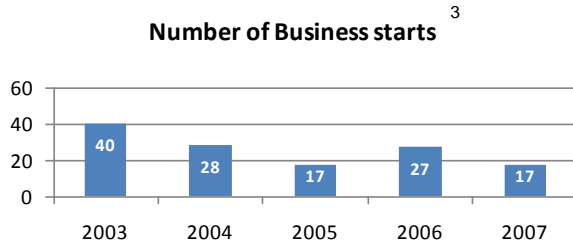
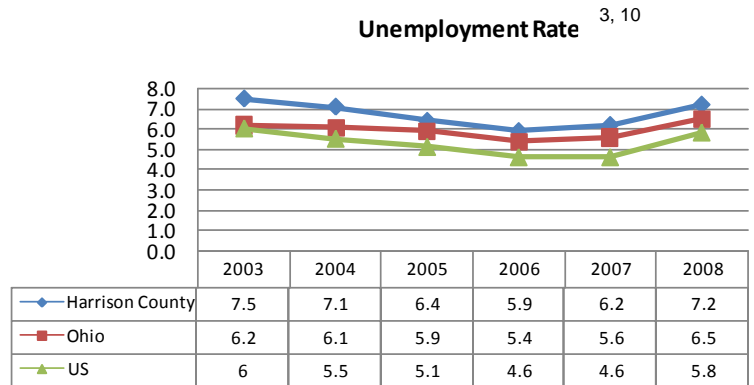
Childcare Services ⁴

	2006	2007
Number of Children Using Publicly Funded Child Care (Unduplicated Count)	125	108
Public Funds Used for Child Care Expenditures	\$178,021	\$164,283
Annual Average Expenditures per Child	\$1,424	\$1,521

Childcare Providers

	2006	2007
Number of Licensed Child Care Centers	3	3

Major Employers by Industry 3	
Harrison County Government Harrison Hills City Bd of Ed	Govt
Freeport Press Inc McDonough Corp/L J Smith Saint-Gobain/Bayform	Mfg
CamOhio LLC	Mining
Carriage Inn of Cadiz Gables Care Center Harrison Community Hospital	Serv

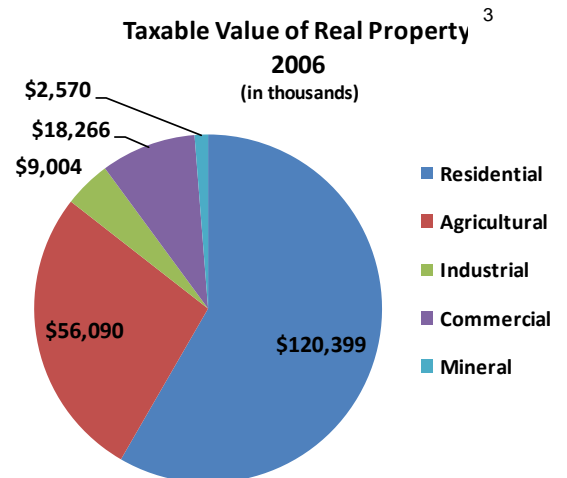


8

Number of workers 16+ years of age living in Harrison County 6,585			Number of workers 16+ years of age working in Harrison County 4,416		
Commute Out To	Number	Percent	Commute In From	Number	Percent
Tuscarawas Co. OH	1,410	21.4%	Jefferson Co. OH	383	8.7%
Jefferson Co. OH	593	9.0%	Belmont Co. OH	280	6.3%
Belmont Co. OH	361	5.5%	Tuscarawas Co. OH	182	4.1%
Stark Co. OH	292	4.4%	Carroll Co. OH	160	3.6%
Carroll Co. OH	188	2.9%	Guemsey Co. OH	52	1.2%
Ohio Co. WV	83	1.3%	Holmes Co. OH	41	0.9%
Brooke Co. WV	65	1.0%	Stark Co. OH	27	0.6%
Wayne Co. OH	62	0.9%	Brooke Co. WV	18	0.4%
Holmes Co. OH	34	0.5%	Allegheny Co. PA	13	0.3%
Allegheny Co. PA	33	0.5%	Hamilton Co. OH	12	0.3%

Regional Commuting Patterns ⁸

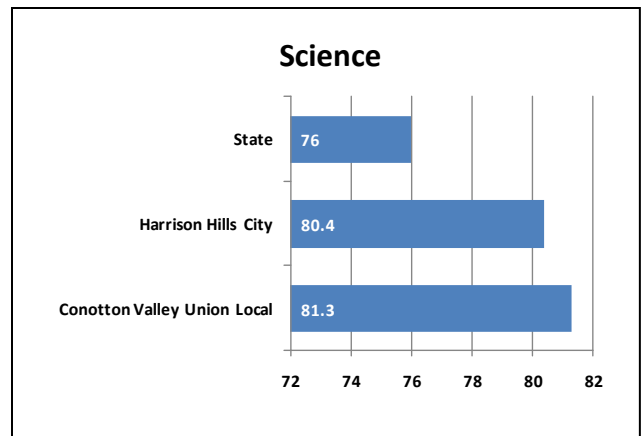
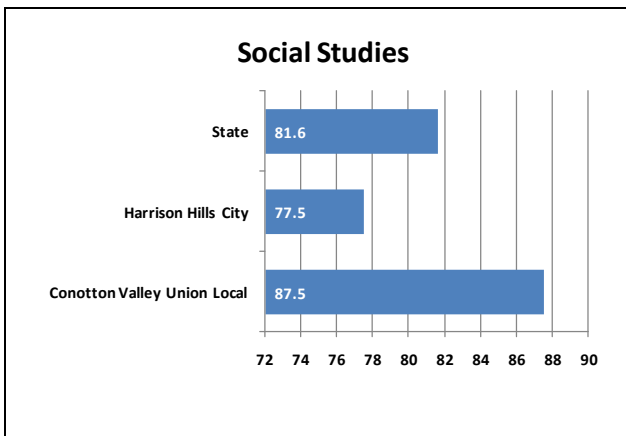
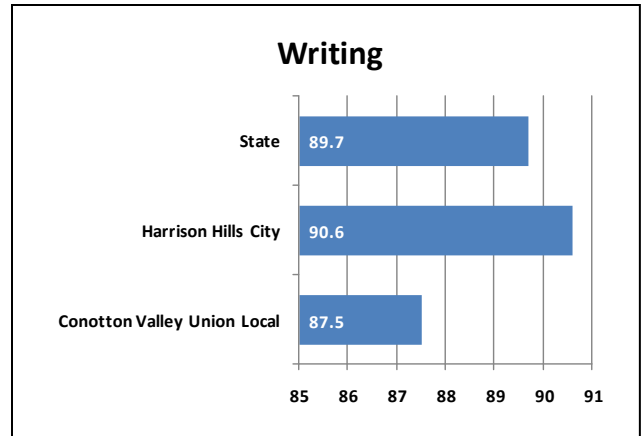
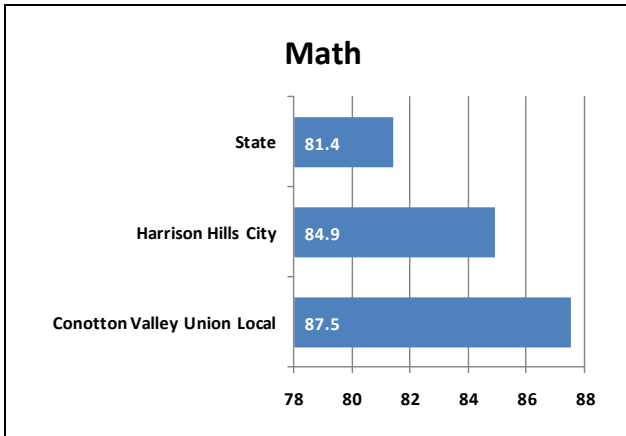
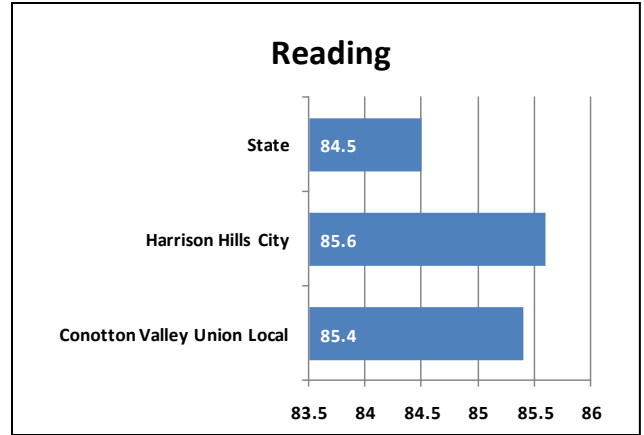
Number of workers living in county	6,585
Number of workers working in county	4,416
Net worker flow	-2,169
Percent who commute out	52.4%
Average commute time in minutes	28.8



Employment by Industry ³

Industrial Sector	Number of Establishments		Average Employment	
	2006	Change since 2001	2006	Change since 2001
Private sector	285	-8.9%	2,939	-3.0%
Goods-Producing	75	-8.5%	1,163	-8.8%
Natural Resources and Minin	16	0.0%	352	-9.3%
Construction	43	0.0%	134	-38.2%
Manufacturing	17	-26.1%	677	0.9%
Service-Providing	210	-9.1%	1,777	1.2%
Trade, Transportation and Ut	81	-11.0%	602	-4.4%
Information	4	0.0%	19	-13.6%
Financial Services	18	-14.3%	125	8.7%
Professional and Business S	32	39.1%	113	71.2%
Education and Health Servi	22	-12.0%	579	3.6%
Leisure and Hospitality	33	-5.7%	264	1.5%
Other Services	22	-29.0%	75	-27.2%
Unclassified				
Federal Government			67	0.0%
State Government			30	-3.2%
Local Government			767	-10.4%

2008-2009 Ohio Graduation Test (OGT) ⁹
 District Ranking
 Percent of 10th Graders Proficient of Above



Data Sources:

- ¹ Annual Estimates of the Resident Population by Selected Age Groups and Sex for Counties: April 1, 2000 to July 1, 2008. U.S. Census Bureau. Accessed on May 29, 2009 from <http://www.census.gov/popest/counties/asrh/files/cc-est2008-agesex-39.csv>.
- ² 2007 Population Estimates by County, City Village and Township. Office of Policy, Research and Strategic Planning, Ohio Department of Development, July 2008. Accessed on June 16, 2009 from <http://www.odod.state.oh.us/research/>.
- ³ 2007 Ohio County Profiles, Office of Policy, Research and Strategic Planning, Ohio Department of Development, January 2009. Accessed on June 12, 2009 from <http://www.odod.state.oh.us/research>.
- ⁴ Ohio County Profiles, Ohio Department of Job and Family Services, July 2008. Accessed on June 4, 2009 from <http://jfs.ohio.gov/county>.
- ⁵ 2007 Poverty and Median Income Estimates – Counties. Census Bureau, Small Area Estimates Branch, Release date: 12.2008. Accessed on March 24, 2009 from <http://www.census.gov/did/www/saipe/data/statecounty/data/2007.html>
- ⁶ Estimated Housing Units for Ohio Places, County and County Subdivisions 2000-2006. Office of Policy, Research and Strategic Planning, Ohio Department of Development, September 2007. Accessed on May 26, 2009 from <http://www.odod.state.oh.us/research>.
- ⁷ 2007 Educational Attainment, School Enrollment. U.S. Census Bureau, 2005-2007 American Community Survey 3-Year Estimates. Accessed on February 26, 2009 from <http://factfinder.census.gov>.
- ⁸ Commuting Patterns by County, Office of Policy, Research and Strategic Planning, Ohio Department of Development. Accessed on June 17, 2009 from <http://www.odod.state.oh.us/research/files/P0005.htm>.
- ⁹ Ohio Department of Education, 2007-2008 School Year Report Card, August 2008. Accessed on May 24, 2009 from <http://webapp2.ode.state.oh.us/reportcard/archives/Default.asp>.
- ¹⁰ 2008 Civilian Labor Force Estimates with Unemployment Rate Map, Ohio Department of Job and Family Services, Office of Workforce Development, Bureau of Labor Market Information, March 12, 2009. Accessed on June 4, 2009 from <http://lmi.state.oh.us/laus/laus.html>.
- ¹¹ 2000 Educational Attainment, School Enrollment. U.S. Census Bureau, Census 2000 Summary File 3 (SF 3). Accessed on February 26, 2009 from <http://factfinder.census.gov>.
- ¹² Taxable Value of Real Property by Class of Property and County, Calendar Year 2007, Ohio Department of Taxation, Accessed on June 3, 2008 from http://tax.ohio.gov/divisions/tax_analysis/tax_data_series/tangible_personal_property/pd31/pd31cy07.stm.
- ¹³ Pediatric Nutrition Surveillance Data from WIC Participants in 2005, Ohio Department of Health, Accessed on May 22, 2009 from <http://www.odh.ohio.gov/ASSETS/4698F5F01183460DAE7A79CE5B9D98AB/2002cty.pdf>.
- ¹⁴ A Report on Body Mass Index of Ohio's Third Graders 2004-2005, Ohio Department of Health Division of Family and Community Health Services, Accessed on May 22, 2009 from <http://healthyohioprogram.org/ASSETS/7FBDB7A5C3FB4977A430A1EA46C642D9/bmirept.pdf>.
- ¹⁵ US Census 2000, Summary File 3, Poverty Status in 1999 of Families by Family Type by Presence and Age of Related Children <18 Years, Accessed on 8/3/09.
- ¹⁶ Aggregate Kindergarten Readiness Assessment-Literacy (KRA-L) Data for Fall 2007 District Scores by County, Accessed on 8/3/09 from <http://education.ohio.gov/GD/DocumentManagement/DocumentDownload.aspx?DocumentID=50667>.