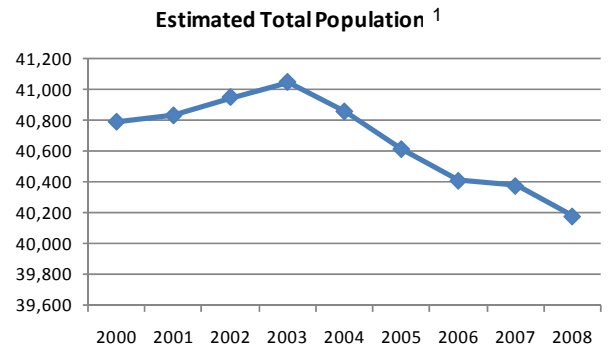


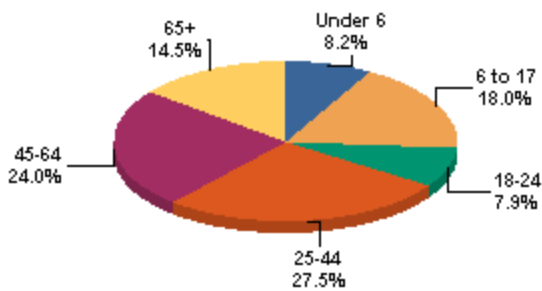


	2000 Census	2006 Estimate	2007 Estimate	Average Annual Rate of Change
Population				
Guernsey County	40,792	40,460	40,409	-0.10%
Byesville vill.	2,574	2,549	2,537	-0.26%
Cambridge city	11,520	11,332	11,280	-0.30%
Cumberland vill.	402	394	392	-0.35%
Fairview vill.	81	80	79	-0.34%
Lore City vill.	305	299	297	-0.37%
Old Washington vill.	265	261	260	-0.26%
Pleasant City vill.	439	431	429	-0.30%
Quaker City vill.	563	152	551	-0.30%
Salesville vill.	154	554	151	-0.27%
Senecaville vill.	453	445	443	-0.31%
The remaining of Guernsey County	23,846	23,963	23,990	-0.02%

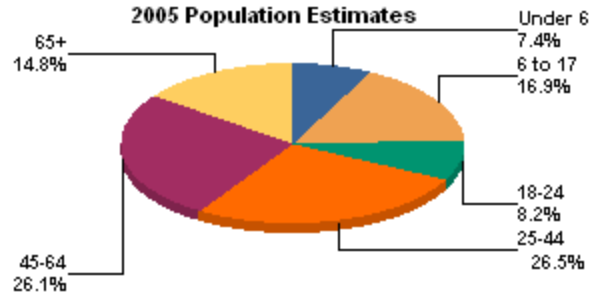
	Total Population	Population Under 5	Population 5-13	Population 14-17
1980 Census	42,024	Not Available		
1990 Census	39,024	Not Available		
2000 Census	40,792	2,748 6.7%	5,415 13.3%	2,512 6.2%
2001 Estimate	40,833	2,673 6.5%	5,363 13.1%	2,486 6.1%
2002 Estimate	40,952	2,653 6.5%	5,283 12.9%	2,458 6.0%
2003 Estimate	41,050	2,633 6.4%	5,211 12.7%	2,456 6.0%
2004 Estimate	40,859	2,560 6.3%	5,108 12.5%	2,472 6.1%
2005 Estimate	40,614	2,507 6.2%	4,985 12.3%	2,419 6.0%
2006 Estimate	40,409	2,451 6.1%	4,908 12.1%	2,379 5.9%
2007 Estimate	40,375	2,482 6.1%	4,796 11.9%	2,353 5.8%
2008 Estimate	40,177	2,484 6.2%	4,732 11.8%	2,243 5.6%



2000 Population Percent by Age ²



2005 Population Estimates ²



	2000 Census	2006 Estimate	2007 Estimate	Average Annual Rate of Change
Adams twp	2,019	2,949	3,105	6.12%
Cambridge twp	15,505	15,132.0	15,063	-0.40%
Center twp	1,779	1,695	1,685	-0.75%
Jackson twp	5,399	5,270	5,240	-0.41%
Jefferson twp	94	90	89	-0.75%
Knox twp	532	512	509	-0.61%
Liberty twp	1,068	1,007	1,001	-0.89%
Londonderry twp	738	703	698	-0.77%
Madison twp	855	807	801	-0.90%
Millwood twp	1,318	1,306	1,298	-0.21%
Monroe twp	598	565	562	-0.85%
Oxford twp	677	643	638	-0.82%
Richland twp	2,033	1,973	1,963	-0.48%
Spencer twp	1,058	1,013	1,006	-0.69%
Valley twp	2,378	2,270	2,256	-0.72%
Washington twp	491	462	459	-0.93%
Westland twp	1,931	1,855	1,844	-0.63%
Wheeling twp	752	710	705	-0.89%
Wills twp	1,567	1,498	1,487	-0.72%

Income and Employment Support 2007 ⁴
Guernsey County Ohio

Dependency Rate	28.9%	17.1%
Food Stamps	24.3%	14.7%
OWF cash assistance	1.6%	3.0%

Workforce Investment Act

Adult employment rate	80.5%	78.5%
Adult retention rate	88.1%	86.2%
Youth placement rate	44.1%	62.6%

Family Poverty and Employment ¹⁵

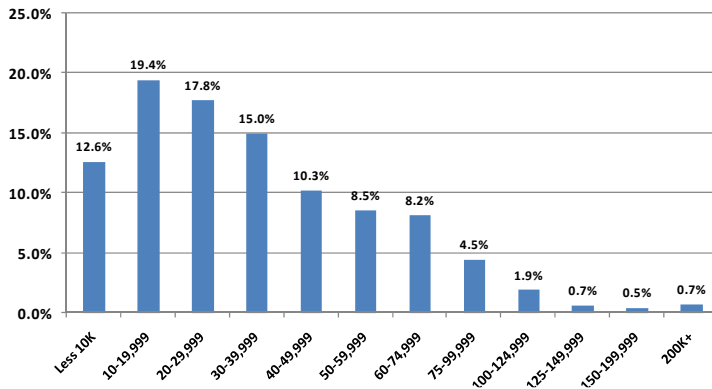
Poverty Status: Percent of total families in poverty (2000 Census)

Married Couples	47.4%
Male householder	11.5%
Female householder	41.1%

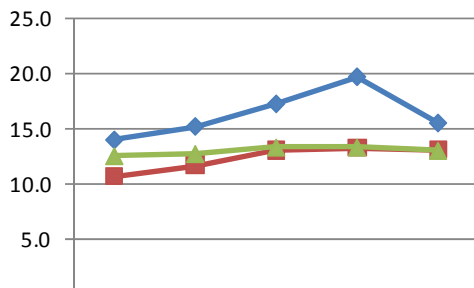
Poverty Status: Percent of total families in poverty (2000 Census)

Total Families	11,307	100%
Married couples, both in labor force	4,053	35.8%
Married couples, husband in labor force	2,207	19.5%
Married couples, wife in labor force	587	5.2%
Married couples not in labor force	1,919	17.0%
Male householder, in labor force	540	4.8%
Male householder not in labor force	191	1.7%
Female householder, in labor force	1,129	10.0%
Female householder not in labor force	681	6.0%

Percent of Population by Household Income ³
2000 Census

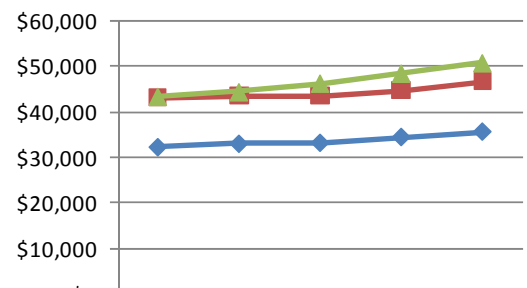


Poverty Rate ⁵



Guernsey County	14	15.2	17.2	19.6	15.5
Ohio	10.7	11.7	13	13.2	13.1
US	12.5	12.7	13.3	13.3	13

Median Household Income ⁵



Guernsey County	\$32,165	\$32,909	\$33,131	\$34,411	\$35,599
Ohio	\$43,119	\$43,371	\$43,547	\$44,609	\$46,645
US	\$43,318	\$44,334	\$46,242	\$48,451	\$50,740

Housing Units (2000 Census) ⁶

Total Housing Units	16,094
Owner occupied	62.9%
Renter occupied	22.8%
Vacant	14.3%
Median gross income as percentage of household income	24.4%
Median monthly owner's cost for housing with a mortgage as a percentage of household income	19.6%

Educational Attainment 7, 11	2000 Census Percent	2007 Estimates	2000 Census State	2000 Census National
Population 25 years and over	100.0%	100.0%	100.0%	100.0%
Less than 9th grade	6.2%	5.9%	4.5%	7.5%
9th to 12th grade	15.4%	12.0%	12.6%	12.1%
High school or equivalent	46.2%	45.0%	36.1%	28.6%
Some college, no degree	16.7%	17.4%	19.9%	21.0%
Associate's degree	5.5%	8.7%	5.9%	6.3%
Bachelor's degree	6.1%	6.2%	13.7%	15.5%
Graduate or professional degree	4.0%	4.9%	7.4%	8.9%

Total Housing Units ⁶

Cities and Townships with Villages	2000 Census	2005 Census	2006 Estimate
Guernsey Co	18,771	19,542	19,565
Adams township	753	1,101	1,170
Cambridge township	7,312	7,535	7,516
Center township	797	806	804
Jackson township	2,333	2,407	2,402
Jefferson township	67	68	68
Knox township	230	235	234
Liberty township	482	484	483
Londonderry township	459	464	463
Madison township	420	421	420
Millwood township	541	567	565
Monroe township	331	332	331
Oxford township	325	327	326
Richland township	1,188	1,219	1,216
Spencer township	456	462	461
Valley township	1,063	1,076	1,073
Washington township	255	255	254
Westland township	733	747	746
Wheeling township	363	364	363
Wills township	663	672	670

School Enrollment 7, 11	2000 Census	2007 Estimate
Population 3 years and over enrolled in school	9866	9323
Nursery school, preschool	608	627
Kindergarten	577	664
Elementary school (grades 1-8)	5,055	4,235
High School (grades 9-12)	2,521	2,517
College or graduate school	1,105	1,280

Kindergarten Readiness Assessment-Literacy Scores-Fall 2007 ¹⁶

District Name	Count of Test Takers fall 2007	Average Score Fall 2007	Percent Band 1 (Scores 0-13)	Percent Band 2 (Scores 14-23)	Percent Band 3 (Scores 24-29)
Cambridge City SD	184	19.2	19.6	51.1	29.4
East Guernsey Local SD	97	17.2	34.0	43.3	22.7
Rolling Hills Local SD	115	19.0	20.0	50.4	29.6
State	122,786	19.7	21.8	40.6	37.6

Anemia Indicators Children Aged < 5 Years ¹³

	Number	Percent	Rank
Guernsey County	1,056	8.00	20

Prevalence Of Overweight and At Risk Of Overweight Among Ohio Third Graders, 2004-5* ¹⁴

Percent overweight and at risk of overweight	Percent overweight
41.7% (33.7-50.2)	24.6% (21.1-28.4)

* Confidence Interval 95 percent

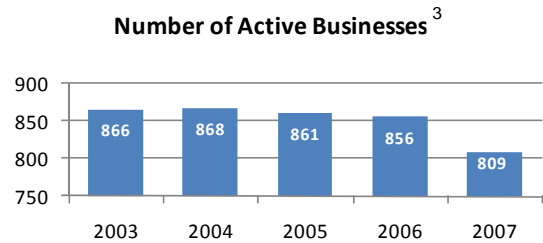
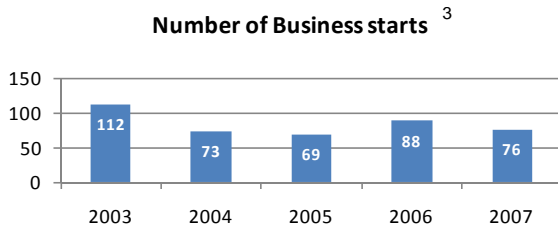
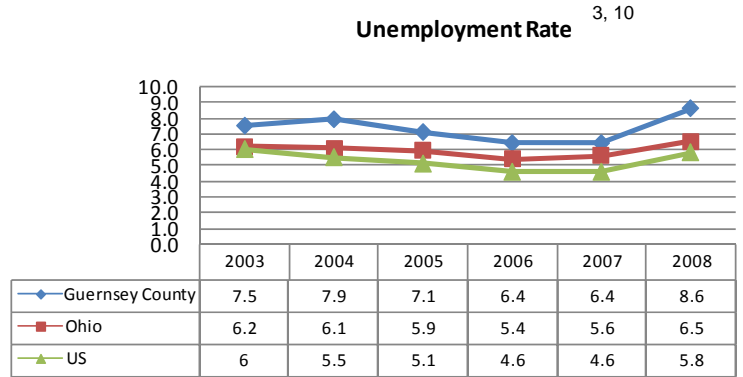
Childcare Services ⁴

	2006	2007
Number of Children Using Publicly Funded Child Care (Unduplicated Count)	769	728
Public Funds Used for Child Care Expenditures	\$1,144,053	\$1,008,885
Annual Average Expenditures per Child	\$1,488	\$1,386

Childcare Providers

Number of Licensed Child Care Centers	12	11
---------------------------------------	----	----

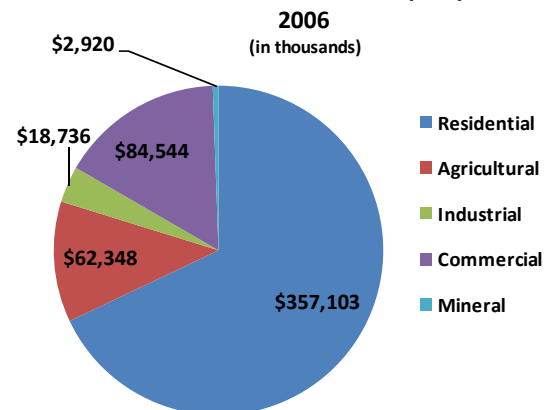
Major Employers by Industry ³	
Cambridge City Bd of Ed	Govt
Guernsey County Government	
State of Ohio	
Colgate-Palmolive Co	Mfg
Daimler AG/Detroit Diesel	
Federal-Mogul Corp	
Southeastern Ohio Reg. Medical Ctr	Serv
Wal-Mart Stores Inc	Trade



Number of workers 16+ years of age living in Guernsey County			Number of workers 16+ years of age working in Guernsey County		
	Number	Percent		Number	Percent
16,644			15,528		
Muskingum Co. OH	1,815	10.9%	Noble Co. OH	1,069	6.9%
Noble Co. OH	438	2.6%	Muskingum Co. OH	793	5.1%
Franklin Co. OH	396	2.4%	Belmont Co. OH	466	3.0%
Belmont Co. OH	318	1.9%	Tuscarawas Co. OH	153	1.0%
Tuscarawas Co. OH	249	1.5%	Coshocton Co. OH	94	0.6%
Coshocton Co. OH	210	1.3%	Monroe Co. OH	84	0.5%
Licking Co. OH	127	0.8%	Washington Co. OH	83	0.5%
Stark Co. OH	88	0.5%	Morgan Co. OH	80	0.5%
Summit Co. OH	81	0.5%	Perry Co. OH	56	0.4%
Cuyahoga Co. OH	52	0.3%	Franklin Co. OH	39	0.3%

8

Taxable Value of Real Property ³



Regional Commuting Patterns ⁸

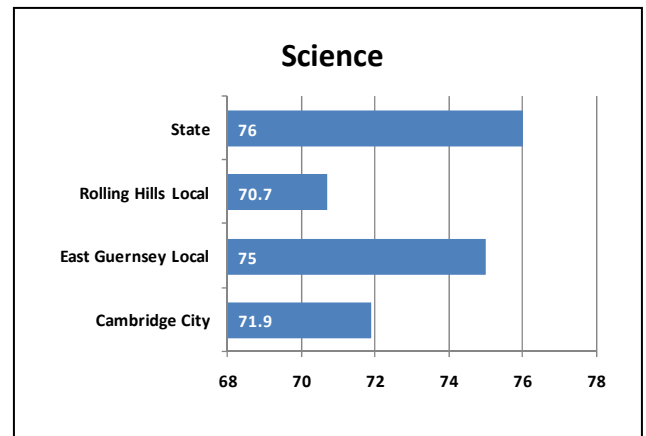
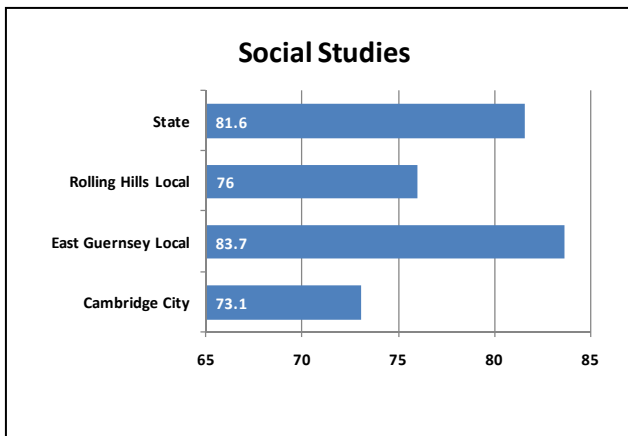
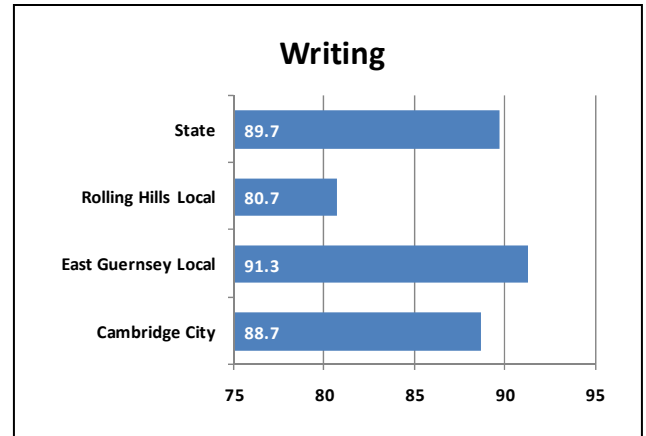
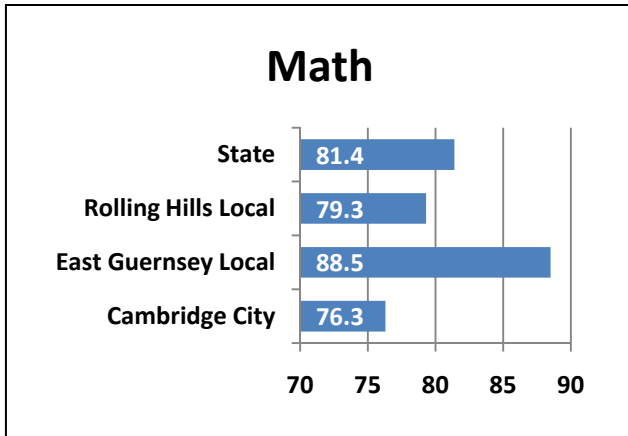
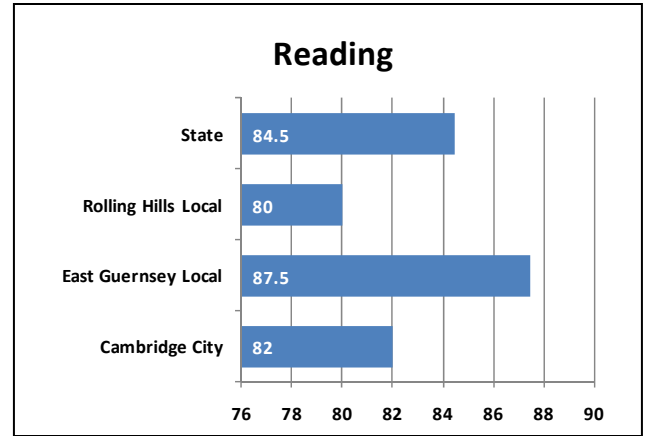
Number of workers living in county	16,644
Number of workers working in county	15,528
Net worker flow	-1116
Percent who commute out	26.4%
Average commute time in minutes	23.7

8

Employment by Industry ³

Industrial Sector	Number of Establishments		Average Employment	
	2006	Change since 2001	2006	Change since 2001
Private sector	868	1.2%	12,234	4.7%
Goods-Producing	153	-1.3%	3,522	7.3%
Natural Resources and Mining	16	-15.8%	143	30.0%
Construction	81	-2.4%	440	-26.4%
Manufacturing	56	7.7%	2,939	14.2%
Service-Providing	715	1.6%	8,712	3.6%
Trade, Transportation and Utilities	225	-3.4%	2,748	5.7%
Information	6	-40.0%	122	-36.5%
Financial Services	85	10.4%	409	11.4%
Professional and Business Services	97	-4.0%	983	-29.3%
Education and Health Services	122	17.3%	2,484	24.3%
Leisure and Hospitality	94	8.0%	1,626	7.9%
Other Services	84	-7.7%	338	-3.7%
Unclassified	2		1	
Federal Government			120	-4.8%
State Government			742	-13.4%
Local Government			1,807	5.4%

2008-2009 Ohio Graduation Test (OGT) ⁹
 District Ranking
 Percent of 10th Graders Proficient of Above



Data Sources:

- ¹ Annual Estimates of the Resident Population by Selected Age Groups and Sex for Counties: April 1, 2000 to July 1, 2008. U.S. Census Bureau. Accessed on May 29, 2009 from <http://www.census.gov/popest/counties/asrh/files/cc-est2008-agesex-39.csv>.
- ² 2007 Population Estimates by County, City Village and Township. Office of Policy, Research and Strategic Planning, Ohio Department of Development, July 2008. Accessed on June 16, 2009 from <http://www.odod.state.oh.us/research/>.
- ³ 2007 Ohio County Profiles, Office of Policy, Research and Strategic Planning, Ohio Department of Development, January 2009. Accessed on June 12, 2009 from <http://www.odod.state.oh.us/research>.
- ⁴ Ohio County Profiles, Ohio Department of Job and Family Services, July 2008. Accessed on June 4, 2009 from <http://jfs.ohio.gov/county>.
- ⁵ 2007 Poverty and Median Income Estimates – Counties. Census Bureau, Small Area Estimates Branch, Release date: 12.2008 Accessed on March 24, 2009 from <http://www.census.gov/did/www/saie/data/statecounty/data/2007.html>
- ⁶ Estimated Housing Units for Ohio Places, County and County Subdivisions 2000-2006. Office of Policy, Research and Strategic Planning, Ohio Department of Development, September 2007. Accessed on May 26, 2009 from <http://www.odod.state.oh.us/research>.
- ⁷ 2007 Educational Attainment, School Enrollment. U.S. Census Bureau, 2005-2007 American Community Survey 3-Year Estimates. Accessed on February 26, 2009 from <http://factfinder.census.gov>.
- ⁸ Commuting Patterns by County, Office of Policy, Research and Strategic Planning, Ohio Department of Development. Accessed on June 17, 2009 from <http://www.odod.state.oh.us/research/files/P0005.htm>.
- ⁹ Ohio Department of Education, 2007-2008 School Year Report Card, August 2008. Accessed on May 24, 2009 from <http://webapp2.ode.state.oh.us/reportcard/archives/Default.asp>.
- ¹⁰ 2008 Civilian Labor Force Estimates with Unemployment Rate Map, Ohio Department of Job and Family Services, Office of Workforce Development, Bureau of Labor Market Information, March 12, 2009. Accessed on June 4, 2009 from <http://lmi.state.oh.us/laus/laus.html>.
- ¹¹ 2000 Educational Attainment, School Enrollment. U.S. Census Bureau, Census 2000 Summary File 3 (SF 3). Accessed on February 26, 2009 from <http://factfinder.census.gov>.
- ¹² Taxable Value of Real Property by Class of Property and County, Calendar Year 2007, Ohio Department of Taxation, Accessed on June 3, 2008 from http://tax.ohio.gov/divisions/tax_analysis/tax_data_series/tangible_personal_property/pd31/pd31cy07.stm.
- ¹³ Pediatric Nutrition Surveillance Data from WIC Participants in 2005, Ohio Department of Health, Accessed on May 22, 2009 from <http://www.odh.ohio.gov/ASSETS/4698F5F01183460DAE7A79CE5B9D98AB/2002cty.pdf>.
- ¹⁴ A Report on Body Mass Index of Ohio's Third Graders 2004-2005, Ohio Department of Health Division of Family and Community Health Services, Accessed on May 22, 2009 from <http://healthyohioprogram.org/ASSETS/7FBDB7A5C3FB4977A430A1EA46C642D9/bmirept.pdf>.
- ¹⁵ US Census 2000, Summary File 3, Poverty Status in 1999 of Families by Family Type by Presence and Age of Related Children <18 Years, Accessed on 8/3/09.
- ¹⁶ Aggregate Kindergarten Readiness Assessment-Literacy (KRA-L) Data for Fall 2007 District Scores by County, Accessed on 8/3/09 from <http://education.ohio.gov/GD/DocumentManagement/DocumentDownload.aspx?DocumentID=50667>.