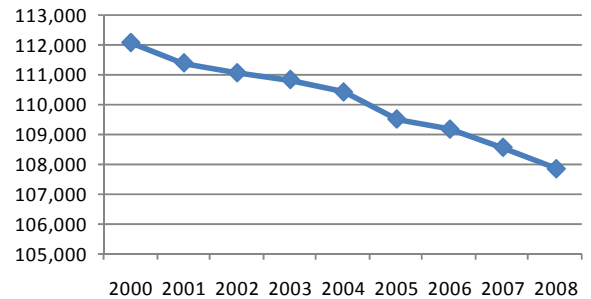


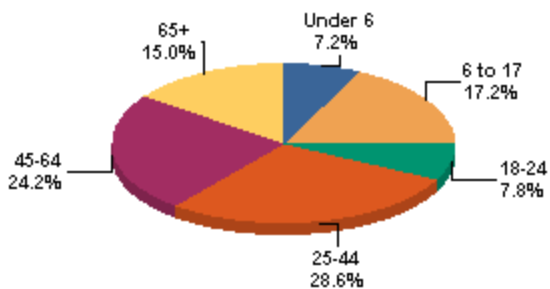
Population	2000 Census	2006 Estimate	2007 Estimate	Average Annual Rate of Change
Columbiana County	112,07	109,27	108,698	-0.40%
Columbiana city	5,273	5,509	5,599	0.79%
East Liverpool city	13,089	12,194	12,103	-1.11%
East Palestine city	4,917	4,745	4,714	-0.64%
Hanoverton vill.	387	384	381	-0.32%
Leetonia vill.	2,043	2,017	2,006	-0.13%
Lisbon vill.	2,788	3,034	3,011	-0.52%
Minerva vill.	5	6	6	2.60%
New Waterford vill.	1,391	1,369	1,358	-0.33%
Rogers vill.	266	257	254	-0.63%
Salem city	12,197	11,871	11,835	-0.69%
Salineville vill.	1,397	1,342	1,331	-0.67%
Summitville vill.	108	105	104	-0.52%
Washingtonville vill.	434	417	413	-0.68%
Wellsville vill.	4,133	3,965	3,932	-0.69%
The remaining of Columbiana County	63,647	62,059	61,651	-0.30%

	Total Population	Population Under 5	Population 5-13	Population 14-17
1980 Census	113,572	Not Available		
1990 Census	108,276	Not Available		
2000 Census	112,075	6,618 5.9%	13,944 12.4%	6,706 6.0%
2001 Estimate	111,398	6,526 5.9%	13,496 12.1%	6,673 6.0%
2002 Estimate	111,069	6,488 5.8%	13,152 11.8%	6,646 6.0%
2003 Estimate	110,844	6,326 5.7%	12,953 11.7%	6,505 5.9%
2004 Estimate	110,429	6,261 5.7%	12,633 11.4%	6,346 5.7%
2005 Estimate	109,529	6,112 5.6%	12,195 11.1%	6,278 5.7%
2006 Estimate	109,191	6,042 5.5%	11,972 11.0%	6,186 5.7%
2007 Estimate	108,587	5,983 5.5%	11,681 10.8%	6,091 5.6%
2008 Estimate	107,873	5,935 5.5%	11,382 10.6%	5,907 5.5%

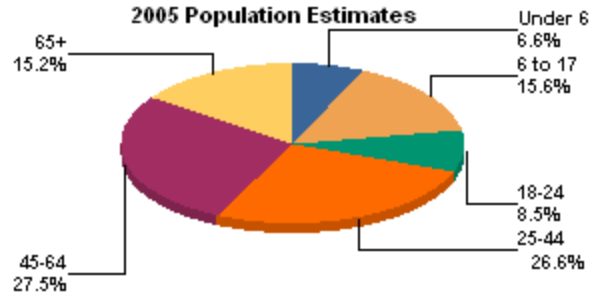
Estimated Total Population 1



2000 Population Percent by Age



2005 Population Estimates



	2000 Census	2006 Estimate	2007 Estimate	Average Annual Rate of Change
Butler twp	3,444	3,396	3,371	-0.30%
Center twp	6,473	6,337.0	6,292	-0.39%
Elkrun twp	4,781	4,800	4,781	0.00%
Fairfield twp	9,583	9,766	9,856	0.39%
Franklin twp	766	760	753	-0.24%
Hanover twp	3,749	3,724	3,694	-0.20%
Knox twp	4,828	4,717	4,680	-0.43%
Liverpool twp	4,374	4,218	4,185	-0.49%
Madison twp	3,406	3,333	3,307	-0.41%
Middleton twp	3,741	3,602	3,570	-0.64%
Perry twp	17,049	16,498	16,440	-0.50%
St. Clair twp	7,961	7,752	7,700	-0.46%
Salem twp	5,703	5,614	5,575	-0.31%
Unity twp	10,294	10,064	9,994	-0.41%
Washington twp	2,380	2,311	2,291	-0.52%
Wayne twp	785	781	775	-0.18%
West twp	3,351	3,293	3,268	-0.35%
Yellow Creek twp	2,185	2,149	2,131	-0.34%

**Income and Employment Support 2007 <sup>4</sup>**  
Columbiana County Ohio

Dependency Rate	25.7%	17.1%
Food Stamps	18.0%	14.7%
OWF cash assistance	1.8%	3.0%

**Workforce Investment Act**

Adult employment rate	86.8%	78.5%
Adult retention rate	94.3%	86.2%
Youth placement rate	44.8%	62.6%

**Family Poverty and Employment <sup>15</sup>**

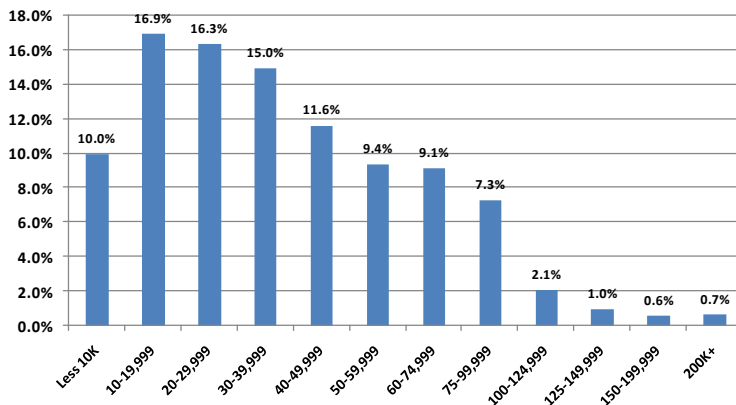
Poverty Status: Percent of total families in poverty (2000 Census)

Married Couples	44.4%
Male householder	10.8%
Female householder	44.7%

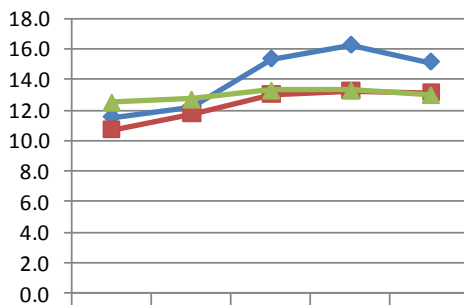
Poverty Status: Percent of total families in poverty (2000 Census)

Total Families	30,877	100%
Married couples, both in labor force	12,520	40.5%
Married couples, husband in labor force	5,838	18.9%
Married couples, wife in labor force	1,714	5.6%
Married couples not in labor force	4,937	16.0%
Male householder, in labor force	1,312	4.2%
Male householder not in labor force	359	1.2%
Female householder, in labor force	2,832	9.2%
Female householder not in labor force	1,365	4.4%

Percent of Population by Household Income <sup>3</sup>  
2000 Census

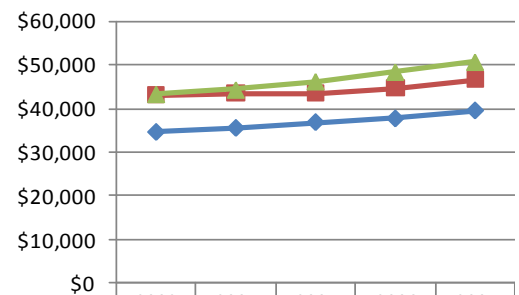


Poverty Rate <sup>5</sup>



—●— Columbiana County	11.5	12.2	15.3	16.2	15.1
—■— Ohio	10.7	11.7	13	13.2	13.1
—▲— US	12.5	12.7	13.3	13.3	13

Median Household Income <sup>5</sup>



—●— Columbiana County	\$34,732	\$35,644	\$36,949	\$37,776	\$39,580
—■— Ohio	\$43,119	\$43,371	\$43,547	\$44,609	\$46,645
—▲— US	\$43,318	\$44,334	\$46,242	\$48,451	\$50,740

**Housing Units (2000 Census) <sup>6</sup>**

Total Housing Units	42,973
Owner occupied	70.9%
Renter occupied	22.4%
Vacant	6.7%
Median gross income as percentage of household income	23.7%
Median monthly owner's cost for housing with a mortgage as a percentage of household income	20.3%

**Total Housing Units <sup>6</sup>**

Cities and Townships with Villages	2000 Census	2005 Census	2006 Estimate
<b>Columbiana Co</b>	<b>46,083</b>	<b>46,983</b>	<b>47,050</b>
Butler township	1,370	1,414	1,413
Center township	2,638	2,823	2,819
East Liverpool city	5,753	5,598	5,583
Elkrun township	890	937	937
Fairfield township	4,085	4,287	4,370
Franklin township	329	341	341
Hanover township	1,711	1,776	1,777
Knox township	1,898	1,941	1,939
Liverpool township	1,903	1,937	1,934
Madison township	1,362	1,393	1,393
Middleton township	1,507	1,520	1,518
Perry township	7,515	7,576	7,592
St. Clair township	3,296	3,358	3,355
Salem township	2,226	2,291	2,292
Unity township	4,280	4,370	4,373
Washington township	1,006	1,022	1,021
Wayne township	315	327	328
Wellsville village	1,869	1,881	1,875
West township	1,212	1,246	1,246
Yellow Creek township	918	945	944

**Anemia Indicators Children Aged < 5 Years <sup>13</sup>**

	Number	Percent	Rank
Columbiana County	1,424	8.60	32

**Prevalence Of Overweight and At Risk Of Overweight Among Ohio Third Graders, 2004-5\* <sup>14</sup>**

Percent overweight and at risk of overweight	Percent overweight
35.8% (22.0-52.4)	22.6% (10.9-41.1)

\* Confidence Interval 95 percent

	2000 Census Percent	2007 Estimates	2000 Census State	2000 Census National
<b>Educational Attainment <sup>7,11</sup></b>				
<b>Population 25 years and over</b>	<b>100.0%</b>	<b>100.0%</b>	<b>100.0%</b>	<b>100.0%</b>
Less than 9th grade	5.1%	3.3%	4.5%	7.5%
9th to 12th grade	14.3%	12.4%	12.6%	12.1%
High school or equivalent	47.6%	47.8%	36.1%	28.6%
Some college, no degree	17.2%	16.8%	19.9%	21.0%
Associate's degree	5.0%	8.5%	5.9%	6.3%
Bachelor's degree	7.4%	7.4%	13.7%	15.5%
Graduate or professional degree	3.3%	3.9%	7.4%	8.9%

School Enrollment <sup>7,11</sup>	2000 Census	2007 Estimate
<b>Population 3 years and over enrolled in school</b>	<b>26,376</b>	<b>24,358</b>
Nursery school, preschool	1,733	1,560
Kindergarten	1,344	747
Elementary school (grades 1-8)	12,976	11,421
High School (grades 9-12)	6,802	6,227
College or graduate school	3,521	4,403

**Kindergarten Readiness Assessment-Literacy Scores-Fall 2007 <sup>16</sup>**

District Name	Count of Test Takers fall 2007	Average Score Fall 2007	Percent Band 1 (Scores 0-13)	Percent Band 2 (Scores 14-23)	Percent Band 3 (Scores 24-29)
Beaver Local SD	173	19.4	20.8	44.5	34.7
Buckeye On-Line School	27	20.8	14.8	44.4	40.7
Columbiana Ex Vill SD	70	24.8	7.1	18.6	74.3
Crestview Local SD	78	20.2	11.5	53.9	34.6
East Liverpool City SD	194	18.4	28.9	38.1	33.0
East Palestine City SD	97	23.4	5.2	34.0	60.8
Leetonia Schools Ex Vill SD	53	19.3	22.6	47.2	30.2
Lisbon Ex Vill SD	54	20.9	11.1	55.6	33.3
Salem City SD	151	18.4	27.8	43.7	28.5
Southern Local SD	75	17.0	26.7	56.0	17.3
United Local SD	87	21.3	11.5	42.5	46.0
Wellsville Local SD	66	19.8	18.2	48.5	33.3
<b>State</b>	<b>122,786</b>	<b>19.7</b>	<b>21.8</b>	<b>40.6</b>	<b>37.6</b>

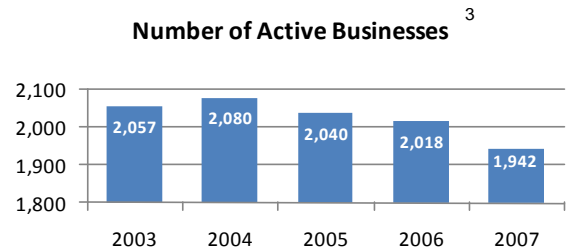
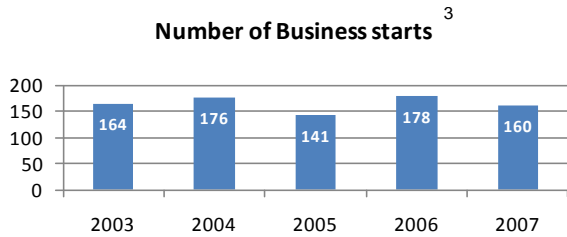
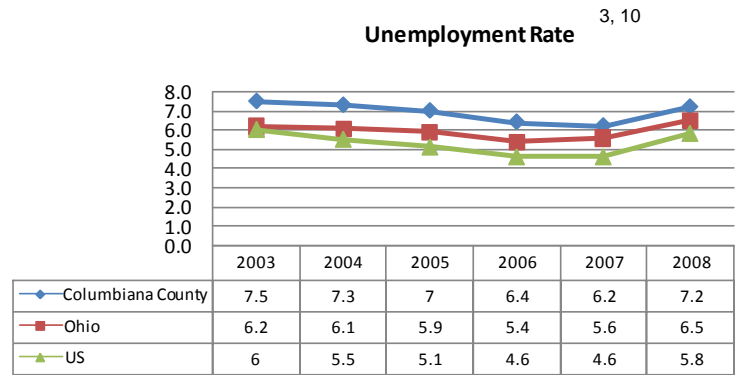
**Childcare Services <sup>4</sup>**

	2006	2007
Number of Children Using Publicly Funded Child Care (Unduplicated Count)	1,826	1,899
Public Funds Used for Child Care Expenditures	\$558,762,58	\$4,922,836
Annual Average Expenditures per Child	\$2,819	\$2,592

**Childcare Providers**

	2006	2007
Number of Licensed Child Care Centers	37	35

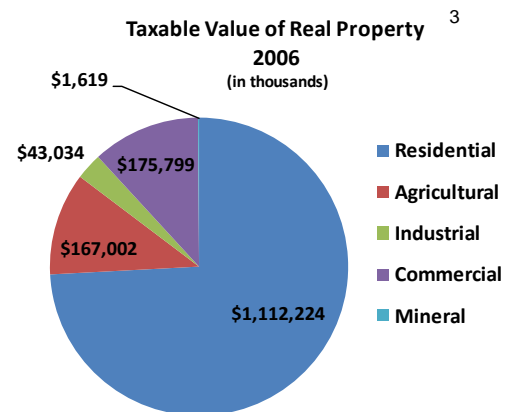
Major Employers by Industry 3	
Columbiana County Government East Liverpool City Bd of Ed Salem City Bd of Ed	Govt
Bain Capital/American Standard Inc Flex-N-Gate LLC Fresh Mark Inc	Mfg
Salem Community Hospital East Liverpool City Hospital	Serv
Wal-Mart Stores Inc	Trade



Number of workers 16+ years of age living in Columbiana County 49,461			Number of workers 16+ years of age working in Columbiana County 37,705		
Commute Out To	Number	Percent	Commute In From	Number	Percent
Mahoning Co. OH	7,371	14.9%	Mahoning Co. OH	3,684	9.8%
Stark Co. OH	3,306	6.7%	Hancock Co. WV	831	2.2%
Beaver Co. PA	1,889	3.8%	Stark Co. OH	640	1.7%
Trumbull Co. OH	1,719	3.5%	Jefferson Co. OH	632	1.7%
Hancock Co. WV	1,488	3.0%	Beaver Co. PA	443	1.2%
Allegheny Co. PA	735	1.5%	Trumbull Co. OH	344	0.9%
Jefferson Co. OH	517	1.0%	Carroll Co. OH	297	0.8%
Summit Co. OH	464	0.9%	Portage Co. OH	182	0.5%
Carroll Co. OH	453	0.9%	Lawrence Co. PA	152	0.4%
Portage Co. OH	316	0.6%	Allegheny Co. PA	88	0.2%

8

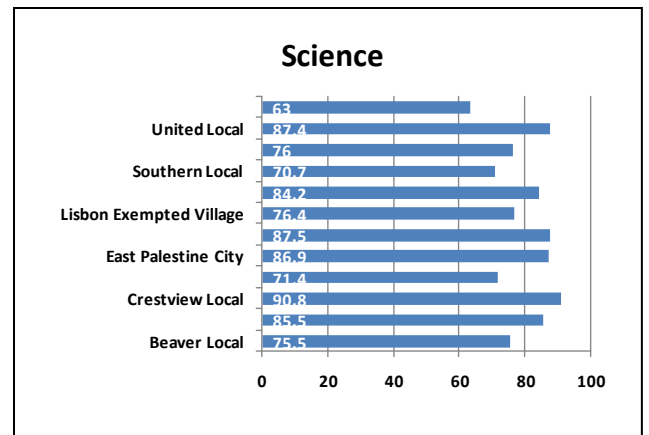
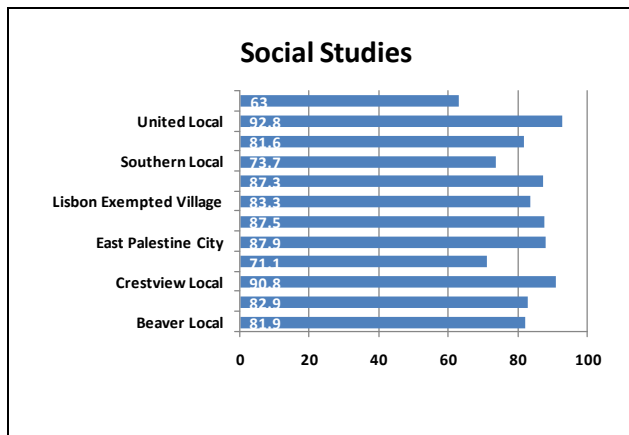
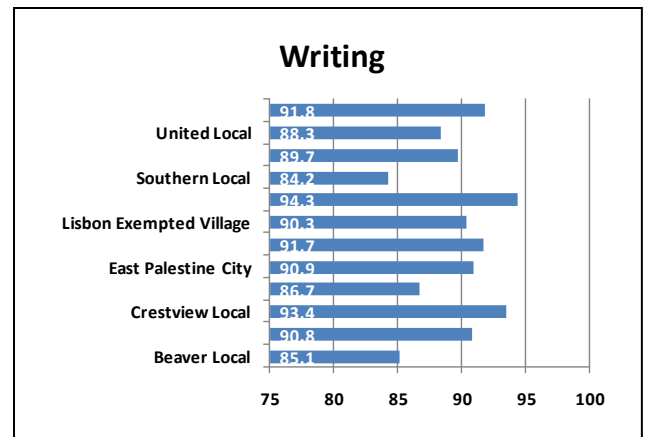
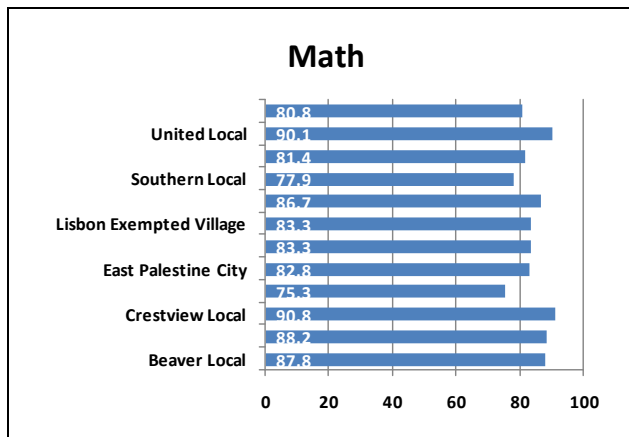
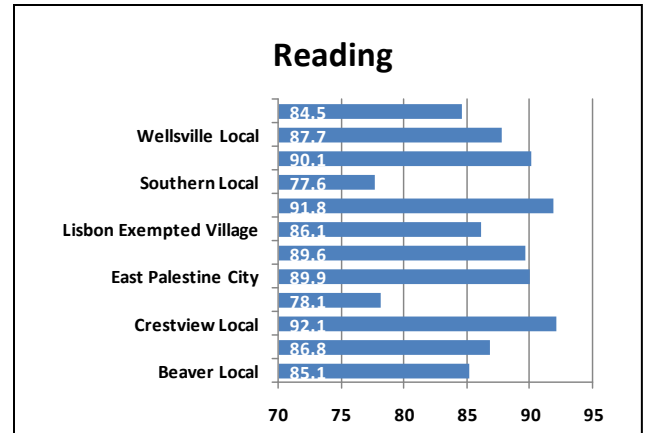
Regional Commuting Patterns	
Number of workers living in county	49,461
Number of workers working in county	37,705
Net worker flow	-11756
Percent who commute out	39.5%
Average commute time in minutes	22.7



Employment by Industry <sup>3</sup>

Industrial Sector	Number of Establishments		Average Employment	
	2006	Change since 2001	2006	Change since 2001
Private sector	2,143	-1.5%	26,911	-5.7%
Goods-Producing	484	-7.6%	7,763	-22.0%
Natural Resources and Mining	33	10.0%	353	18.9%
Construction	242	-6.9%	1,162	-12.6%
Manufacturing	209	-10.7%	6,249	-25.0%
Service-Providing	1,660	0.5%	19,148	3.0%
Trade, Transportation and Utilities	564	-2.1%	6,487	-4.0%
Information	25	0.0%	159	-48.5%
Financial Services	185	5.7%	1,123	18.2%
Professional and Business Services	232	3.1%	2,282	7.5%
Education and Health Services	228	6.0%	5,140	11.4%
Leisure and Hospitality	212	0.5%	2,818	1.1%
Other Services	208	-5.9%	1,127	8.3%
Unclassified	6		14	
Federal Government			566	-6.0%
State Government			341	5.6%
Local Government			4,170	-4.7%

2008-2009 Ohio Graduation Test (OGT) <sup>9</sup>  
District Ranking  
Percent of 10<sup>th</sup> Graders Proficient of Above



## Data Sources:

- <sup>1</sup> Annual Estimates of the Resident Population by Selected Age Groups and Sex for Counties: April 1, 2000 to July 1, 2008. U.S. Census Bureau. Accessed on May 29, 2009 from <http://www.census.gov/popest/counties/asrh/files/cc-est2008-agesex-39.csv>.
- <sup>2</sup> 2007 Population Estimates by County, City Village and Township. Office of Policy, Research and Strategic Planning, Ohio Department of Development, July 2008. Accessed on June 16, 2009 from <http://www.odod.state.oh.us/research/>.
- <sup>3</sup> 2007 Ohio County Profiles, Office of Policy, Research and Strategic Planning, Ohio Department of Development, January 2009. Accessed on June 12, 2009 from <http://www.odod.state.oh.us/research>.
- <sup>4</sup> Ohio County Profiles, Ohio Department of Job and Family Services, July 2008. Accessed on June 4, 2009 from <http://jfs.ohio.gov/county>.
- <sup>5</sup> 2007 Poverty and Median Income Estimates – Counties. Census Bureau, Small Area Estimates Branch, Release date: 12.2008. Accessed on March 24, 2009 from <http://www.census.gov/did/www/saipe/data/statecounty/data/2007.html>
- <sup>6</sup> Estimated Housing Units for Ohio Places, County and County Subdivisions 2000-2006. Office of Policy, Research and Strategic Planning, Ohio Department of Development, September 2007. Accessed on May 26, 2009 from <http://www.odod.state.oh.us/research>.
- <sup>7</sup> 2007 Educational Attainment, School Enrollment. U.S. Census Bureau, 2005-2007 American Community Survey 3-Year Estimates. Accessed on February 26, 2009 from <http://factfinder.census.gov>.
- <sup>8</sup> Commuting Patterns by County, Office of Policy, Research and Strategic Planning, Ohio Department of Development. Accessed on June 17, 2009 from <http://www.odod.state.oh.us/research/files/P0005.htm>.
- <sup>9</sup> Ohio Department of Education, 2007-2008 School Year Report Card, August 2008. Accessed on May 24, 2009 from <http://webapp2.ode.state.oh.us/reportcard/archives/Default.asp>.
- <sup>10</sup> 2008 Civilian Labor Force Estimates with Unemployment Rate Map, Ohio Department of Job and Family Services, Office of Workforce Development, Bureau of Labor Market Information, March 12, 2009. Accessed on June 4, 2009 from <http://lmi.state.oh.us/laus/laus.html>.
- <sup>11</sup> 2000 Educational Attainment, School Enrollment. U.S. Census Bureau, Census 2000 Summary File 3 (SF 3). Accessed on February 26, 2009 from <http://factfinder.census.gov>.
- <sup>12</sup> Taxable Value of Real Property by Class of Property and County, Calendar Year 2007, Ohio Department of Taxation, Accessed on June 3, 2008 from [http://tax.ohio.gov/divisions/tax\\_analysis/tax\\_data\\_series/tangible\\_personal\\_property/pd31/pd31cy07.stm](http://tax.ohio.gov/divisions/tax_analysis/tax_data_series/tangible_personal_property/pd31/pd31cy07.stm).
- <sup>13</sup> Pediatric Nutrition Surveillance Data from WIC Participants in 2005, Ohio Department of Health, Accessed on May 22, 2009 from <http://www.odh.ohio.gov/ASSETS/4698F5F01183460DAE7A79CE5B9D98AB/2002cty.pdf>.
- <sup>14</sup> A Report on Body Mass Index of Ohio's Third Graders 2004-2005, Ohio Department of Health Division of Family and Community Health Services, Accessed on May 22, 2009 from <http://healthyohioprogram.org/ASSETS/7FBDB7A5C3FB4977A430A1EA46C642D9/bmirept.pdf>.
- <sup>15</sup> US Census 2000, Summary File 3, Poverty Status in 1999 of Families by Family Type by Presence and Age of Related Children <18 Years, Accessed on 8/3/09.
- <sup>16</sup> Aggregate Kindergarten Readiness Assessment-Literacy (KRA-L) Data for Fall 2007 District Scores by County, Accessed on 8/3/09 from <http://education.ohio.gov/GD/DocumentManagement/DocumentDownload.aspx?DocumentID=50667>.