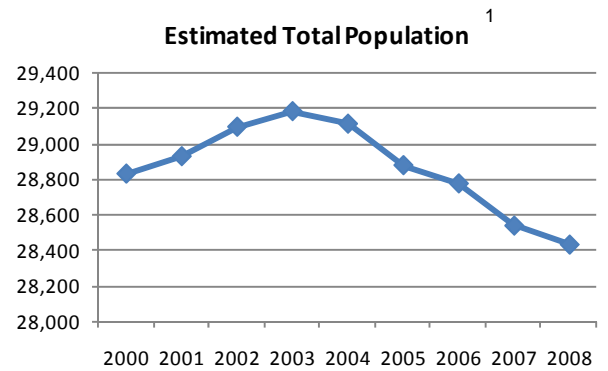


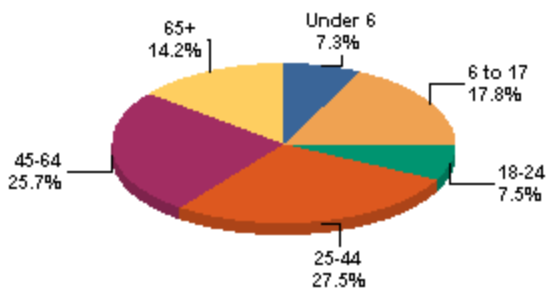


Population	2000 Census	2006 Estimate	2007 Estimate	Average Annual Rate of Change
Carroll County	28,836	28,777	28,516	-0.20%
Carrollton vill.	3,190	3,237	3,208	0.06%
Dellroy vill.	294	289	286	-0.38%
Leesville vill.	184	181	179	-0.38%
Magnolia vill.	314	318	317	0.13%
Malvern vill.	1,218	1,204	1,197	-0.24%
Minerva vill.	1,898	1,927	1,916	0.13%
Sherrodsville vill.	316	310	307	-0.40%
The remaining of Carroll County	21,422	21,311	21,106	-0.20%

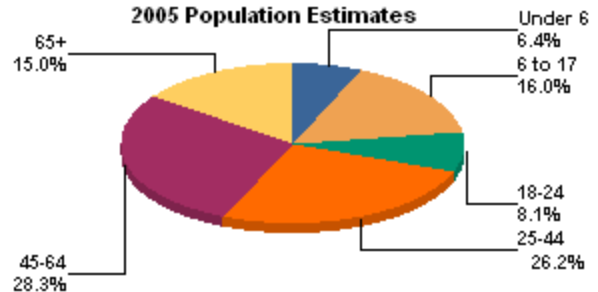
	Total Population	Population Under 5	Population 5-13	Population 14-17
1980 Census	25,598	Not Available		
1990 Census	26,521	Not Available		
2000 Census	28,836	1,731 6.0%	3,766 13.1%	1,755 6.1%
2001 Estimate	28,933	1,683 5.8%	3,684 12.7%	1,765 6.1%
2002 Estimate	29,098	1,699 5.8%	3,606 12.4%	1,769 6.1%
2003 Estimate	29,185	1,690 5.8%	3,558 12.2%	1,756 6.0%
2004 Estimate	29,115	1,659 5.7%	3,401 11.7%	1,784 6.1%
2005 Estimate	28,883	1,601 5.5%	3,300 11.4%	1,731 6.0%
2006 Estimate	28,781	1,594 5.5%	3,226 11.2%	1,691 5.9%
2007 Estimate	28,545	1,559 5.5%	3,175 11.1%	1,664 5.8%
2008 Estimate	28,439	1,562 5.5%	3,123 11.0%	1,578 5.5%



2000 Population Percent by Age



2005 Population Estimates



	2000 Census	2006 Estimate	2007 Estimate	Average Annual Rate of Change
Augusta twp	1,599	1,583	1,568	-0.27%
Brown twp	8,300	8,279.0	8,212	-0.15%
Center twp	4,412	4,438	4,398	-0.03%
East twp	859	853	844	-0.24%
Fox twp	1,075	1,064	1,054	-0.27%
Harrison twp	2,498	2,481	2,458	-0.22%
Lee twp	1,128	1,121	1,109	-0.23%
Loudon twp	1,032	1,020	1,009	-0.31%
Monroe twp	1,930	1,897	1,880	-0.31%
Orange twp	1,258	1,242	1,230	-0.31%
Perry twp	1,022	1,014	1,004	-0.24%
Rose twp	1,603	1,667	1,653	0.42%
Union twp	1,059	1,056	1,046	-0.26%
Washington twp	1,061	1,062	1,051	-0.18%

Income and Employment Support 2007⁴
Carroll County Ohio

Dependency Rate	22.7%	17.1%
Food Stamps	15.5%	14.7%
OWF cash assistance	2.0%	3.0%

Workforce Investment Act

Adult employment rate	100.0%	78.5%
Adult retention rate	100.0%	86.2%
Youth placement rate	50.0%	62.6%

Family Poverty and Employment¹⁵

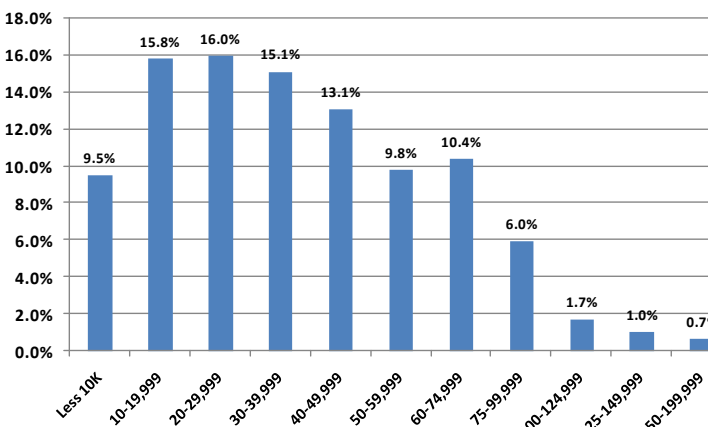
Poverty Status: Percent of total families in poverty (2000 Census)

Married Couples	49.6%
Male householder	10.7%
Female householder	39.7%

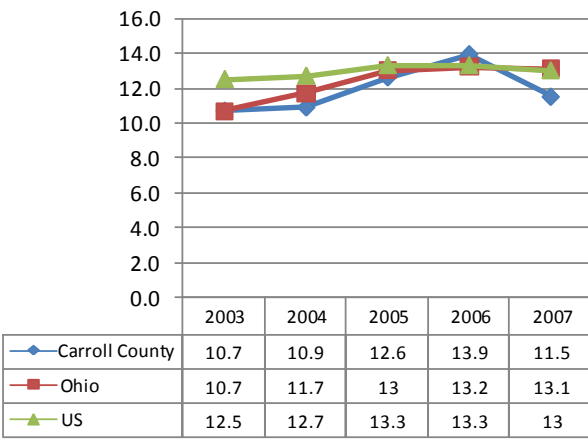
Poverty Status: Percent of total families in poverty (2000 Census)

Total Families	8,204	100%
Married couples, both in labor force	3,281	40.0%
Married couples, husband in labor force	1,721	21.0%
Married couples, wife in labor force	556	6.8%
Married couples not in labor force	1,392	17.0%
Male householder, in labor force	269	3.3%
Male householder not in labor force	122	1.5%
Female householder, in labor force	661	8.1%
Female householder not in labor force	202	2.5%

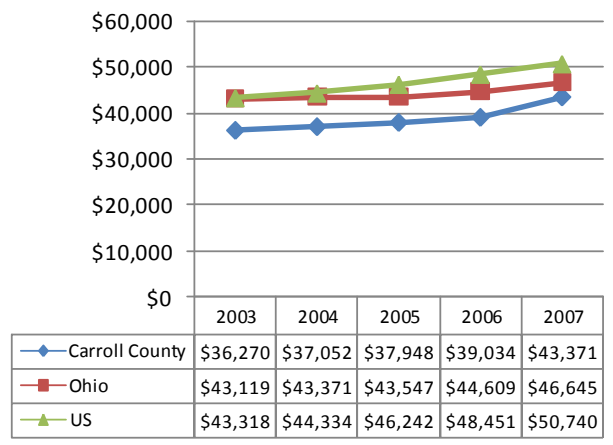
Percent of Population by Household Income³
2000 Census



Poverty Rate⁵



Median Household Income⁵



Housing Units (2000 Census) ⁶

Total Housing Units	11,126
Owner occupied	68.4%
Renter occupied	17.1%
Vacant	14.5%
Median gross income as percentage of household income	22.6%
Median monthly owner's cost for housing with a mortgage as a percentage of household income	20.4%

Educational Attainment ^{7, 11}	2000 Census Percent	2007 Estimates	2000 Census State	2000 Census National
Population 25 years and over	100.0%	100.0%	100.0%	100.0%
Less than 9th grade	5.7%	4.0%	4.5%	7.5%
9th to 12th grade	14.2%	11.0%	12.6%	12.1%
High school or equivalent	53.0%	54.0%	36.1%	28.6%
Some college, no degree	14.4%	15.3%	19.9%	21.0%
Associate's degree	3.5%	4.4%	5.9%	6.3%
Bachelor's degree	6.2%	7.1%	13.7%	15.5%
Graduate or professional degree	2.9%	4.2%	7.4%	8.9%

Total Housing Units ⁶			
Cities and Townships with Villages	2000 Census	2005 Census	2006 Estimate
Carroll Co	13,016	13,102	13,082
Augusta township	581	581	580
Brown township	3,614	3,635	3,632
Center township	2,003	2,034	2,033
East township	308	309	308
Fox township	446	446	445
Harrison township	980	983	981
Lee township	460	462	460
Loudon township	456	455	454
Monroe township	1,249	1,244	1,242
Orange township	726	724	723
Perry township	565	567	565
Rose township	635	666	665
Union township	608	608	607
Washington township	385	388	387

School Enrollment ^{7, 11}	2000 Census	2007 Estimate
Population 3 years and over enrolled in school	15,628	14,237
Nursery school, preschool	782	1,038
Kindergarten	841	597
Elementary school (grades 1-8)	7,306	5,871
High School (grades 9-12)	4,222	3,625
College or graduate school	2,477	3,106

Kindergarten Readiness Assessment-Literacy Scores-Fall 2007 ¹⁶

District Name	Count of Test Takers	Average Score	Percent Band 1 (Scores 0-13)	Percent Band 2 (Scores 14-23)	Percent Band 3 (Scores 24-29)
	fall 2007	2007			
Brown Local SD	58	19.3	27.6	25.9	46.6
Carrollton Ex Vill SD	143	19.9	16.8	49.0	34.3
State	122,786	19.7	21.8	40.6	37.6

Anemia Indicators Children Aged < 5 Years ¹³

	Number	Percent	Rank
Carroll County	645	8.70	29

Prevalence Of Overweight and At Risk Of Overweight Among Ohio Third Graders, 2004-5* ¹⁴			
Percent overweight and at risk of overweight		Percent overweight	
37.1%	(30.2-44.6)	16.4%	(9.3-27.3)

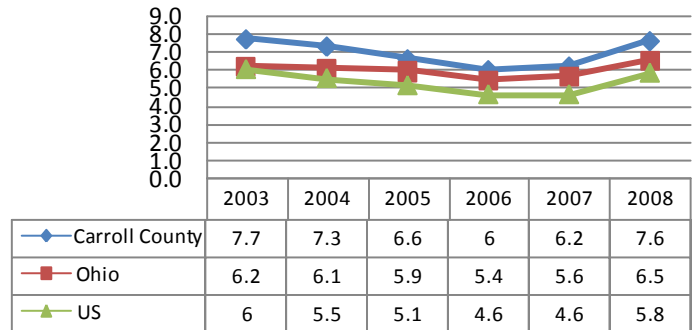
* Confidence Interval 95 percent

Childcare Services ⁴

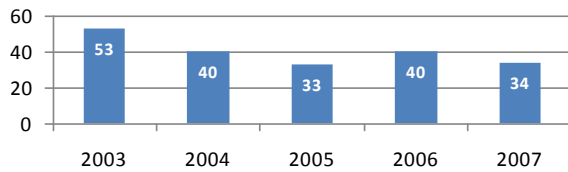
	2006	2007
Number of Children Using Publicly Funded Child Care (Unduplicated Count)	207	257
Public Funds Used for Child Care Expenditures	\$203,685	\$317,122
Annual Average Expenditures per Child	\$984	\$1,234
Childcare Providers		
Number of Licensed Child Care Centers	6	6

Major Employers by Industry ³	
Carrollton Exempted Village Bd of Ed	Govt
American Axle & Manufacturing Holding	Mfg
FormTech	
GBS Corporation	
Summitville Tiles Inc	
Atwood Lake Resort	Serv
Carroll Health Care Center Inc	

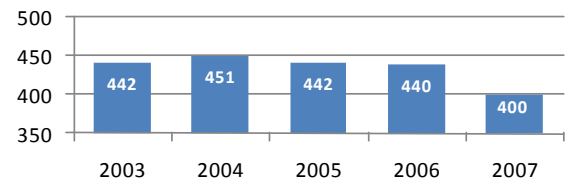
Unemployment Rate ^{3, 10}



Number of Business starts ³



Number of Active Businesses ³

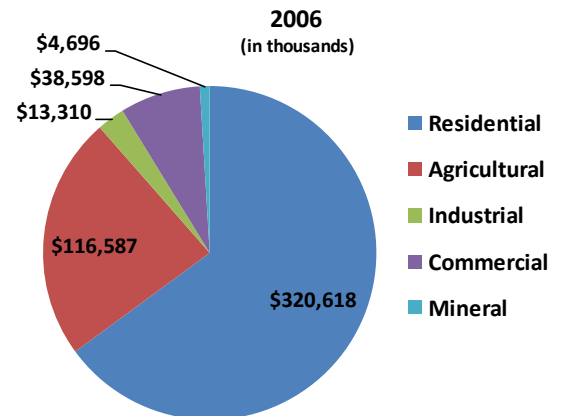


Number of workers 16+ years of age living in Carroll County			Number of workers 16+ years of age working in Carroll County		
12,882			7,947		
Commute Out To	Number	Percent	Commute In From	Number	Percent
Stark Co. OH	5,125	39.8%	Stark Co. OH	956	12.0%
Tuscarawas Co. OH	840	6.5%	Columbiana Co. OH	453	5.7%
Columbiana Co. OH	297	2.3%	Tuscarawas Co. OH	289	3.6%
Summit Co. OH	271	2.1%	Jefferson Co. OH	265	3.3%
Jefferson Co. OH	178	1.4%	Harrison Co. OH	188	2.4%
Harrison Co. OH	160	1.2%	Holmes Co. OH	76	1.0%
Cuyahoga Co. OH	73	0.6%	Mahoning Co. OH	44	0.6%
Wayne Co. OH	73	0.6%	Mercer Co. PA	16	0.2%
Mahoning Co. OH	47	0.4%	Clark Co. OH	13	0.2%
Portage Co. OH	37	0.3%	Geauga Co. OH	12	0.2%

Regional Commuting Patterns ⁸

Number of workers living in county	12,882
Number of workers working in county	7,947
Net worker flow	-4935
Percent who commute out	57.0%
Average commute time in minutes	27.5

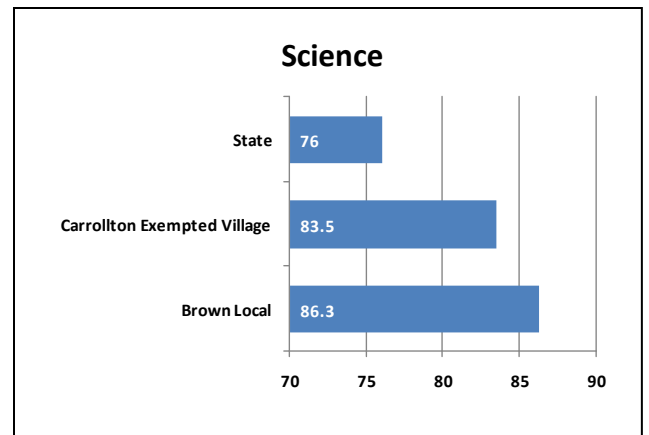
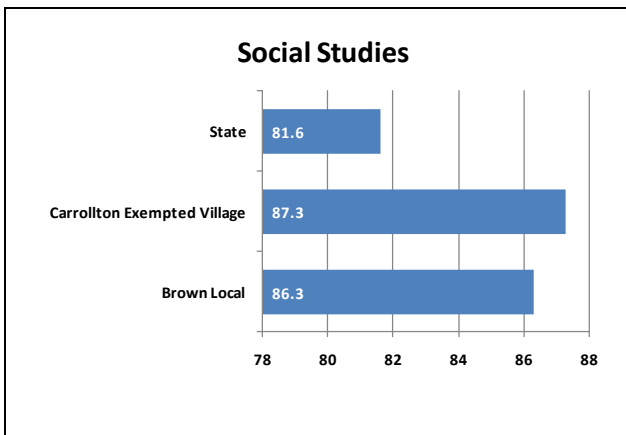
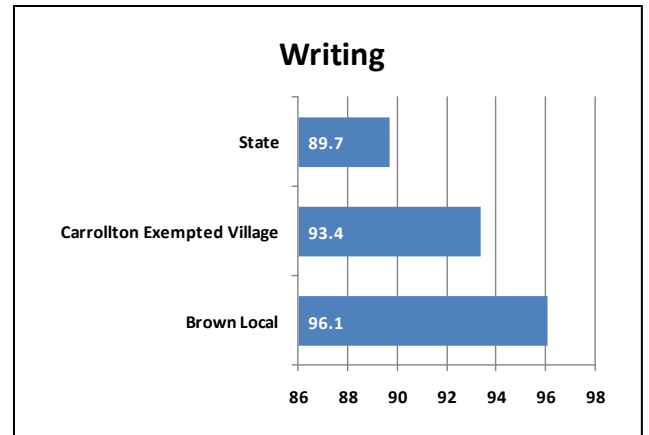
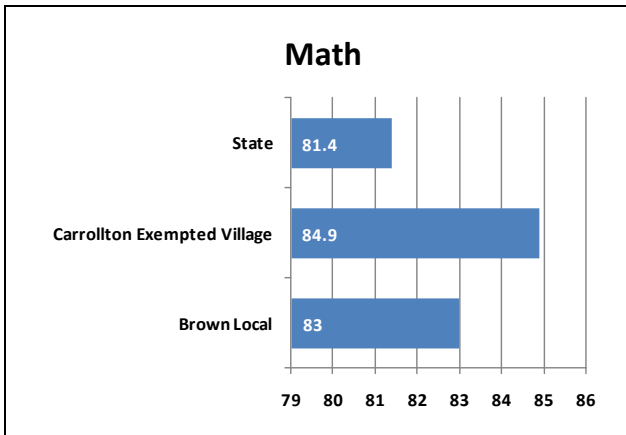
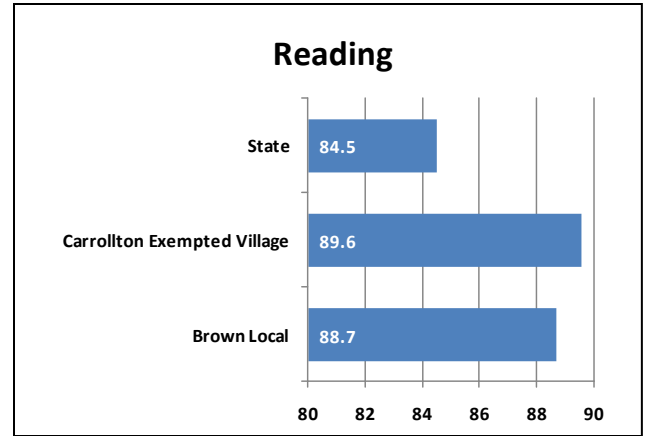
Taxable Value of Real Property ³



Employment by Industry ³

Industrial Sector	Number of Establishments		Average Employment	
	2006	Change since 2001	2006	Change since 2001
Private sector	473	4.9%	5,060	-8.9%
Goods-Producing	129	4.0%	1,766	-22.8%
Natural Resources and Mining	10	-16.7%	81	107.7%
Construction	79	14.5%	241	24.0%
Manufacturing	40	-7.0%	1,443	25.3%
Service-Providing	345	5.5%	3,295	0.9%
Trade, Transportation and Utilities	128	4.1%	1,316	4.9%
Information	6	-14.3%	43	-49.4%
Financial Services	30	7.1%	129	-27.5%
Professional and Business Services	48	11.6%	194	-21.8%
Education and Health Services	40	21.2%	733	19.2%
Leisure and Hospitality	52	2.0%	665	-3.1%
Other Services	43	4.9%	215	12.0%
Unclassified				
Federal Government			50	-9.1%
State Government			32	-3.0%
Local Government			1,044	15.7%

2008-2009 Ohio Graduation Test (OGT) ⁹
District Ranking
Percent of 10th Graders Proficient of Above



Data Sources:

- ¹ Annual Estimates of the Resident Population by Selected Age Groups and Sex for Counties: April 1, 2000 to July 1, 2008. U.S. Census Bureau. Accessed on May 29, 2009 from <http://www.census.gov/popest/counties/asrh/files/cc-est2008-agesex-39.csv>.
- ² 2007 Population Estimates by County, City Village and Township. Office of Policy, Research and Strategic Planning, Ohio Department of Development, July 2008. Accessed on June 16, 2009 from <http://www.odod.state.oh.us/research/>.
- ³ 2007 Ohio County Profiles, Office of Policy, Research and Strategic Planning, Ohio Department of Development, January 2009. Accessed on June 12, 2009 from <http://www.odod.state.oh.us/research>.
- ⁴ Ohio County Profiles, Ohio Department of Job and Family Services, July 2008. Accessed on June 4, 2009 from <http://jfs.ohio.gov/county>.
- ⁵ 2007 Poverty and Median Income Estimates – Counties. Census Bureau, Small Area Estimates Branch, Release date: 12.2008. Accessed on March 24, 2009 from <http://www.census.gov/did/www/saipe/data/statecounty/data/2007.html>
- ⁶ Estimated Housing Units for Ohio Places, County and County Subdivisions 2000-2006. Office of Policy, Research and Strategic Planning, Ohio Department of Development, September 2007. Accessed on May 26, 2009 from <http://www.odod.state.oh.us/research>.
- ⁷ 2007 Educational Attainment, School Enrollment. U.S. Census Bureau, 2005-2007 American Community Survey 3-Year Estimates. Accessed on February 26, 2009 from <http://factfinder.census.gov>.
- ⁸ Commuting Patterns by County, Office of Policy, Research and Strategic Planning, Ohio Department of Development. Accessed on June 17, 2009 from <http://www.odod.state.oh.us/research/files/P0005.htm>.
- ⁹ Ohio Department of Education, 2007-2008 School Year Report Card, August 2008. Accessed on May 24, 2009 from <http://webapp2.ode.state.oh.us/reportcard/archives/Default.asp>.
- ¹⁰ 2008 Civilian Labor Force Estimates with Unemployment Rate Map, Ohio Department of Job and Family Services, Office of Workforce Development, Bureau of Labor Market Information, March 12, 2009. Accessed on June 4, 2009 from <http://lmi.state.oh.us/laus/laus.html>.
- ¹¹ 2000 Educational Attainment, School Enrollment. U.S. Census Bureau, Census 2000 Summary File 3 (SF 3). Accessed on February 26, 2009 from <http://factfinder.census.gov>.
- ¹² Taxable Value of Real Property by Class of Property and County, Calendar Year 2007, Ohio Department of Taxation, Accessed on June 3, 2008 from http://tax.ohio.gov/divisions/tax_analysis/tax_data_series/tangible_personal_property/pd31/pd31cy07.stm.
- ¹³ Pediatric Nutrition Surveillance Data from WIC Participants in 2005, Ohio Department of Health, Accessed on May 22, 2009 from <http://www.odh.ohio.gov/ASSETS/4698F5F01183460DAE7A79CE5B9D98AB/2002cty.pdf>.
- ¹⁴ A Report on Body Mass Index of Ohio's Third Graders 2004-2005, Ohio Department of Health Division of Family and Community Health Services, Accessed on May 22, 2009 from <http://healthyohioprogram.org/ASSETS/7FBDB7A5C3FB4977A430A1EA46C642D9/bmirept.pdf>.
- ¹⁵ US Census 2000, Summary File 3, Poverty Status in 1999 of Families by Family Type by Presence and Age of Related Children <18 Years, Accessed on 8/3/09.
- ¹⁶ Aggregate Kindergarten Readiness Assessment-Literacy (KRA-L) Data for Fall 2007 District Scores by County, Accessed on 8/3/09 from <http://education.ohio.gov/GD/DocumentManagement/DocumentDownload.aspx?DocumentID=50667>.